



Personal Care



- Ambulatory
- Bath Safety
- Commodes



I•Class™ Brand

Personal Care Products

Invacare's best products. They provide the highest level of comfort, performance, features and value.



Bariatric Solutions™ Logo

Invacare's new Bariatric Solutions icon represents our commitment to providing bariatric solutions to our providers and clinicians, as well as their patients. Invacare achieves this through offering a breadth of the highest quality bariatric products. We also provide solutions by educating providers and clinicians on our products and the bariatric market as a whole. Invacare's products and programs improve the quality of life for patients. An uplifting and active presence is symbolized through our new bariatric icon, a presence which we at Invacare wish to convey to all our bariatric clients through our products and services.



Retail Packaging

Certain Personal Care Products are offered in attractive, consumer-oriented packaging. They can be displayed on pre-designed planograms to help build retail business and increase consumer awareness. Look for the Retail Packaging symbol within this catalog to easily identify these products.



Tool-Less Assembly Logo

Certain Personal Care Products do not require tools to assemble, to attach or detach prior and after use.



Latex Free Logo

Invacare's Personal Care Products represented in this catalog are manufactured by Invacare and/or their 3rd party suppliers with latex free components.

Invacare continues to take pride in improving the lives and increasing the freedom of all of your clients. Our products are designed with their unique needs in mind, and this collection of Personal Care Products is an outstanding example. This comprehensive range of reliable, high-quality products includes: transfer benches, toilet safety items, shower chairs, crutches and canes; bariatric/heavy-duty products to address the needs of the growing bariatric population; and new additions including our I-Fit™ and CareGuard™ Shower Chairs and Court-Side Glides™. It all adds up to the most comprehensive, exciting line of Personal Care Products we've ever offered. We're proud to make it possible for you to offer them to your clients.

Table of Contents

Ambulatory	
WalkLite™ Walker	3
Walkers	4 - 5
Court-Side Glides™	6
Walker Accessories	6 - 7
Walker Assistance Attachments	8
Rollite™ Rollators	9
Value-Line Rollators	10
Canes	11 - 12
Crutches and accessories	13 - 14
Bath Safety	
Transfer Benches	15
Shower Chairs	16 - 17
Aids to Daily Living	
Tub Bars	18
Grab Bars	18
Hand Showers	18
Raised Toilet Seats and Toilet Safety Frame	19
Commodes	
Commodes	20 - 23
Drop-Arm Commode	22
Commode Accessories	22
Mariner™ Rehab Shower Commode Chairs	23
Health Care Provider Merchandising Program	24

The Invacare® WalkLite™ Walker revolutionized the world of walkers by addressing the needs of providers, clinicians and consumers at an affordable price. The new line of walkers covers a wide range of consumer heights from Junior to Tall Adult. The new WalkLites will continue to feature all the benefits of the original WalkLite – a comfortable flip-up seat, durable front 5" fixed wheels, rear spring-loaded SureGlide™ brakes, a lightweight aluminum frame with flexible backrest and ergonomic dual-paddle folding mechanisms.



Model no. 6300-JRA
(Adult to Junior)



Model no. 6300-ATA
(Tall Adult)



Folds into a compact unit for storage. Built-in seat handle allows for easy transport.

Specifications

	6300-JRA	6300-ATA
Depth opened at base	23"	23"
Depth folded	7"	7"
Width inside handgrips	18"	18"
Width inside base of legs	20"	24.5"
Width overall	27"	27"
Height adjustment min.-max.	29.25" - 36.50"	32" - 39"
Approx. Client height* min.-max.	4'11" - 6'0"	5'5" - 6'5"
Seat-to-floor height min.-max.	16.625" - 23.625"	19" - 25.75"
Seat width x depth	17" x 9.50"	17" x 9.50"
Wheels	5" fixed	5" fixed
Product weight	11 lb.	11 lb.
Weight capacity	300 lb.	300 lb.
Quantity	1 per carton	1 per carton
Limited warranty - frame	lifetime	lifetime
Limited warranty - other components	1 year	1 year

*Client height is approximation. Each individual should always consult with his/her physician or therapist to determine proper adjustment.



Flip-up seat allows user to step inside the frame.



Rear spring-loaded SureGlide brakes provide additional security when seated.**

** The rear SureGlide brakes' engagement may vary depending upon the weight distributed on the seat and the positioning of the user on the seat.

Features

- Lightweight aluminum frame
- Flip-up seat with built-in handle
- Ergonomic dual-paddle folding mechanisms
- Folds into a compact unit for storage and transport
- Flexible backrest for comfort
- Rear spring-loaded SureGlide brakes
- Adjustable seat-to-floor height



Basket and Tray Accessories

Model no. Basket: 65109, 65110 (shown), Tray: 65408

- Basket (model no. 65110 for 6300-ATA; 65109 for 6300-JRA)
 - 10 lb. weight capacity
 - Position basket underneath seat to secure valuables
- Tray (model no. 65408)
 - For food and beverage placement
 - Tray fits on both 6300-JRA and 6300-ATA

Invacare contemporary walkers feature wide, deep frames with a large number of height adjustments and a lower side brace for added stability. They are light and easy to lift and maneuver. Walkers include PVC handgrips that provide comfort and long-lasting wear and anti-rattle silencers for quiet operation.



Invacare® I•Class™ Paddle Walkers

Model no. 6291-A - Dual-Release Paddle Adult (shown)
 Model no. 6291-1 - Dual-Release Paddle Adult
 Model no. 6291-JR - Dual-Release Paddle Junior



NEW

Invacare® Wheeled Walkers

Model no. 6291-3F - Dual-Release Paddle Adult
 Model no. 6291-5F - Dual-Release Paddle Adult
 Model no. 6291-JR3F - Dual-Release Paddle Junior
 Model no. 6285-3F - Single-Release Adult (shown)
 Model no. 6240-5F - Dual Blue-Release Adult Walker
 Model no. 6240-JR5F - Dual Blue-Release Junior Walker



NEW

Invacare® Single-Release Walkers

Model no. 6285-A Single-Release Adult
 Model no. 6285-JR Single-Release Junior

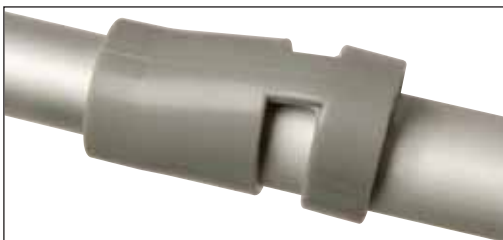
Invacare® Folding Mechanisms

Our folding mechanisms make it easy to open and close the walkers, even from a seated position. Walkers fold easily for transport or storage.



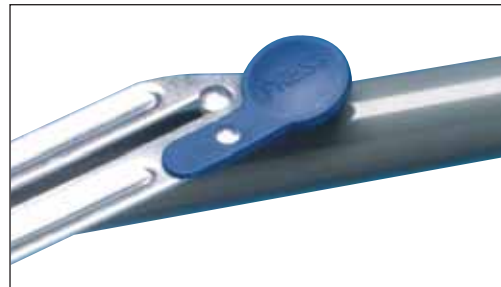
Dual-Release Paddle

- Ergonomic paddles “pop up” when walker is opened
- Nylon paddles are resistant to cracking or shattering



Single-Release Button

- One button to press for folding
- Button provides both visual and audible “locked” cues



Dual-Release Button

- Dual Blue-Release™ buttons provide both visual and audible “locked” cues



NEW

Invacare® Blue-Release™ Walkers

Model no. 6240-A - Dual Blue-Release Adult
Model no. 6240-JR - Dual Blue-Release Junior



Invacare® Heavy-Duty Paddle Walker

Model no. 6291-HDA - Heavy-Duty Dual-Release Paddle Adult

- Compatible with most Invacare leg accessories



Invacare® Adult Hemi Walker/Sidestepper

Model no. 6252 - Hemi Walker

- Wider base provides more stability than a quad cane
- 14 3/4" x 17 3/4" width at high height setting
- 12 1/4" x 16 1/2" width at low height setting

Specifications

Model no.		Width inside hand-grips	Width inside base legs	Depth opened at base	Depth folded	Height adjustment min. - max.	*Approx. client height min. - max.	Product weight	Weight capacity	Units/ carton	Limited warranty
6291-A (4) ; 6291-1	Dual-Release Paddle Adult	17"	21 1/2"	17 1/2"	4"	30 3/8" - 37 3/8"	5'3" - 6'4"	5 lb. 5 oz.	300 lb.	4	lifetime
6291-JR	Dual-Release Paddle Junior	17"	20 1/2"	16 1/2"	4"	25 3/8" - 32 3/8"	4'4" - 5'7"	5 lb. 1 oz.	300 lb.	4	lifetime
6291-HDA	Heavy-duty Dual-Release Paddle Adult	20"	24"	17 1/2"	4"	30 3/8" - 37 3/8"	5'3" - 6'4"	6 lb. 11 oz.	500 lb.	2	lifetime
6240-A	Dual Blue-Release Adult	17"	21"	16"	4"	32" - 39"	5'4" - 6'6"	5 lb. 7 oz.	300 lb.	4	1 year
6240-5F	Wheeled Dual Blue-Release Adult	17"	21"	18 1/2"	4"	32" - 39"	5'4" - 6'6"	6 lb. 6 oz.	300 lb.	4	1 year
6240-JR	Dual Blue-Release Junior	17"	20"	16"	4"	25" - 32"	4'4" - 5'7"	5 lb. 5 oz.	300 lb.	4	1 year
6240-JR5F	Wheeled Dual Blue-Release Junior	17"	20"	18"	4"	25" - 32"	4'4" - 5'7"	6 lb. 12 oz.	300 lb.	4	1 year
6285-A	Single-Release Adult	17 3/4"	19 1/2"	17 1/2"	4"	32" - 39"	5'4" - 6'6"	5 lb. 2 oz.	300 lb.	4	1 year
6285-JR	Single-Release Junior	17"	20"	16"	4"	25" - 32"	4'4" - 5'7"	4 lb. 8 oz.	300 lb.	4	1 year
6291-3F	Wheeled Dual-Release Paddle Adult	17"	21 1/4"	17 1/2"	4 1/2"	32" - 38"	5'4" - 6'4"	5 lb. 5 oz.	300 lb.	4	lifetime
6291-5F**	Wheeled Dual-Release Paddle Adult	17"	21 1/2"	17 1/2"	4 1/2"	33" - 39"	5'6" - 6'6"	5 lb. 6 oz.	300 lb.	4	lifetime
6291-JR3F	Wheeled Dual-Release Paddle Junior	17"	20 1/4"	16 1/2"	4 1/2"	27" - 33"	4'6" - 5'6"	5 lb. 1 oz.	300 lb.	4	lifetime
6285-3F	Wheeled Single-Release Adult	17 3/4"	19 1/2"	18 1/2"	4"	32" - 39"	5'4" - 6'6"	5 lb. 5 oz.	300 lb.	4	1 year
6252	Hemi Walker Adult	n/a	n/a	n/a	3"	29 1/2" - 34 1/2"	5'1" - 5'10"	2 lb. 14 oz.	250 lb.	2	3 years

*All client height ranges are approximations. Each individual should always consult with his/her physician or therapist to determine proper adjustment and usage.

"F" designation in Model no.: 3" or 5" fixed wheels with glide tips. ** With 13" rear leg extensions.



Invacare's Court-Side Glides™ give consumers a durable walker glide tip that is long-lasting, safe and easy to install, and provides a smooth glide experience. Consumers can install their Court-Sides Glides in seconds on Invacare® fixed-wheeled walkers and WalkLites™.* The Court-Side Glides feature a specially designed housing that allows the ball to rotate so it lasts longer. The Court-Side Glides have spring-loaded brakes for additional security and lock-out clips for pure gliding. The tennis balls pop in and out for quick and effortless replacement.

*Court-Side Glides change the Approximate Client Height Range of Walkers (see table)
Do not use on Model No. 6291 HDA

Client-Walker Height Range Table

Walker Model No.†	New Approx. Client Height Range w/Court-Side Glides‡
6291, 6240, 6285 w/ 5" fixed wheels	5'6" to 6'4"
6291, 6240, 6285 w/ 3" fixed wheels	5'4" to 6'4"
6291JR, 6240JR, 6285JR w/ 5" fixed wheels	4'8" to 5'6"
6291JR, 6240JR, 6285JR w/ 3" fixed wheels	4'6" to 5'6"
6300-JRA Adult to Junior WalkLite	4'11" to 5'6"
6300-ATA Tall Adult WalkLite	5'4" to 6'0"

† All client height ranges are approximations. Do not use on 6291HDA

Model No. 6290: Sold as a carton; 6 pairs per carton. Each pair complete with aluminum leg extensions, housings, and tennis balls.



Invacare® Walker Accessories

Invacare® walker accessories enhance walkers for safety, maneuverability and durability. Wheel rims are made of durable, easy-to-clean polypropylene; tires are made of non-marring thermoplastic rubber; wheels and bearings are corrosion protected.

Swivel Wheel Attachments



5" Swivel Wheels with 13" Cambered SureGlide™ Brakes

Model no. 6268



5" Swivel Wheel Attachments with Rear Glide Tips

Model no. 6267



3" Swivel Wheels with 13" Cambered SureGlide™ Brakes

Model no. 6272



3" Swivel Wheel Attachments with Rear Glide Tips

Model no. 6273

Fixed-Wheel Attachments



3" Single Fixed-Wheel Attachments with Rear Glide Tips

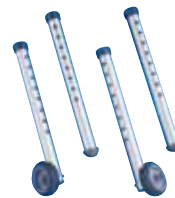
Model no. 6270**



5" Single Fixed Wheel Attachments with Rear Glide Tips

Model no. 6271**

- Use 13" rear leg extensions for maximum adjustability



Tall 3" Single Fixed-Wheel Attachments with Tall Rear Legs and Glide Tips

Model no. 6278 with 13" rear leg extensions

- Adjusts to accommodate persons up to 6'6" tall

**Also available in retail packaging with a minimum purchase of 4 sets. Order as Model nos. 6270-4 and 6271-4.

Rear Brake Attachments

Brake attachments operate without interfering with regular walking motion.



10" Rear Wheel Brakes

Model no. 6264

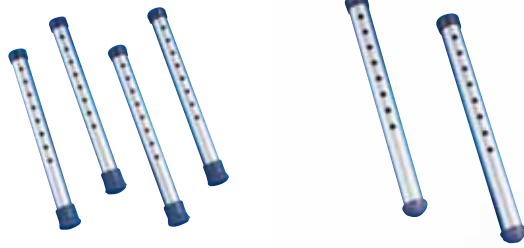
- Use with 3" or 5" single fixed-wheel attachments

13" Rear Wheel Brakes

Model no. 6265 (not shown)

- Use with 3" or 5" swivel wheel attachments or tall 3" single fixed-wheel attachments

Leg Extensions



Tall Leg Extensions

Model no. 6275

- Adjusts to accommodate persons up to 6'6" tall

13" Rear Leg Extensions with Glide Tips

Model no. 6266

- Use with swivel or fixed wheels



Glide Tips

Model no. 6280

- Packaged 24 per carton
- Durable construction for long wear

Walker Accessory Specifications*

*Walker accessories are not to be used with WalkLite™ Walker.

Model no.		Height adjustment		
		Adult walkers 6291-1, 6291-3F, 6285-3F, 6291-5F, 6291-A, 6285-A, 6240-A, 6291-HDA min. - max.	Junior walkers 6291-JR, 6285-JR, 6291-JR3F, 6240-JR min. - max.	Limited warranty
Fixed-wheel				
6270	3" single fixed-wheels w/rear glide tips	31" - 37"	26" - 32"	lifetime
6271	5" single fixed-wheels w/rear glide tips	33" - 39"	28" - 33"	lifetime
6277	tall 3" single fixed-wheels w/glide tips	31" - 37"	26" - 32"	lifetime
6278	tall 3" single fixed-wheels w/tall rear leg ext. w/glide tips	33" - 40"	31" - 35"	lifetime
Swivel wheel				
6267	5" swivel wheels w/rear glide tips	37" - 40"	32" - 35"	lifetime
6268	5" swivel wheels w/13" cambered SureGlide™ brakes	37" - 40"	32" - 35"	lifetime
6269	3" swivel wheels w/13" rear leg extensions w/glide tips	34" - 40"	29" - 35"	lifetime
6272	3" swivel wheels w/13" cambered SureGlide brakes	34" - 40"	29" - 35"	lifetime
6273	3" swivel wheels w/rear glide tips	34" - 37"	29" - 32"	lifetime
Leg extensions				
6266	13" rear leg extensions w/glide tips	33" - 40"	29" - 35"	lifetime
6275	tall front and rear leg extensions	33" - 40"	28" - 35"	lifetime
Rear brake attachments				
6264	10" rear wheel brakes	33" - 37"	28" - 32"	lifetime
6265**	13" rear wheel brakes	33" - 40"	29" - 35"	lifetime

**For use with 3" or 5" swivel wheels or tall 3" fixed wheels.

The Invacare Walker Platform attachment is now even easier to attach and detach. Invacare makes a good product even better with a 2" clamp-on and tighten feature that does not require tools to assemble. Clamp-on feature also helps with ease of adjustment when determining correct height.

Platform Attachment

Model no. 6027
(Not to be used with model nos. 6291-HDA, 6252, 6300-JRA, 6300-ATA)

- Easy tool-free installation
- For adult and junior walkers
- Thick, vinyl-covered pad with heavy-duty Velcro® strap
- 300 lb. weight capacity
- One per carton
- Lifetime limited warranty



Assistance Attachments

All attachments mount easily to most Invacare® walkers.



Walker Basket

Model no. 6098
(Not to be used with model nos. 6291-HDA, 6252, 6300-JRA, 6300-ATA, 6240 walkers, 6285 walkers)

- Mounts easily with snap hooks
- Rust-resistant, gray vinyl coating
- Basket can be installed on the inside or outside of the walker
- 5 lb. weight capacity
- One per carton
- Lifetime limited warranty



Walker Tray

Model no. 6007
(Not to be used with model nos. 6291-HDA, 6252, 6300-JRA, 6300-ATA)

- Provides convenient assistance for a variety of everyday activities
- Molded with details for cups and pen holders
- Folds out of the way when not in use
- 5 lb. weight capacity
- One per carton
- One year limited warranty



Walker Pouch

Model no. 6015-4
(Not to be used with model nos. 6291-HDA, 6252, 6300-JRA, 6300-ATA, 6240 walkers, 6285 walkers)

- Made of forest green/deep sea blue denier nylon
- Inside and outside pockets
- Easily attaches over front crossbar
- Lightweight and water-repellent
- 5 lb. weight capacity
- Four per carton
- One year limited warranty

The Invacare line of Rollite™ Rollators is unlike any other in the industry. Invacare has taken the Rollite one step further, offering the sizes, wheel types, and colors that providers have been looking for. The Rollite line offers adult and junior sizes in different colors. For improved mobility over rougher terrain, large 8" wheel models are available in adult and tall sizes (Midnight Blue color). Along with additional features, the Rollite line provides the comfort, durability and quality that consumers have come to expect from Invacare products.

Basket and Tray Accessories

- Basket (model no. 65110). For use on Rollite models 65100, 65100R and 68100-TA
- Tray (model no. 65408)
 - For food and beverage placement
 - For use on all Rollite models
- Basket (model no. 65109). For use on Rollite models 65100-JR, 65100R-JR and 68100
 - 10 lb. weight capacity
 - Position basket underneath seat to secure valuables

Features

- Lightweight aluminum frame
- Flip-up seat with built-in handle
- Ergonomic dual-paddle folding mechanism
- Folds into a compact unit for storage and transport
- Flexible backrest for comfort
- Ergonomic handbrakes lock the rear wheels for security
- Adjustable seat-to-floor height



Color: Midnight Blue.
Model nos. 68100 Rollite Adult w/8" wheels,
68100-TA Rollite Tall Adult w/8" wheels (Shown).



Color: Electric Red.
Model nos. 65100R Rollite Adult,
65100R-JR Rollite Junior (shown)



Color: Midnight Blue.
Model nos. 65100 Rollite Adult (Shown)
65100-JR Rollite Junior



Folds into a compact unit for storage. Built-in seat handle allows for easy transport.

Specifications

	65100 Rollite Adult (Midnight Blue)	65100-JR Rollite Junior (Midnight Blue)	65100R Rollite Adult (Electric Red)	65100R-JR Rollite Junior (Electric Red)	68100 Rollite Adult w/8" wheels (Midnight Blue)	68100-TA Rollite Tall Adult w/8" wheels (Midnight Blue)
Depth opened at base	24"	24"	24"	24"	26"	26"
Depth folded	7"	7"	7"	7"	7"	7"
Width inside handgrips	18"	18"	18"	18"	18"	18"
Width inside base of legs	22"	22"	22"	22"	22"	22"
Width overall	27"	27"	27"	27"	27"	27"
Height adjustment min.-max.	32"-36"	29"-33"	32"-36"	29"-33"	32"-36"	35"-39"
*Approx. client height min.-max.	5'4"-6'	4'11"-5'7"	5'4"-6'	4'11"-5'7"	5'4"-6'	5'11"-6'6"
Seat-to-floor height min.-max.	19"-23"	16½"-20½"	19"-23"	16½"-20½"	19½"-23½"	22"-26"
Seat width x depth	17" x 9½"	17" x 9½"	17" x 9½"	17" x 9½"	17" x 9½"	17" x 9½"
Wheels	5"	5"	5"	5"	8"	8"
Product weight	13½ lb.	13½ lb.	13½ lb.	13½ lb.	16½ lb.	16½ lb.
Weight capacity	300 lb.	300 lb.	300 lb.	300 lb.	300 lb.	300 lb.
Quantity	1 per ctn.	1 per ctn.	1 per ctn.	1 per ctn.	1 per ctn.	1 per ctn.
Limited warranty						
frame	lifetime	lifetime	lifetime	lifetime	lifetime	lifetime
brakes	6 years	6 years	6 years	6 years	6 years	6 years
other components	1 year	1 year	1 year	1 year	1 year	1 year

*Client height is approximation. Each individual should always consult with his/her physician or therapist to determine proper adjustment.

Invacare® Value-Line Rollators offer the perfect blend of style, comfort and affordability. These rollators feature easy-to-operate ergonomic hand brakes, comfortable seats and easy folding for storage and transport. They offer great maneuverability and stability, and are height adjustable for a custom fit. A basket is standard on model nos. 65410, 65750, 65450, 65650 and 65850. Tray is standard on model nos. 65410 and 65450.

STYLE — COMFORT — VALUE



Model no. 65410



Model no. 65750



Model no. 65450



Model no. 65650



Model no. 65850

The Value-Line Has Arrived

65410 Features

- Easy-to-operate, ergonomic hand brakes
- Rollator folds easily with tote bag attached
- Indoor/outdoor 8" x 2" solid rubber wheels
- Basket standard, attaches easily to the frame
- Tray standard, attaches easily to the basket
- Tote bag standard, attaches easily to the frame

65750 Features

- Lightweight aluminum frame
- Push-down brakes lock when user is in a seated position
- Flip-up padded seat with zipper compartment for storage of valuables
- Rollator folds easily with basket attached
- Removable foam padded straight backrest enhances comfort and can be easily removed
- Universal basket, fits underneath seat or hooks easily on front seat brace

65450 Features

- Easy-to-operate, ergonomic hand brakes lock the rear wheels for security
- Sturdy seat
- Rollator folds easily with basket attached
- Basket and tray standard

65650 Features

- Easy-to-operate, ergonomic hand brakes lock the rear wheels for security
- Flip-up padded seat with zipper compartment for storage of valuables
- Lightweight aluminum frame
- Rollator folds easily with basket attached
- Removable foam padded curved backrest enhances comfort and can be easily removed
- Universal basket, fits underneath seat or hooks easily on front seat brace

65850 Features

- Easy-to-operate, ergonomic hand brakes lock the rear wheels for security
- Flip-up padded seat with zipper compartment for storage of valuables
- Lightweight aluminum frame
- Rollator folds easily with basket attached
- Removable foam padded straight backrest enhances comfort and can be easily removed
- Universal basket, fits underneath seat or hooks easily on front seat brace

Specifications

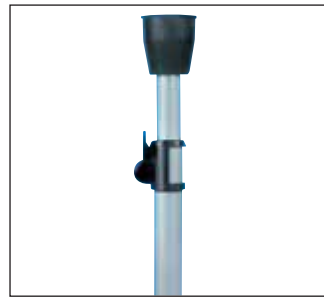
	65410	65410 Tote bag	65750	65450	65650	65850
Depth opened	22.85"	14.18"	22.64"	26.50"	28.28"	25.02"
Width opened	26"	14.18"	23"	23.75"	24.25"	25"
Length		10.65"				
Adjustable handle height min.-max.	31.52" - 36.24"		31.79" - 36.71"	31.375" - 38.875"	32.68" - 37.32"	34.45" - 39.37"
Approximate client height min.-max.	5' 3" - 6'		5' 4" - 6' 1"	5' 3" - 6' 5"	5' 5" - 6' 2"	5' 11" - 6' 6"
Distance between handles	14"		18"	14.75"	18"	18"
Wheels	8" x 2" TPR		5"	7.5"	7.5"	8"
Seat width x depth	N/A		13.75" x 12.50"	15" x 6.375"	13.75" x 12.50"	13.75" x 12.50"
Seat-to-floor height	N/A		21.16"	24.375"	23.23"	24.61"
Product weight	17 lb.		15 lb.	25 lb.	19 lb.	18 lb.
Weight capacity	264 lb.	11 lb.	250 lb.	300 lb.	300 lb.	300 lb.
Limited warranty		1 year				
frame	3 years		3 years	3 years	3 years	3 years
other components	1 year		1 year	1 year	1 year	1 year
Quantity	1 per carton	standard on 65410	1 per carton	1 per carton	1 per carton	1 per carton

From standard crook to folding, Invacare offers a stylish and unique line of canes. With a wide assortment of handgrip styles, you can fit virtually any of your clients with ease.



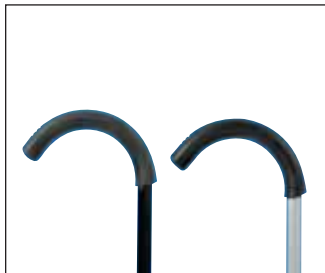
The Invacare® Grip

- Our familiar triangular-shaped grip. The flat top helps reduce the stress a user's hand may experience through everyday cane use.



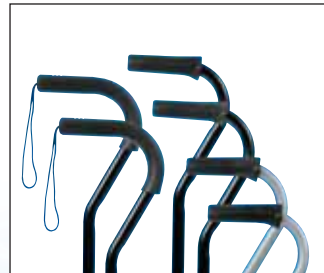
Cane Tip and Collar

- Locking adjustment collar secures cane at desired length. Tip features reinforced metal insert for longer wear.



Invacare® Standard Crook Canes

Invacare Grip
 Model no. 40915-6 – Silver
 Model no. 8916 – Black



Invacare® Offset Variety Pack of Six

Model no. 8964 (2 of each item)
 Black with Invacare Grip with Strap
 Black with Dual-Cam Grip
 Silver with Dual-Cam Grip



Invacare® Offset Canes

Invacare Grip with Strap
 Model no. 8917 – Silver
 Model no. 40918-6 – Black



Invacare® Adjustable Folding Cane

Model no. 40800-6

- Folds to a compact 11"

Specifications

Model no.	Style	Color	Grip type	Adjustment	*Client height (approx.)	Weight	Weight capacity	Units/carton	Limited warranty
40915-6	crook	silver	Invacare	30" - 39"	4'6" - 6'6"	15 oz.	250 lb.	6	lifetime
8916	crook	black	Invacare	30" - 39"	4'6" - 6'6"	15 oz.	250 lb.	6	lifetime
8917	offset	silver	Invacare	29" - 38"	4'4" - 6'4"	15 oz.	250 lb.	6	lifetime
40918-6	offset	black	Invacare	29" - 38"	4'4" - 6'4"	15 oz.	250 lb.	6	lifetime
40800-6	folding	black	contour	33" - 37"	4'8" - 6'4"	15 oz.	250 lb.	6	lifetime

*All client height ranges are approximations. Each individual should always consult with his/her physician or therapist to determine proper adjustment and usage.

Quad Canes

Our quad canes come in small, medium and large base varieties, have a 250-pound weight capacity, and allow for proper fit with right- or left-hand use.



Invacare® CareGuard™ Small Base Quad Canes

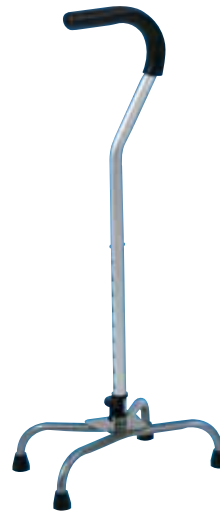
Model no. 7821 - Invacare Grip

- 5th center tip for added stability



Medium Base Quad Canes

Model no. 3920-2 - Invacare Grip



Large Base Quad Canes

Model no. 7827 - Invacare Grip



Invacare® Orthopedic Grip Canes

Model no. 8929 – Black (Right Hand)

- Our unique orthopedic grip is ergonomically shaped to spread pressure evenly across the palm

Quad Canes Specifications

Model no.	Base	Color	Grip type	Adjustment	Footprint	Weight	Weight capacity	Units/ carton	Limited warranty
7821	small	silver	Invacare	29 ¼" - 38 ¼"	8" x 6"	1 lb. 9 oz.	250 lb.	2	lifetime
3920-2	medium	silver-vein finish	Invacare	29 ¼" - 38 ¼"	10 ¼" x 6"	1 lb. 13 oz.	250 lb.	2	lifetime
7827	large	silver-vein finish	Invacare	29 ¼" - 38 ½"	13" x 7 ¾"	2 lb. 10 oz.	250 lb.	2	lifetime

Orthopedic Grip Canes Specifications

Our unique orthopedic grip is ergonomically shaped to spread pressure evenly across the palm

Model no.	Handle style	Color	Adjustment	height* (approx.)	Weight	Weight capacity	Units/ carton	Limited warranty
8929	orthopedic (right)	black	31" - 40"	4'6" - 6'6"	15 oz.	250 lb.	6	3 years

*Client height is approximation. Each individual should always consult with his/her physician or therapist to determine proper adjustment.



Invacare® Wooden Cane

Model no. 40802-3

- Available in a classic design, our wooden cane is constructed of traditional hardwood that is urethane-coated, giving it a chip- and mar-resistant finish for long-lasting durability
- 6'5" maximum user height



Cane Tips

Model nos. 40850-4, 40851-4, 40852-4, 40853-4

- Each pair of cane tips is retail-packaged

Specifications

Model no.	Units/ carton	Fits cane diameter
40850-4	8	1"
40851-4	8	¾"
40852-4	8	¾"
40853-4	8	½"

Specifications

Model no.	Hardwood	Weight	Weight capacity	Units/ carton	Limited warranty
40802-3	walnut	14 oz.	250 lb.	3	lifetime

Crutches

Invacare’s line of Crutches provides support, strength and comfort for consumers. Crutches range in sizes from junior to tall adult, allowing a custom fit for a wide variety of consumers.



Invacare® Bariatric Crutches

Model nos. 8130-J, 8130-A, 8130-T

Strong and comfortable, Invacare’s bariatric crutches range in size from junior to tall adult. Large, double push buttons allow for height adjustments in 1" increments. Crutch frame offers durable steel construction.

Features

- 1000 lb. weight capacity
- Push-button height adjustment
- Patient height guide on crutch for easy adjustment
- Contoured underarm design
- Arm pads (model no. 7131), handgrips (model no. 7126) and 2" crutch tips (model no. 6135) also available as accessories

Bariatric Crutch Specifications

Model no.	Size	*Approximate client height	Adjustment range	Weight per crutch	Weight capacity	Units/carton	Limited warranty
8130-J	junior	4'6" - 5'2"	36" - 44"	3 lb. 13 oz.	1000 lb.	1 pair	3 years
8130-A	adult	5'2" - 5'10"	44" - 52"	4 lb. 6 oz.	1000 lb.	1 pair	3 years
8130-T	tall adult	5'10" - 6'6"	52" - 60"	5 lb.	1000 lb.	1 pair	3 years

*Client height is approximation. Each individual should always consult with his/her physician or therapist to determine proper adjustment.

Invacare® Bariatric Crutch Accessories For Model No. 8130 Crutches



Model no. 6135

Rubber Tips

- Extra large, 2" outside diameter (O.D.) base



Model no. 7131

Arm Pads

- Contoured underarm design



Model no. 7126

Handgrips

- Solid handgrips



NEW 350 lb. Weight Capacity



Push handle lock for quick handgrip adjustment.



Invacare® Quick-Change Crutches

Model no. 8115-J – Junior
Model no. 8115-A – Adult
Model no. 8115-T – Tall Adult

Invacare quick-change crutches offer a solid one-piece crutch frame in lightweight anodized aluminum with push-button height adjustment and contoured handgrips.

Invacare® Quick-Adjust Crutches

Model no. 8120-J – Junior
Model no. 8120-A – Adult
Model no. 8120-T – Tall Adult

The one-piece handgrip assembly eliminates the need for wing nuts and other assembly pieces. Plus, the push-button height adjustment and patient height guide allow the crutch to be fitted to the proper user height. This patented model comes completely assembled for the consumer's convenience.

Invacare® Forearm Crutches

Model no. 6153 – Adult

Forearm crutches feature vinyl-coated 1-inch solid aluminum cuffs, cushioned vinyl handgrips and extra large crutch tips.

Quick-Change/Quick-Adjust Crutch Specifications

Model no.	Size	*Approximate client height	Adjustment range	Weight per pair	Weight capacity	Units/carton	Limited warranty
8115-J	junior	4'6" - 5'2"	36" - 44"	3 lb. 4 oz.	350 lb.	8 pairs	3 years
8115-A	adult	5'2" - 5'10"	44" - 52"	3 lb. 8 oz.	350 lb.	8 pairs	3 years
8115-T	tall adult	5'10" - 6'6"	52" - 60"	3 lb. 10 oz.	350 lb.	8 pairs	3 years
8120-J	junior	4'6" - 5'2"	36" - 44"	3 lb. 7 oz.	250 lb.	8 pairs	3 years
8120-A	adult	5'2" - 5'10"	44" - 52"	3 lb. 11 oz.	250 lb.	8 pairs	3 years
8120-T	tall adult	5'10" - 6'6"	52" - 60"	4 lb.	250 lb.	8 pairs	3 years

*All client height ranges are approximations. Each individual should always consult with his/her physician or therapist to determine proper adjustment and usage.

Forearm Crutch Specifications

Model no.	Size	*Approximate client height	Height adj. to center of handle	Top of cuff to center of handle	Weight per pair	Weight capacity	Units/carton	Limited warranty
6153	adult	5'0" - 6'2"	28" - 37"	9 1/2" - 11"	4 lb. 8 oz.	300 lb.	6 pairs	3 years

*All client height ranges are approximations. Each individual should always consult with his/her physician or therapist to determine proper adjustment and usage.

Invacare® Crutch Accessories for Model No. 8115 and 8120 Crutches

Model nos. 6134, 6135



Rubber Tips

Model no. 6134
Rubber Tips – Large 1 3/4" O.D. Base
Model no. 6135
Rubber Tips – Extra Large 2" O.D. Base

- Help grip the surface and absorb shock
- Reinforced with metal inserts for longer-lasting wear

Model no. 6131



Arm Pads

Model no. 6131 – Arm Pads

- Add comfort to armrests

Model no. 6125*, 6126** (not shown)



Handgrips

Model nos. 6125, 6126 – Solid Handgrips

- Padded to keep hands and wrists comfortable
- Contoured grips that limit rotation

* Model no. 6125 only available for Model nos. 8120-J, 8120-A and 8120-T crutches
** Model no. 6126 only available for Model nos. 8115-J, 8115-A and 8115-T crutches

Invacare® transfer benches help make transfers in and out of the bathtub safer and more comfortable. One-inch anodized aluminum frame is rust resistant. Features an arm rail for support and non-marring rubber tips.

Invacare® I•Class™ Heavy-Duty Transfer Benches

Model nos. 9670 (partially assembled), 9670U (unassembled), 9670C (partially assembled with commode opening)

- Sturdy, durable, one-piece blow-molded seat
- Textured seat with drain holes
- Ergonomically shaped, reversible backrest snaps in and out easily without tools
- Built-in soap dish and hand-held shower holder



Invacare® Vinyl Padded Transfer Benches

Model nos. 9871 (partially assembled), 9871-1 (partially assembled)

- Vinyl seat and back are padded with 1 ¼" open-cell foam for comfort



Invacare® CareGuard™ Tool-less Transfer Bench

Model no. 98071

- Compact design
- Three-piece blow-molded seat
- Textured seat with drain holes
- No tools required to assemble
- Hand hole in seat back for easy transport
- Suction cups
- 1/2" increments



Specifications

Model no.	Seat height min. - max.	Seat depth	Seat width	Overall height min. - max.	Clearance beneath frame min. - max.	Overall width at base min. - max.	Overall depth at base min. - max.	Height adjustments (in ½" increments)	Weight	Weight capacity	Units/ carton	Limited warranty
9670, 9670U, 9670C	18" - 22 ½"	18"	33 ¼"	31 ¼" - 35 ¾"	14 ½" - 19"	30 ½" - 31"	16 ¼" - 17"	9	12 lb.	400 lb.	2; 1; 2	lifetime
9871, 9871-1	17 ½" - 22"	16"	23"	28 ½" - 33"	14 ½" - 19"	30 ½" - 31"	16 ¼" - 17"	9	13 lb.	300 lb.	2, 1	lifetime
98071	18" - 22"	16 ¼"	27"	30" - 34"	14 ¾" - 18 ¾"	29"	15 ¼"	9	10 lb.	315 lb.	2	3 years

Invacare's new I-Fit™ and CareGuard™ shower chairs offer stability, comfort, and tool-less assembly in seconds.

Invacare® I-Fit™ Shower Chairs

Model no. 9781 (with back), Model no. 9780 (without back)

- Tool-less assembly
- Deep and wide seating surface
- Contoured seat with drain holes and ergonomic backrest
- Plastic legs with twist height adjustments
- Numbering system built into legs to help keep chair level



Invacare® shower chairs are designed for individuals who require seating support when bathing or showering and provide comfort and safety in the bathtub. Available with a composite or vinyl padded seat, shower chairs fit in most standard tubs and showers.

Invacare® CareGuard™ Tool-Less Shower Chairs

Model no. 91-2 and 96-2

- No tools required to assemble
- Deep wide seating surface
- Contoured seat with ergonomic backrest
- Aluminum legs with 1/2" snap button adjustments to help with stability
- Textured seat with drain holes
- Hand hole built into seat back for easy transport
- Wide-based crutch tips to help increase stability



NEW

Invacare® Vinyl Padded Shower Chair

Model no. 9872 (assembled)

- Vinyl seat and back are padded with 1 1/4" open-cell foam for comfort
- Nine height adjustments in 1/2" increments
- Non-marring rubber tips



Specifications

Model no.	Seat height min. - max.	Seat depth	Seat width	Back height from seat	Overall width at base min. - max.	Overall depth at base min. - max.	Weight	Weight capacity	Units/carton	Limited warranty
9781	15" - 21"	18"	20"	14 1/4"	16 1/4"	17 1/4"	10 lb.	400 lb.	2	lifetime
9780	15" - 21"	18"	20"	n/a	16 1/4"	17 1/4"	8 1/4" lb.	400 lb.	2	lifetime
9872	17 1/2" - 22"	16"	15 1/2"	14 3/4"	19 1/4" - 19 3/4"	16 1/4" - 17"	9 lb.	250 lb.	2	lifetime
*91-2	16 1/8" - 22"	12 3/4"	21"	n/a	17 1/4"	9 1/2" - 18 7/8"	5 7/8 lb.	315 lb.	2	3 years
*96-2	16 1/8" - 22"	12 3/4"	21"	17 1/4"	17 1/4"	13 3/4" - 18 1/2"	6 3/8 lb.	315 lb.	2	3 years

*91-2 and 96-2 – 1/2" increments on leg extensions

Invacare® folding shower chairs offer bathing comfort and support and fold easily for storage or travel. Features include a contoured blow-molded seat and optional backrest, one-inch anodized aluminum frame, and fixed-height legs.



Invacare® Folding Shower Chair With Back

Model no. 9981 (with back - assembled)

- Wide contoured seat and back
- Ergonomically positioned drain holes allow consistent drainage
- Hand-held shower holders are molded in for convenience
- Non-marring rubber tips



Specifications

Model no.	Seat height	Seat depth	Seat width	Back height from seat	Overall width at base	Overall depth at base	Folded length	Folded width	Folded depth	Weight	Weight capacity	Units/carton	Limited warranty
9981	17 1/2"	17"	19 3/4"	12"	16 3/4"	17 3/4"	25 1/2"	19 3/4"	7 1/2"	6 lb. 8 oz.	250 lb.	2	lifetime



Invacare® Mobile Shower Chair

Model no. 6358 (partially assembled)

The Invacare mobile shower chair is designed for safe transport to and from the shower. Features include a flexible nylon backrest, anodized, non-corrosive 1" aluminum tubing, and 5" swivel casters with rear wheel safety locks. Once pail is removed, chair easily rolls over most toilets.



Specifications

Model no.	Seat height	Seat-to-armrest height	Width between arms	Height overall	Width overall	Length overall	Casters	Weight	Weight capacity	Units/carton	Limited warranty
6358	21"	8"	18"	38"	22 3/8"	24"	5"	11 lb.	250 lb.	2	3 years

Invacare® Aids to Daily Living

Invacare® aids to daily living are designed to help make everyday living as easy and convenient as possible.



Invacare® Male Urinal

Model no. 80101-3

- Wipe-clean, durable polyethylene
- Measurements marked on outside (ounce and cubic-centimeter)
- Capacity 32 oz. /1,000 cc
- Three units per carton
- One year limited warranty



Invacare® Inflatable Cushion

Model no. 80104-4

- Convenient for home, car or workplace
- Sit comfortably for long periods of time
- Wipe-clean, durable vinyl
- 16" overall width
- 4" ring-opening diameter
- Four units per carton
- One year limited warranty

Invacare® grab bars are designed to give added security in and around the bathroom, and provide years of trouble-free service.

Invacare® I•Class™ Tub Bar

Model no. 710-4

The Invacare I•Class tub bar provides two gripping surfaces. The upper gripping position helps consumers enter the tub without turning the wrist or body. The lower gripping position helps consumers to lower into or rise from a seated position in the tub.

Features

- Easy-to-adjust locking mechanism allows consumers with limited dexterity to lock bar securely
- Lightweight, portable and waterproof
- No tools or assembly required, making installation easy
- Attractive white molded bar blends well with most bathroom decor
- Non-marring pads protect tub wall

Specifications

Model no.	Height	Length	Bracket adjustment	Weight	Weight capacity	Units/ carton	Limited warranty
710-4	16"	8 1/4"	1 1/4" - 6"	5 lb.	250 lb.	4	3 yr body 1 yr component



Invacare® Residential Grab Bars



Knurled Grab Bars (Residential)

Model nos. 512-3, 516-3, 518-3, 524-3, 532-3

Our knurled grab bars are constructed of heavy-gauge steel for added stability with a knurled, chrome-plated finish that is rust-resistant. They mount in a variety of angles to a wall's structural supports, with rubber gaskets to protect the wall surface.



Firmgrip Grab Bars (Residential)

Model nos. 312-3, 316-3, 318-3, 324-3, 332-3

These grab bars include a soft-touch, Firmgrip white vinyl coating, sturdy all-steel construction with 3 3/4-inch wall clearance, and a 1" O.D. gripping area.

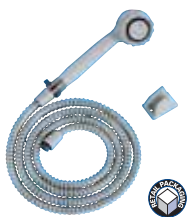
Grab Bar Specifications *

Model no.	Length	Gripping diameter	Clearance from wall	Product description	Weight	Weight capacity	Units/ carton	Limited warranty
312-3, 512-3	12"	1"	3 3/4"	Firmgrip/knurled	1 lb.	250 lb.	3	lifetime
316-3, 516-3	16"	1"	3 3/4"	Firmgrip/knurled	1 lb. 4 oz.	250 lb.	3	lifetime
318-3, 518-3	18"	1"	3 3/4"	Firmgrip/knurled	1 lb. 8 oz.	250 lb.	3	lifetime
324-3, 524-3	24"	1"	3 3/4"	Firmgrip/knurled	1 lb. 12 oz.	250 lb.	3	lifetime
332-3, 532-3	32"	1"	3 3/4"	Firmgrip/knurled	2 lb.	250 lb.	3	lifetime

* All models are not ANSI or ADA compliant.

Invacare® Hand Showers

Invacare hand showers are lightweight and feature a wall bracket for mounting on the shower wall and a white finish.



Deluxe Hand Shower

Model no. 828-4

- Adjustable head provides a choice of fine or firm spray, pulsating massage spray or a combination spray
- Comes standard with 7' chrome shielded hose
- On/Off switch



Standard Hand Shower

Model no. 826-4

- Adjustable head provides a choice of fine, firm or pulsating spray
- Comes standard with 7' nylon reinforced hose

Specifications

Model no.	Units/ carton	Limited warranty
828-4	4	1 year
826-4	4	1 year

Invacare® Raised Toilet Seat and Toilet Safety Frame

Invacare® toilet safety products make the bathroom a safer environment for individuals with special needs. Choose from products with a variety of features:



Invacare® I-Class™ Clamp-On Raised Toilet Seats

Model no. 1390AP (with arms)
Model no. 1390P (without arms)

- Clamp-on locking mechanism tightens easily with one hand
- Attach without tools and fit on most round bowl configurations
- Rear seat wings for more secure attachment
- Contoured seat for internal rotation of hips
- Ample depth of front recess makes hygiene performance more convenient



NEW



A Invacare® CareGuard™ Raised Toilet Seat

Model no. 685-4

- Elevates existing seat height by 5"
- Comfortable, contoured seat is made of easy-to-clean, durable molded composite
- Recommended for use with toilet safety frame
- Fits on most round bowl configurations

B Invacare® Toilet Safety Frame

Model no. 1392KD

- Arms fold back for cleaning and are easily removed for transfers
- Armrests provide secure hand support
- Frame is made of anodized, non-corrosive 1" aluminum tubing
- Aluminum bracket is easy to attach

Toilet Seat Specifications

Model no.	Seat height min. - max.	Seat width	Seat depth	Arm height above seat	Width between arms	Weight	Weight capacity	Units/carton	Limited warranty
1390P	4 ½"	21"	17"	n/a	n/a	4 ½ lb.	275 lb.	2	1 year
1390AP	4 ½"	21"	17"	5 ¾"	17 ½"	5 lb.	275 lb.	2	1 year
685-4	5"	14 ¾"	15 ½"	n/a	n/a	3 lb. 6 oz.	250 lb.	4	lifetime

Toilet Safety Frame

Model no.	Arm height from floor	Distance between arms	Weight	Weight capacity	Units/carton	Limited warranty
1392KD	25 ¾" - 30" min. - max.	17 ½" - 20 ½" min. - max.	2 lb. 5 oz.	250 lb.	2	lifetime

All adjustable-height Invacare® commodes include a snap-on seat with pail. They offer armrests for comfort, angled legs for stability, non-marring rubber tips and anti-rattle collars that reduce noise.



Extra-wide snap-on seat with hygienic opening.



Invacare® Bariatric Commode

Model no. 6499-BHD

The Invacare bariatric commode is designed to suit the needs of bariatric individuals weighing up to 700 pounds. With its extra-wide seat and durable steel frame design, it offers users the strength and comfort they need.

Features

- 700 lb. weight capacity
- Extra-wide, snap-on seat with lid
- Lid upholstery can be reversed for added comfort
- Hygienic seat opening
- Seat flips up for easy cleaning with rectangular pan removed
- Can be used bedside, or with backrest removed can act as a toilet safety frame or raised toilet seat
- Bottom seat lip eliminates the need for splash shield if used over the toilet
- Rectangular pan can be removed from the front or rear of the commode
- Adjustable seat-to-floor height
- Rectangular pan (part no. 13245X000) also available as an accessory

Invacare® Heavy-Duty Commode

Model no. 6496

- 450lb. weight capacity
- Designed for bedside use
- Large, clamp-on seat and lid
- Gray powder-coated, 1" welded steel frame
- Rectangular pan and pan holder
- Armrests for added comfort

Specifications

Model no.	Base width overall	Width between arms	Seat surface width	Seat opening width	Base depth overall	Seat surface depth	Seat opening depth	Height overall min. - max.	Seat-to-floor height min. - max.	Seat-to-arm height	Product weight	Weight capacity	Units/ carton	Limited warranty
6499-BHD	30"	26"	25"	8 ¾"	22 ½"	16"	11"	26 ½" - 30 ½"	18" - 22"	8"	23 lb.	700 lb.	1	lifetime
6496	27"	23 ½"	16"	8 ¾"	19 ¼"	16"	12 ½"	27 ¼" - 31 ¼"	18 ¾" - 22 ¾"	8 ½"	17 lb.	450 lb.	2	lifetime

Invacare's All-in-One Commode offers consumers the comfort and stability they need. The frame is lightweight. With its 16-inch wide seat, consumers gain additional comfort and support. The Invacare All-in-One Commode can be used bedside, or can act as a toilet safety frame or raised toilet seat.



Large 16" wide snap-on seat for added comfort and support.

Invacare® I-Class™ All-In-One Commode

Model no. 9630-1 (shown, gray-coated steel, one per carton), 9630-4 (gray-coated steel, four per carton)

Features

- Can be used as a toilet safety frame, a raised toilet seat, or outside the bathroom as a stationary commode
- Equipped with a splash shield
- Wing nuts allow easy removal of backrest when needed
- Snap-on seat and lid



Large 16" wide snap-on seat for added comfort and support.

Invacare® All-In-One Aluminum Commode

Model no. 9650-4

Features

- Lightweight aluminum frame is rust resistant
- Large 16" wide snap-on seat with lid for added comfort and support
- Greater seat opening depth for hygienic purposes
- Can be used bedside, or with backrest removed can act as a toilet safety frame or raised toilet seat
- Comes complete with commode bucket, bucket cover and splash shield
- Wing nuts allow for removal of backrest when needed
- Non-marring rubber tips have bottom hole for drainage after cleaning
- Armrests provide added comfort

Specifications

	Base width overall	Width between arms	Seat surface width	Seat opening width	Base depth overall	Seat surface depth	Seat opening depth	Height overall min.-max.	Seat-to-floor height min.-max.	Seat-to-arm height	Product weight	Weight capacity	Quantity	Limited warranty
9630-1, 9630-4	25"	19"	16"	8 ½"	19"	14"	10"	23" - 29"	16" - 22"	7 ½"	12 lb.	300 lb.	4 per carton	lifetime
9650-4	25"	19"	16"	8 ½"	19"	14"	10"	23" - 29"	16" - 22"	7 ½"	8 lb.	300 lb.	4 per carton	lifetime

Invacare® Safeguard Commode

Model no. 9610-4 (gray-coated steel, four per carton)

- Can be used as a raised toilet seat or a toilet safety frame
- Equipped with a splash shield
- Snap-on seat



Invacare® Drop-Arm Commode

Model no. 9669 (one per carton)

Features

- Can be used over the toilet with optional splash shield
- Accommodates transfers in restricted areas
- Drop-arm lever operates simply: lift to lock or push to release
- Gray powder coated, 1-inch welded steel tubing
- Snap-on seat and lid



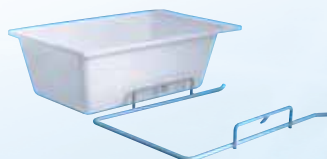
Specifications

	Base width overall	Width between arms	Seat surface width	Seat opening width	Base depth overall	Seat surface depth	Seat opening depth	Height overall min.-max.	Seat-to-floor height min.-max.	Seat-to-arm height	Product weight	Weight capacity	Quantity	Limited warranty
9610-4	25"	19"	16"	8 1/2"	19"	14"	10"	23" - 29"	16" - 22"	7 1/2"	12 lb.	300 lb.	4 per carton	lifetime
9669	20 1/4"	17 1/2"	14"	8 1/4"	20 1/2"	15"	9 1/2"	27" - 31 1/2"	17" - 21"	8"	22 lb.	250 lb.	1 per carton	3 years

Invacare® Pan and Holder

Part no. 13245X000 (pan)
Part no. 1027004 (holder)

- 8-quart pan capacity



Specifications

Part no.	Length overall	Length inside	Width overall	Width inside
13245X000	16 3/4"	14"	10"	9"

Invacare® Pail with Lid

Model no. 6317 (12 per carton)

- 12-quart pail capacity



Invacare® Splash Shield

Model no. 6319 (12 per carton)



Invacare's Mariner™ Rehab Shower Commode Chairs offer aluminum frames and stainless steel hardware that are rust-resistant, making them ideal for use in the shower. These new chairs fit over most standard and elongated bowls for over-the-toilet use as well. They feature flip-back padded arms that lock down for safety swing-away front riggings with tool-less adjustable height footrests and a four-position padded seat. The new Invacare® Mariner offers various seat widths and wheel options for a custom fit along with additional features and benefits.



Model nos. 6895 - 23" treaded urethane tires with 18 1/4" seat (shown).
6795 - 23" treaded urethane tires with 16" seat
6891 - Four 5" locking casters with 18 1/4" seat

Features

- Aluminum frame and stainless steel hardware
- Fits over most standard and elongated toilet bowls
- Padded four-position seat
- Flip-back padded arms that lock down for safety
- Swingaway front riggings
- Tool-less adjustable height footrests
- Folds into a compact unit for storage and transport
- Removable pan and pan holder
- Safety strap included
- 23" treaded urethane tires and 5" casters models



Flip-back padded arms that lock down for safety.



Padded four-position seat.



Swing away front riggings with tool-less adjustable height footrests.

Specifications

Specifications	6895 - 18 1/4" seat	6795 - 16" seat	6891 - 18 1/4" seat/5" casters
Overall chair width (handrim to handrim)	26 1/2"	24 1/2"	22 1/2" (no handrim)
Overall back width	18"	16"	18"
Overall chair height (floor to top of push handle)	39"	39"	39"
Overall depth w/o front riggings	32"	32"	29"
Seat width	18 1/4"	16"	18 1/4"
Seat depth	18 1/4"	16"	18 1/4"
Width between arms	18 1/2"	16 1/2"	18 1/2"
Folded width	12"	12"	8"
Seat-to-floor height	22 3/4"	22 1/2"	22 3/4"
Seat-to-armrest height	8"	8"	8"
Back height (top of seat to top of upholstery)	15 1/2"	15"	15 1/2"
Footrest extension min.-max. (from top of seat)	13"-18"	13"-18"	13"-18"
Product weight	41 lb.	39 lb.	32 lb.
Weight capacity	300 lb.	300 lb.	300 lb.
Quantity	1 per carton	1 per carton	1 per carton
Limited warranty	3 years	3 years	3 years
Clearance for over-the-toilet use			
Depth (front cross brace to edge of rear tire)	26 1/2"	26 1/2"	23 1/2"
Depth (rear wheel axle bolt to edge of tire)	11 1/2"	11 1/2"	n/a
Height (floor to seat base)	20 1/4"	20 1/2"	20 3/4"
Inside width (between side frames)	16"	14"	16"



Yes, you can.®

MERCHANDISING

Invacare is pleased to offer our valued professional health care providers the Invacare® Health Care Provider Merchandising Program. This program has been exclusively designed to provide health care providers with the tools and support necessary to build consumer sales. This professional merchandising program contains the following tools:

- Retail Product Packaging
- Planograms
- Point-of-Sale Displays
- Signage

Planograms provide the health care provider with pre-designed product layouts in 4', 8' and 12' sections. Planograms provide recommended product location, quantity, and hook size. In addition, planograms include product displays and signage.

For additional information and support on building consumer sales, contact your Territory Business Manager or 1.) go to www.invacare.com 2.) Under 'browse catalog' select self-care and patient aids 3.) Click on 'planogram' icon 4.) Browse merchandising display options



8-foot planogram shown

Planogram designs are subject to change without notification. Contact Sales Support at 800-333-6900 for up-to-date information.

*Look for Invacare's new graphics and revised planograms currently under conversion.

Invacare Corporation
www.invacare.com

USA

One Invacare Way
Elyria, Ohio
44035-4190
(800) 333-6900

Canada

570 Matheson Blvd. E.
Unit 8
Mississauga, Ontario
L4Z 4G4 Canada
(800) 668-5324

Invacare, the Blue Medallion Design and Yes, you can. are registered trademarks and the Bariatric Solutions design, Court-Side Glides, Blue-Release, CareGuard, I•Class, I-Fit, IVC, Mariner, Rollite, SureGlide, Sprint and WalkLite are trademarks of Invacare Corporation. Velcro is a registered trademark of Velcro Industries B.V. Specifications are subject to change without notification. Patents: 5,529,425 D480,666, D480, 995 and D483,702.5, 529,425 D480,666 D480,995 and D483,702. Other Patents pending.

© 2006

Invacare Corporation
Form No. 00-267
Rev. 09/06



"Invacare says 'Yes, you can', and I couldn't have said it better myself."