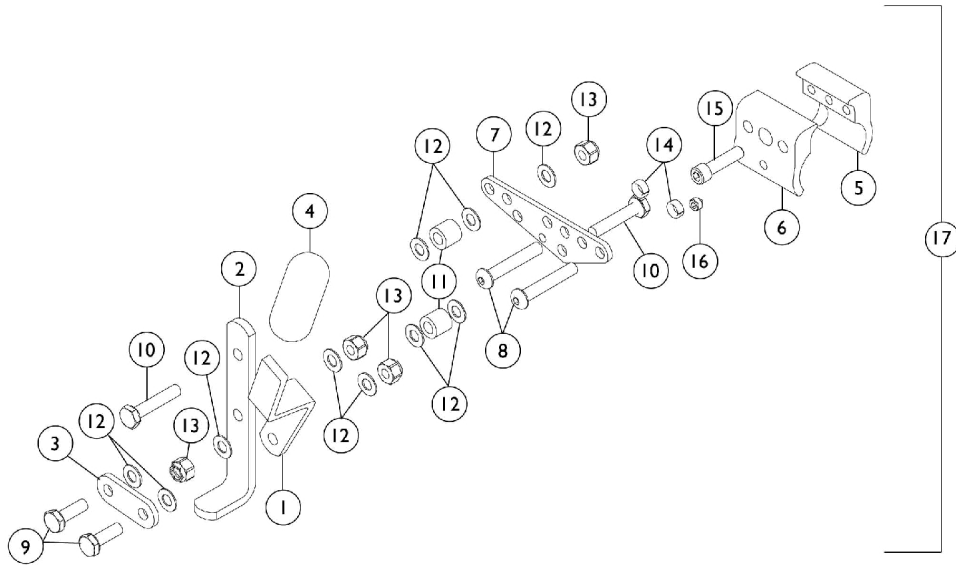


Wheel Lock - 24" Wheel (After 1/99)

THE PRODUCTION OF THE HTR IS CURRENTLY SUSPENDED AND SOME SERVICE PARTS MAY NOT BE AVAILABLE TO ORDER.



Wheel Lock - 24" Wheel (After 1/99)

THE PRODUCTION OF THE HTR IS CURRENTLY SUSPENDED AND SOME SERVICE PARTS MAY NOT BE AVAILABLE TO ORDER.

Item Number	Note	Part Number	Description	Quantity Per	
				Package	Assembly
1		BM42	Handle, Black	1	1
2		1084204-NLA	NLA - Shoe, Wheel Lock	1	1
3		440586	Link	1	1
4		B412M-NLA	NLA - Handle, Tip, Black	1	1
4		47376X024	Tip, Rubber Wheel Lock Handle, Black	1	1
5		1108197-NLA	Clamp, Threaded - Right	1	1
5		1108198	Clamp, Threaded - Left	1	1
6		1072398-NLA	NLA - Clamp, Non-threaded	1	1
7		1072394-NLA	NLA - Plate	1	1
8		1008495	Screw, Socket Button Head (1/4-20 x 1-1/2")	1	2
9		1025708-NLA	NLA - Bolt, Hex Head Cap (1/4-20 x 3/4")	1	2
10		1021406	Screw, Hex Head (1/4-20 x 1-1/4")	1	2
11		1057946-NLA	NLA - Spacer (17/64 x 31/64 x 7/16")	1	2
12		1026103-NLA	NLA - Washer, Nylon (1/4 x 1/2 x 1/32")	1	10
13		1025736	Locknut (1/4-20)	1	4
14		1108159-NLA	NLA - Spacer (1/4 x 3/8 x 5/32")	1	2
15		1027268	Screw, Allen Head (1/4-20 x 1")	1	1
16		1101207-NLA	NLA - Screw, Set Socket Cone Point (1/4-20 x 1/4")	1	1
17	B	1109173-NLA	NLA - Kit, Wheel Lock (24")	1	1
			NLA - Wheel Lock Assembly, Black - Right	1	1
			NLA - Wheel Lock Assembly, Black - Left	1	1
			NLA - Instruction Sheet	1	1
17		1108172-NLA	NLA - Wheel Lock Assembly, Black - Right	1	1
17		1108173-NLA	NLA - Wheel Lock Assembly, Black - Left	1	1
	A,C	1106657	NLA - Instruction Sheet	1	1

NOTE: A - Not Shown.
 B - Kit Includes Right and Left Wheel Lock Assembly and Instruction Sheet.
 C - Item is no longer available from the Invacare Service Parts Department. Refer to the Invacare Website under "Product Literature Search". Enter the part number in the "Keywords" field and download a free PDF version copy.