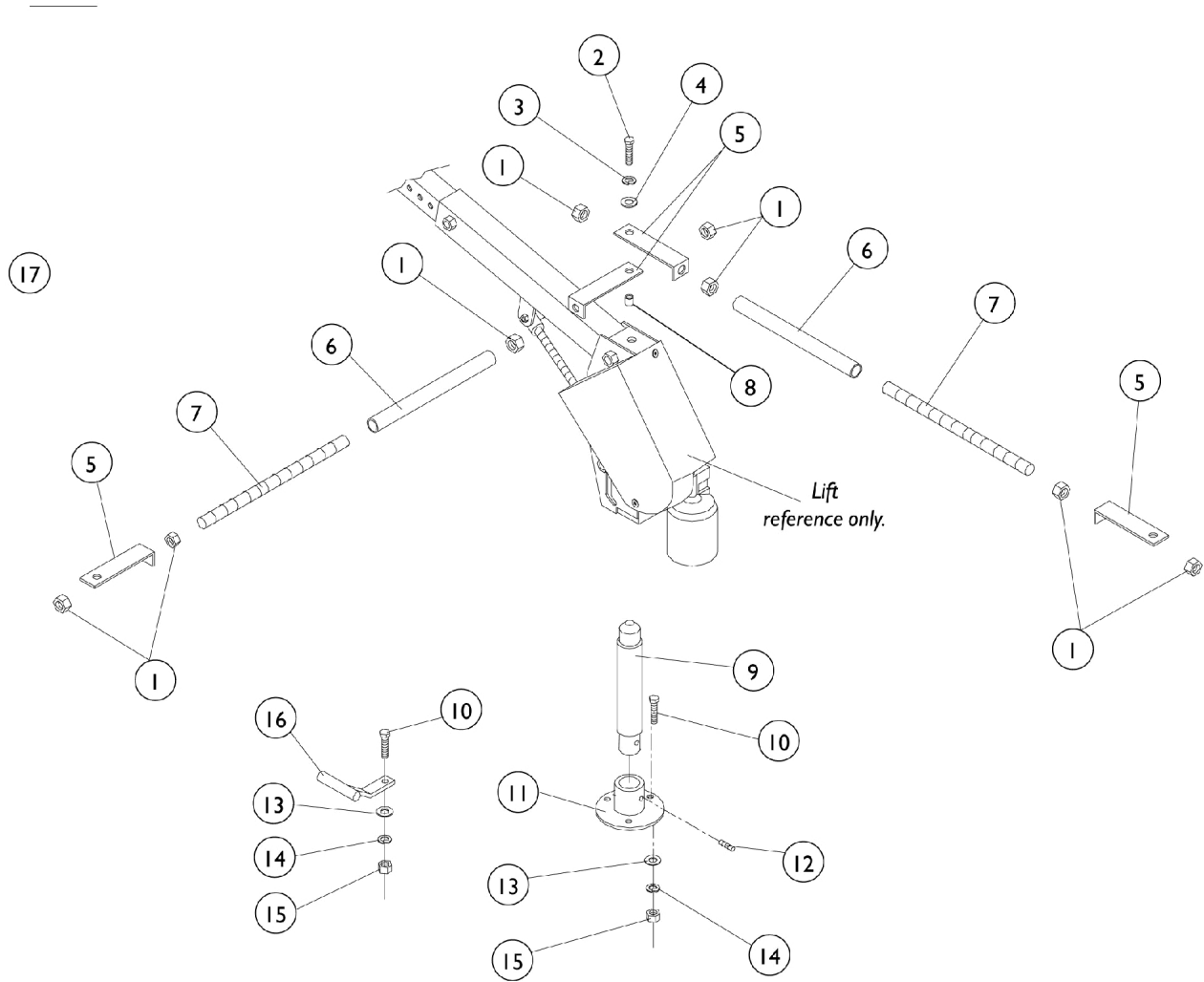


Trunk Base Assembly (Optional)



Trunk Base Assembly (Optional)

Item Number	Note	Part Number	Description	Quantity Per	
				Package	Assembly
1		AP100553-NLA	NLA - Hex Nut (1/2-13)	1	8
2		AP100992-NLA	NLA - Screw, Hex Head (3/8-16 x 1-1/4")	1	1
3		AP100839-NLA	NLA - Lockwasher (3/8 x 11/16 x 3/32")	1	1
4		AP100633-NLA	NLA - Washer, Flat (7/16 x 1 x 5/64")	1	1
5		AP072363-NLA	NLA - Plate, Trunk Mount	1	4
6		AP072388-NLA	NLA - Cover, Trunk, Rod Vinyl	1	1
7		AP072371	NLA - Rod, Trunk Mount	1	1
8		AP072362-NLA	NLA - Bushing, Trunk Mount	1	1
9		AP072752-NLA	NLA - Bearing Rod Assembly, Standard (6")	1	1
9		AP072477-NLA	NLA - Bearing Rod Assembly, Opt (9")	1	1
10	A	AP100581-NLA	NLA - Screw, Hex Head (5/16-18 x 1-1/2")	1	4
10	A	AP100879-NLA	NLA - Screw, Hex Head (5/16-18 x 2-1/4")	1	4
10	A	AP100584-NLA	NLA - Screw, Hex Head (5/16-18 x 3")	1	4
11		AP072370-NLA	NLA - Stand, Trunk	1	1
12		AP100682-NLA	NLA - Screw, Socket Set (5/16-18 x 3/8")	1	1
13		AP100632-NLA	NLA - Washer, Flat (5/16 x 7/8 x 5/64")	1	4
14		AP100838-NLA	NLA - Lockwasher (5/16 x 19/32 x 3/32")	1	4
15		AP100619-NLA	NLA - Hex Nut (5/16-18)	1	4
16		AP072355-NLA	NLA - Anchor, Hold Down	1	1
17	B	AP072376-NLA	NLA - Trunk Base Assembly (Optional)	1	1

NOTE: A - The installer will choose which length screws are needed depending on the thickness of the vehicle floor the lift is being mounted to.
B - Includes items 1-16.