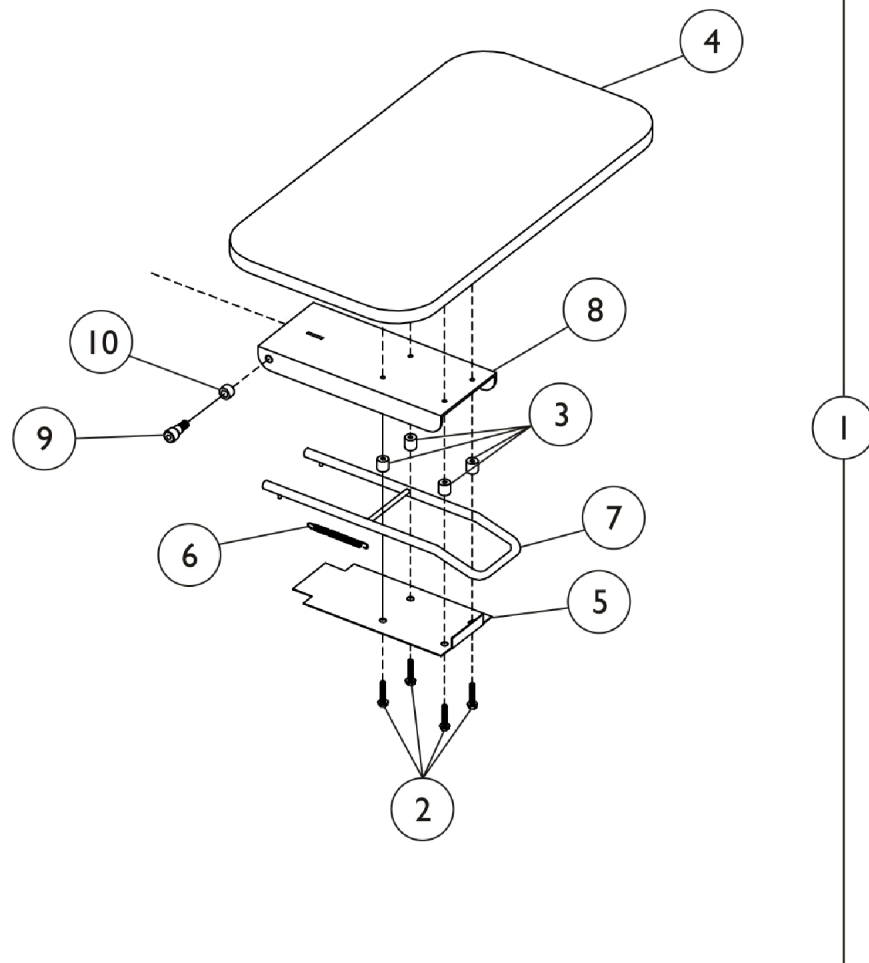


Tray - 6908A

Clinical Recliner

Model Number 6908A-XX



Tray - 6908A

Item Number	Note	Part Number	Description	Quantity Per	
				Package	Assembly
1	A,B	1127864-NLA	NLA - Kit, Tray Assembly	1	1
			NLA - Tray Assembly, Grey Frame Finish	1	1
			Instruction Sheet	1	1
1	A,B	7001M213-NLA	NLA - Tray Assembly, Brown Frame Finish	1	1
	E,F,G, H	1124317-NLA	NLA - Kit, Tray with Hardware	1	1
2			NLA - Screw, Phillips Round Head (#10-32 x 1")	1	4
2			NLA - Screw, Hex Head (1/4-20 x 5/8")	1	4
2			Screw, Hex Head (1/4-20 x 1/2")	1	4
3			Spacer, Nylon (3/16 X 1/2 X 1/2)	1	4
4			NLA - Tray	1	1
			Instruction Sheet	1	1
5	C	54000M602-NLA	NLA - Cover, Tray, Brown Frame Finish	1	1
5	D,J	1109696-NLA	NLA - Cover, Tray, Grey Frame Finish	1	1
6		54000M074-NLA	NLA - Spring, Extension	1	1
7		54000M076-NLA	NLA - Latch	1	1
8	C	7001M212-NLA	NLA - Tray Bracket, Brown Frame Finish	1	1
8	D,J	1109695-NLA	NLA - Tray Bracket, Grey Frame Finish	1	1
9		51000M900	Screw, Shoulder Hex Socket Head (3/8" x 3/8", 5/16-18)	1	2
10		53000M627-NLA	NLA - Washers, Nylon (3/8 x 5/8 x 1/8")	1	2
	I	1119284-NLA	NLA - Kit, Tray Hardware	1	1
			NLA - Tray, Tab	1	2
			NLA - Plug Button, Dome, Black (3/4")	1	2
			Screw, Hex Head (1/4-20 x 1/2")	1	8
			NLA - Guide	1	1
			NLA - Stop, End, Black	1	2
			NLA - Glide, Plastic, Black	1	1
NOTE: A - Two trays are needed per chair. B - Includes items 2-8. C - Before 1/18/02. D - After 1/17/02. E - Before 2/95 use Phillips Head Screw (#10-32 x 1") Item #2 included with Kit. F - After 1/95 use Hex Head Screw (1/4-20 x 5/8") Item #2 included with Kit. G - After 3/95 use Hex Head Screw (1/4-20 x 1/2") Item #2 included with Kit. H - Kit Includes Items 2-4 and Instruction Sheet. I - Not shown. J - No longer available as service parts. See 1109694 when ordering a replacement.					