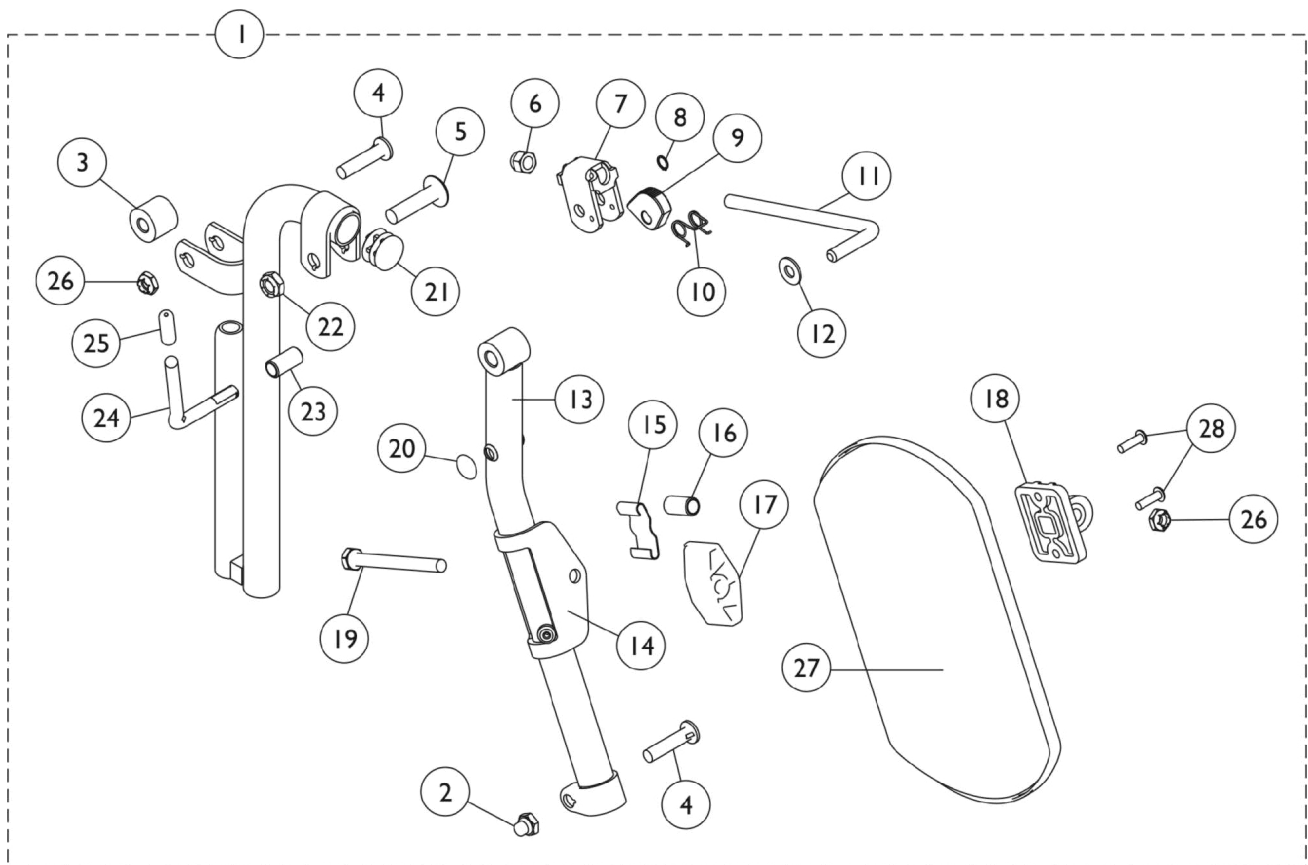


# Legrest Support Assembly TR12

**NOTE:** Due to the possibility of various manufacturing dates for Tracer IV Wheelchairs built with a serial # starting with "03H" or "03I", replacement parts will need to be ordered thru an Invacare Parts Specialist at 1-800-333-6900.



# Legrest Support Assembly TR12

**NOTE: Due to the possibility of various manufacturing dates for Tracer IV Wheelchairs built with a serial # starting with "03H" or "03I", replacement parts will need to be ordered thru an Invacare Parts Specialist at 1-800-333-6900.**

Item Number	Note	Part Number	Description	Quantity Per	
				Package	Assembly
1	A	1041818-NLA	NLA - Legrest Support Assembly, Chrome - Right	1	1
1	A	1041819-NLA	NLA - Legrest Support Assembly, Chrome - Left	1	1
2		1107321	Nut, Low Cap (5/16"-24)	1	1
3		47324X011	Bushing, Pivot (5/16 x 7/8 x 3/4")	1	1
4		11232X009	Bolt, Lug (5/16-24 x 1-3/8")	1	2
5		11919X000-NLA	NLA - Screw, Slotted Truss Head (3/8-16 x 1-1/2")	1	1
6		10261X000	Nut, Acorn (5/16-24)	1	1
7		04528X002	Bracket, Release, Black	1	1
8		1040831	Ring, Snap	1	1
9		1037125	Cam, Legrest	1	1
10		1037485	Spring, Release	1	1
11		1037126	Handle, Release	1	1
12		1013519	Washer, Nylon (5/16 x 11/16 x 1/16")	1	1
13		04526X040-NLA	NLA - Tube, Elevating Support, Chrome - Right	1	1
13		04526X041-NLA	NLA - Tube, Elevating Support, Chrome - Left	1	1
14		1025104	Bracket, Legrest, Chrome	1	1
15		48823X008	Spring, Leaf	1	1
16		47328X003	Bushing, Pivot (5/16 x 7/16 x 7/8")	1	1
17		1091220	Spacer, Legrest	1	1
18		04526X019	Plate, Legrest Pad	1	1
19		1014807	Screw, Hex Head (5/16-24 x 3-1/4")	1	1
20		1096773	Nut, Push Dome (5/16")	1	1
21		1027095	Plug Button, Black (7/8")	1	1
22		40363X000	Hex Nut (3/8"-16)	1	1
23		1009959-NLA	NLA - Support, Legrest w/ Release Handle - Right	1	1
23		1009960-NLA	NLA - Support, Legrest w/ Release Handle - Left	1	1
24		42326X001	Bar, Ratchet	1	1
25		1040060	Tip, Plastic, Black	1	1
26		60264X001	Locknut (5/16-24)	1	2
27		1098497	Pad, Calf, Black	1	1
	B,C	1046328-NLA	NLA - Kit, Ratchet	2	1

NOTE: A - Includes items 2-26.  
B - Includes items 6-12, 24-25  
C - Not shown.