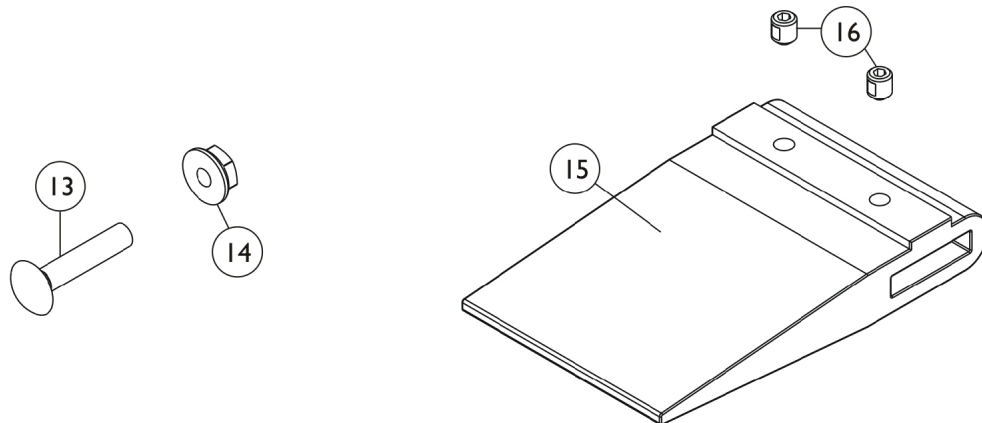
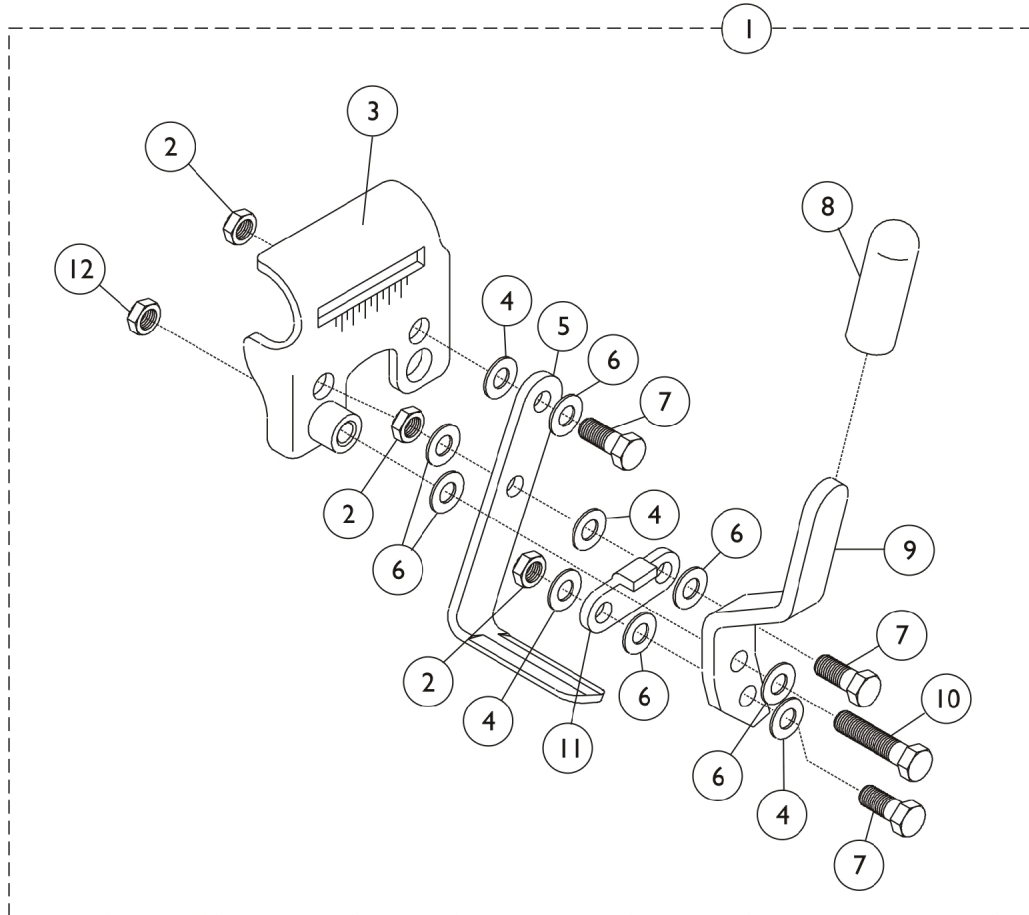


Link-Pivot Style Wheel Locks

Permanent Arm, Adult & All Transport Models

NOTE: Due to the possibility of various manufacturing dates for Tracer IV Wheelchairs built with a serial # starting with "03H" or "03I", replacement parts will need to be ordered thru an Invacare Parts Specialist at 1-800-333-6900.



Link-Pivot Style Wheel Locks

Permanent Arm, Adult & All Transport Models

NOTE: Due to the possibility of various manufacturing dates for Tracer IV Wheelchairs built with a serial # starting with "03H" or "03I", replacement parts will need to be ordered thru an Invacare Parts Specialist at 1-800-333-6900.

Item Number	Note	Part Number	Description	Quantity Per	
				Package	Assembly
1	A,E	1045861-NLA	NLA - Wheel Lock Assembly, Adult, Push to Lock, Black - Right	1	1
1	A,E	1045862-NLA	NLA - Wheel Lock Assembly, Adult, Push to Lock, Black - Left	1	1
1		1023493	Wheel Lock Assembly, Push to Lock - Right	1	1
1		1023494	Wheel Lock Assembly, Push / Lock - Left	1	1
2		60320X000	Locknut (1/4-28)	1	3
3	B	1015445-NLA	NLA - Bracket, Mounting, Chrome - Right	1	1
3	B	1015446-NLA	NLA - Bracket, Mounting, Chrome - Left	1	1
3	C	1045843-NLA	NLA - Bracket, Mounting, Chrome - Right	1	1
3	C	1045844-NLA	NLA - Bracket, Mounting, Chrome - Left	1	1
4	B	40157X004	Spacer, Nylon (1/4 x 7/16 x 1/8")	1	4
4	C	40157X016-NLA	NLA - Washer (1/4 x 1/2 x 1/16")	1	4
5		1015443-NLA	NLA - Shoe	1	1
6		1010398	Washer, Nylon (1/4 x 1/2 x 1/16")	1	6
7		60274X012-NLA	NLA - Screw, Hex Head (1/4-28 x 3/4")	1	3
8		47376X024	Tip, Rubber Wheel Lock Handle, Black	1	1
9		1016588-NLA	NLA - Handle, Push, Adult, Chrome - Right	1	1
9		1016589-NLA	NLA - Handle, Push, Adult, Chrome - Left	1	1
10		1007017-NLA	NLA - Screw, Hex Head (1/4-20 x 1-1/4")	1	1
11		1016592-NLA	NLA - Link, Chrome	1	1
12		60275X000	Locknut (1/4-20)	1	1
13		16721X000	Locknut (1/4-20)	1	1
14		1011479	Bolt, Carriage (1/4-20 x 1-1/4")	1	1
15	D	1016980	Spacer, Wheel Lock Shoe (2-63/64")	1	1
15	D	1024431	Spacer, Wheel Lock Shoe (1-45/64")	1	1
16		1008438	Screw, Set Socket Cup Point (#8-32 x 3/16")	1	2

NOTE: A - Includes items 2-13.
 B - Before 5/94
 C - After 4/94
 D - These items are needed when 20" or 22" rear wheels are on the chair.
 E - No Longer Available. Use part #'s 1023493 and 1023494 as replacements.