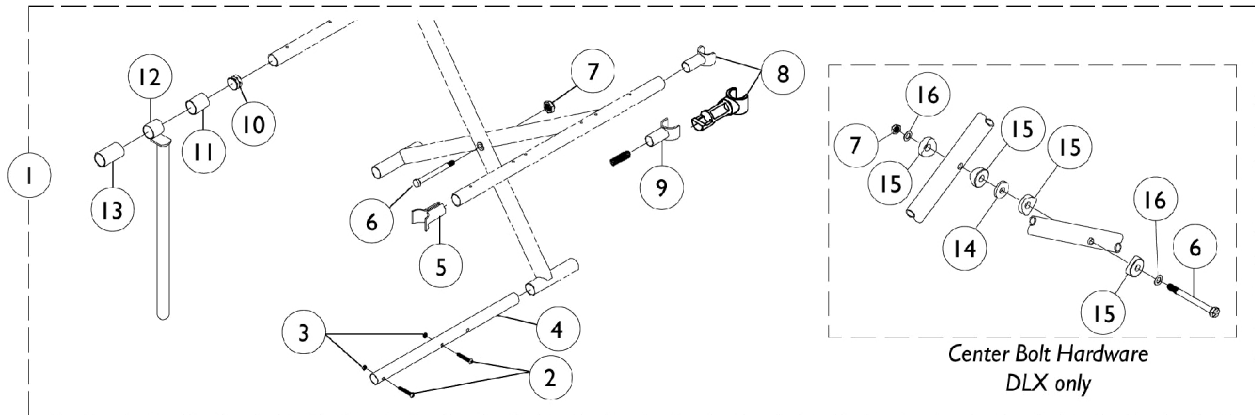


Crossbraces without Hardware

Tracer EX, Tracer DLX (Before 3/12/00), Invacare MG, Invacare MGI, and CareGuard

Crossbrace Hardware



Crossbraces without Hardware

Tracer EX, Tracer DLX (Before 3/12/00), Invacare MG, Invacare MGI, and CareGuard

Crossbrace Hardware

Item Number	Note	Part Number	Description	Quantity Per	
				Package	Assembly
1		See Chart	Hardware Packages	1	1
2		40183X002	Screw, Phillips Pan Head (#10-32 x 1-1/8")	1	4
3		1025732-NLA	NLA - Locknut (#10-24)	1	4
4	D,F,J,K	1017985	Tube, Insert	1	2
4	E,G,I,L	1086351	Tube, Insert	1	2
4	B,C	1078405	Tube, Insert	1	2
5	C,I,J	1058416	Guide, Seat, Front, Black	1	2
6	M	40317X001	Screw, Hex Head (5/16-24 x 2-3/4")	1	1
6	B	1016261	Screw, Hex Head (5/16-24 x 3-1/4")	1	1
7		1107321	Nut, Low Cap (5/16"-24)	1	1
8	M,N	1023617	Guide, Seat, Rear, Black	1	2
8	B	1076127	Guide, Seat	1	2
9	F	04723X003-NLA	NLA - Guide, Seat, Chrome	1	2
9	F	47236X001	Spring, Tension	1	2
10	D,E,F, G	1027095	Plug Button, Black (7/8")	1	2
10	B	1029501	Plug Button, Black (1")	1	2
11	D,E,F, G	47397X019	Spacer (7/8 x 1 x 1")	1	2
12	D,F	1041931-NLA	NLA - Tube, Seat Guide, Chrome (9-1/2" L)	1	2
12	E	1035659-NLA	NLA - Tube, Seat Guide, Chrome (11" L)	1	2
12	G	1085039-NLA	NLA - Tube, Seat Guide, Chrome	1	2
13	D,E,F, G	47397X020	Spacer (7/8 x 1 x 1-3/8")	1	2
14	B	1016301	Washer, Nylon (5/16 x 7/8 x 1/8")	1	1
15	B	1016263	Spacer, Coved (3/4 x 1 x 1/2")	1	4
16	B	1016652	Washer (5/16 x 9/16 x 1/32")	1	2
	A	See Chart	Crossbraces without Hardware	1	1

NOTE: A - Not Shown.
 B - Used on Tracer DLX Before 3/12/00. (Hardware group #1075870)
 C - Used on CareGuard Removable Arm and Invacare MG & MGI Fixed Front Frames. (Hardware group #1080050)
 D - Used on Tracer EX 16-18" Wide Chairs with Removable Arms and "S" Frames or Invacare MG with Removable Arms and "S" Frames. (Hardware group #1064237)
 E - Used on Tracer EX 16-18" Wide Chairs w/Removable Arms and "Box" Frames or Invacare MG & MGI 14-18" Wide w/Removable Arms and "Box" Frames. (Hardware group #1086353) Chairs need quantity 4 of part number 1086351.
 F - Used on Tracer EX 20" Wide Chairs w/Removable Arms and "S" Frames or Tracer EX Permanent Arms with "S" Frames. (Hardware group #1078420)
 G - Used on Tracer EX or Invacare MGI 20" Wide Removable Arms and "Box" Frames. (Hardware group #1085051)
 I - Used on Tracer EX, Invacare MG, or Invacare MGI Permanent Arms and "Box" Frames. (Hardware group #1086352)
 J - Used on Invacare MG with Permanent Arms and "S" Frames. (Hardware group #1064169)
 K - Used on "S" Frame Styles.
 L - Used on "Box" Frame Styles.
 M - NOT Used on Tracer DLX Before 3/12/00. (Hardware group #1075870)
 N - NOT Used on Tracer EX 20" Wide Chairs w/Removable Arms and "S" Frames or Tracer EX Permanent Arms with "S" Frames. (Hardware group #1078420)

#1 - Hardware Packages

Crossbraces without Hardware

Tracer EX, Tracer DLX (Before 3/12/00), Invacare MG, Invacare MGI, and CareGuard

#1 - Hardware Packages

Chair Model	Chair Width	Arm Type	Frame Style	Hardware Group Part Number
Tracer DLX (Before 3/12/00)	All	All	All	1075870-NLA
CareGuard	All	Removable Arm	All	1080050
Tracer EX	16-18"	Removable Arm	"S" Frame	1064237-NLA
Tracer EX	16-18"	Removable Arm	"Box" Frame	1086353-NLA
Tracer EX	20"	Removable Arm	"S" Frame	1078420-NLA
Tracer EX & Invacare MGI	20"	Removable Arm	"Box" Frame	1085051-NLA
Tracer EX	All	Permanent Arm	"S" Frame	1064169-NLA
Tracer EX	All	Permanent Arm	"Box" Frame	1086352
Invacare MG	All	Removable Arm	"S" Frame	1064237-NLA
Invacare MG & Invacare MGI	14-18"	Removable Arm	"Box" Frame	1086353-NLA
Invacare MG	All	Permanent Arm	"S" Frame	1064169-NLA
Invacare MG & Invacare MGI	All	Permanent Arm	"Box" Frame	1086352
Invacare MG & Invacare MGI	All	Fixed Front Frame	Fixed Front Frame	1080050

Crossbraces without Hardware

Tracer EX, Tracer DLX (Before 3/12/00), Invacare MG, Invacare MGI, and CareGuard

Crossbraces without Hardware

Chair Model	14" Wide Chair	16" Wide Chair	18" Wide Chair	20" Wide Chair
Tracer DLX (Before 3/12/00) Right Crossbrace	N/A	1073460-NLA	1070065-NLA	N/A
Tracer DLX (Before 3/12/00) Left Crossbrace	N/A	1073461-NLA	1070066-NLA	N/A
Tracer EX (Before 3/99) "S" Frame Right Crossbrace	N/A	1075879-NLA	1069719	1075883-NLA
Tracer EX (Before 3/99) "S" Frame Left Crossbrace	N/A	1075880-NLA	1069720	1075884-NLA
Invacare MG (Before 3/99) "S" Frame Right Crossbrace	N/A	1075879-NLA	1069719	N/A
Invacare MG (Before 3/99) "S" Frame Left Crossbrace	N/A	1075880-NLA	1069720	N/A
CareGuard and Invacare MG Fixed Frame (Before 3/99), Axle Lug Inside Right Crossbrace	N/A	1085071	1076604-NLA	N/A
CareGuard and Invacare MG (Before 3/99), Axle Lug Inside Left Crossbrace	N/A	1085072	1076605-NLA	N/A
Invacare MG and MGI Fixed Frame (After 2/99) Axle Lug Outside Tracer EX and Invacare MG (After 2/99) "Box" Frame Right Crossbrace	1091796-NLA See Note(s) A	1085071	1082479	1082482

Crossbraces without Hardware

Tracer EX, Tracer DLX (Before 3/12/00), Invacare MG, Invacare MGI, and CareGuard

Crossbraces without Hardware

Chair Model	14" Wide Chair	16" Wide Chair	18" Wide Chair	20" Wide Chair
Invacare MG and MGI Fixed Frame (After 2/99) Axle Lug Outside Tracer EX and Invacare MG (After 2/99) "Box" Frame Left Crossbrace	1091797-NLA See Note(s) A	1085072	1082480	1082483
NOTE: A - Used on Invacare MGI Only.				