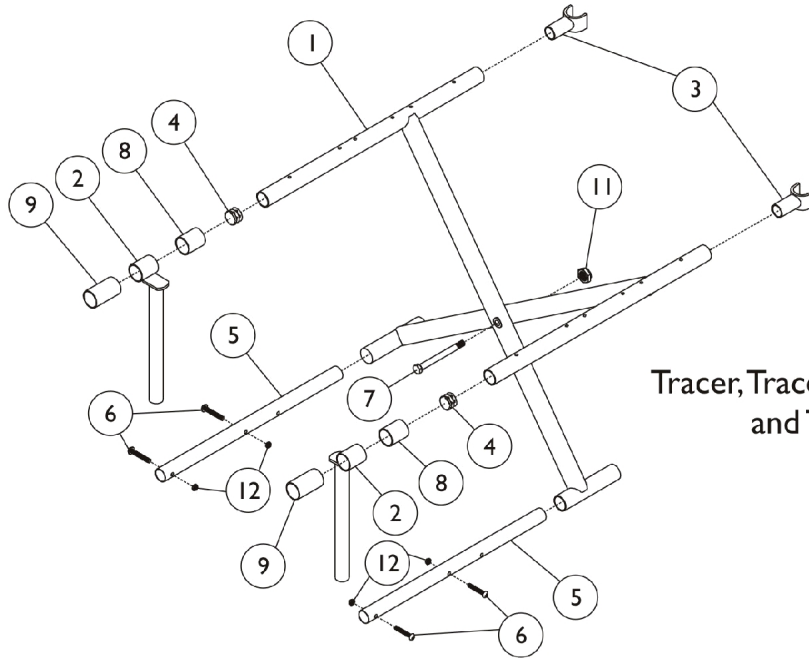


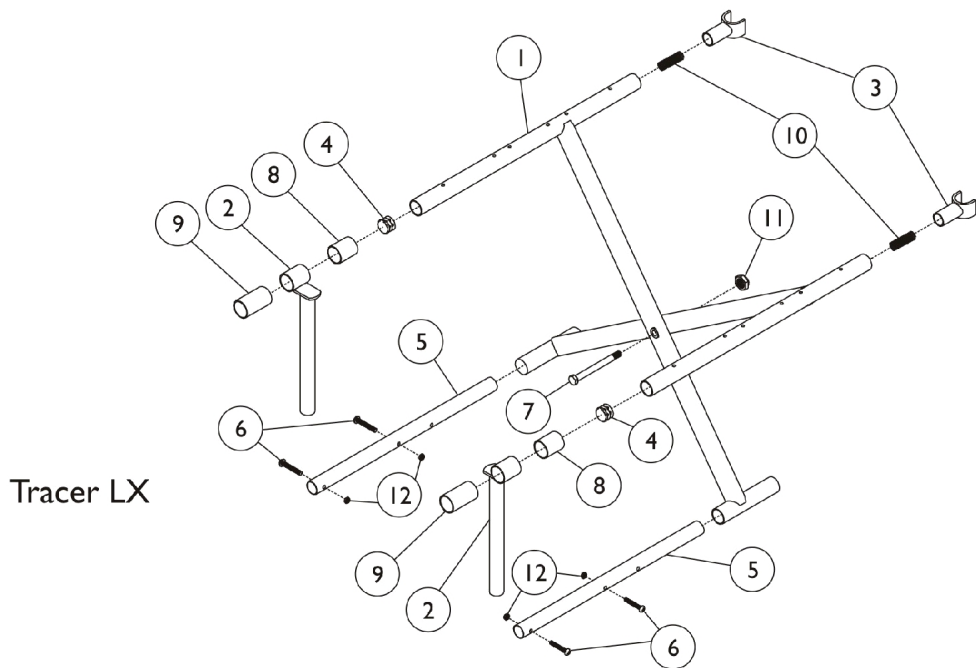
Crossbraces and Hardware

Removable Arm Chairs - Tracer, Plus, LT and Transport

NOTE: Due to the possibility of various manufacturing dates for Tracer IV Wheelchairs built with a serial # starting with "03H" or "03I", replacement parts will need to be ordered thru an Invacare Parts Specialist at 1-800-333-6900.



Tracer, Tracer Plus, Tracer LT
and Transport



Tracer LX

Crossbraces and Hardware

Removable Arm Chairs - Tracer, Plus, LT and Transport

NOTE: Due to the possibility of various manufacturing dates for Tracer IV Wheelchairs built with a serial # starting with "03H" or "03I", replacement parts will need to be ordered thru an Invacare Parts Specialist at 1-800-333-6900.

Item Number	Note	Part Number	Description	Quantity Per	
				Package	Assembly
1		See Chart	Crossbraces and Hardware	1	1
2	F	1041931-NLA	NLA - Tube, Seat Guide, Chrome (9-1/2" L)	1	2
2	G	1035659-NLA	NLA - Tube, Seat Guide, Chrome (11" L)	1	2
2		1050264-NLA	NLA - Guide, Front Seat, Hemi (20" W)	1	2
3		1023617	Guide, Seat, Rear, Black	1	2
3		04723X003-NLA	NLA - Guide, Seat, Chrome	1	2
4		1027095	Plug Button, Black (7/8")	1	2
5		1017985	Tube, Insert	1	2
6		40183X002	Screw, Phillips Pan Head (#10-32 x 1-1/8")	1	4
7		40317X001	Screw, Hex Head (5/16-24 x 2-3/4")	1	1
8	C	47397X019	Spacer (7/8 x 1 x 1")	1	2
8	D	47397X022	Spacer (7/8 x 1 x 7/8")	1	2
9	C	47397X020	Spacer (7/8 x 1 x 1-3/8")	1	2
9	D	47397X024	Spacer (7/8 x 1 x 7/16")	1	2
10	E	47236X001	Spring, Tension	1	2
11		1107321	Nut, Low Cap (5/16"-24)	1	1
12		60279X003	Locknut (#10-32)	1	4
	A,B	20228X013-NLA	NLA - Screw, Phillips Oval Head (#10 x 7/8")	1	1

NOTE: A - Not Shown
 B - For all Hemi Chairs with Solid Folding Seats.
 C - For all Adult Chairs and 20" Hemi Chairs.
 D - For all 16-18" Wide Hemi Chairs.
 E - For Tracer LT Chairs only.
 F - For 14-18" Wide Adult Chairs
 G - For 16-18" Wide Hemi and 20" Wide Adult Chairs

Crossbraces without Hardware

Chair Width	Adult - Tracer, Plus and LT	Adult - Transport Chrome	Adult - Transport Black	Hemi
14" Right	1062973-NLA	1062973-NLA	1085517-NLA	N/A
14" Left	1062974-NLA	1062973-NLA	1085517-NLA	N/A
16-1/2" Right	1062978-NLA	1062973-NLA	1075879-NLA	1035671
16-1/2" Left	1062979-NLA	1062979-NLA	1075880-NLA	1035669
18" Right	1069719 See Note(s) A	1069719 See Note(s) A	1069719	1035642
18" Left	1069720 See Note(s) A	1069720 See Note(s) A	1069720	1035640
20" Right	1062983	1062983	1075883-NLA	1050259-NLA
20" Left	1062984-NLA	1062984-NLA	1075884-NLA	1050260-NLA

NOTE: A - Chrome Finish 1045586/ 1045587 is no longer available. Order right 1069719 and left 1069720 Crossbrace to match.