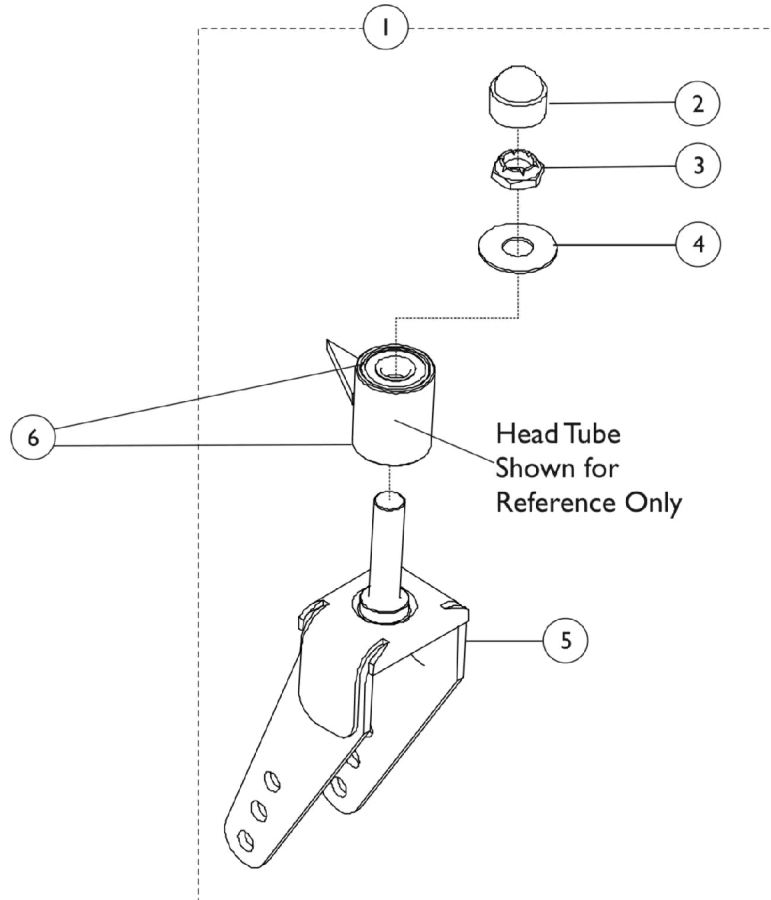


Forks and Hardware

Note: 8" Fork Assembly shown. The 6" Fork Assembly has one caster wheel mounting hole.



Item Number	Note	Part Number	Description	Quantity Per	
				Package	Assembly
1	A	1100810	Fork Assembly (6")	1	1
1	A	1100811	Fork Assembly (8")	1	1
2		1100809	Cap, Headtube, Black	1	1
3		60030X000	Locknut (5/8-18)	1	1
4		1102149	Washer, Nylon (5/8 x 1-19/32 x 1/16")	1	1
5		1100826	Fork, Black (6")	1	1
5		1100827	Fork, Black (8")	1	1
6	B	40117X006	Bearing (5/8")	1	2

NOTE: A - Includes Items 2-5.
B - Includes top and bottom bearings.