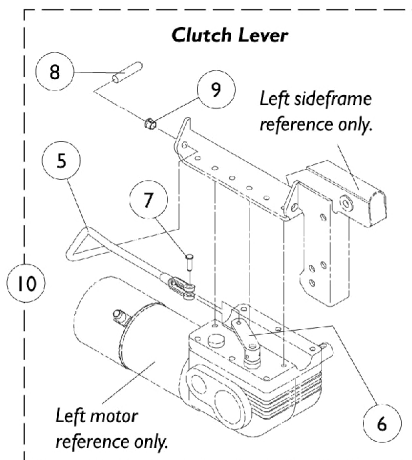
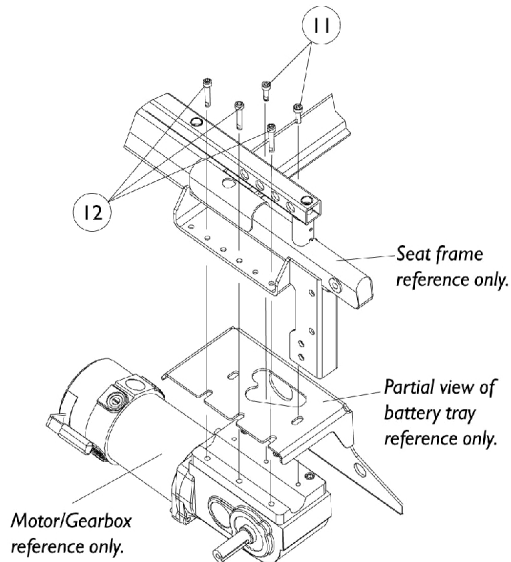
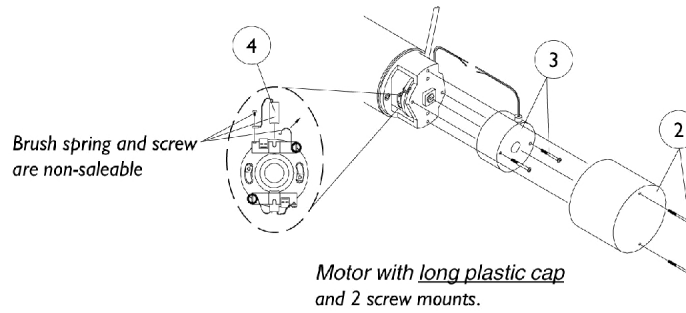
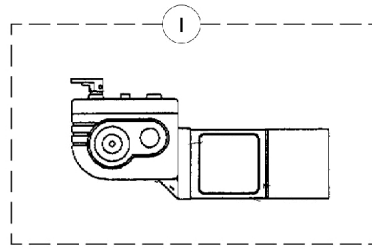


# 2-Pole Motor and Gearboxes

NOTE: MWD-R motor/gearbox is also used as a RWD-L motor/gearbox is used as a RWD-R. The part numbers are already switched around respectively for this MWD page.



## 2-Pole Motor and Gearboxes

**NOTE: MWD-R motor/gearbox is also used as a RWD-L motor/gearbox is used as a RWD-R. The part numbers are already switched around respectively for this MWD page.**

Item Number	Part Description	250 lb. Limit (Before 1/08/01) or W.S.T. 200 lb. Limit (Before 1/08/01)	250-S Models
1.	Motor/Gearbox Assembly Right	1071593-NLA See Note(s) A, A1	1071593-NLA
1.	Motor/Gearbox Assembly Left	1071594-NLA See Note(s) A1, A	1071594-NLA
2.	Brake Repair Kit	1055872-NLA See Note(s) A1, A	1055872-NLA
3.	Brake Cover w/ Screws (Pair)	1038361-NLA See Note(s) C, A, A1	1038361-NLA See Note(s) C
4.	Brushes w/o Cap (Pair)	561-005-NLA See Note(s) A, A1	561-005-NLA
5.	Clutch Lever Right	1098712-NLA See Note(s) B, A, A1	1098712-NLA See Note(s) B
5.	Clutch Lever Left	1098713-NLA See Note(s) A1, B, A	1098713-NLA See Note(s) B
6.	Bracket, Clutch Lever	1071567-NLA See Note(s) A, A1	1071567-NLA
7.	Pin Clevis	1071568 See Note(s) A, A1	1071568
8.	Tip, Plastic	1040060 See Note(s) A1, A	1040060
9.	Bushing, Snap	1071562-NLA See Note(s) A1, A	1071562-NLA
10.	Clutch Lever Assembly Right	1074114-NLA See Note(s) A1, A	1074114-NLA
10.	Clutch Lever Assembly Left	1074135-NLA See Note(s) A, A1	1074135-NLA
11.	Screw, Socket Head Cap with Patch (M6 x 20MM)	1071505 See Note(s) A, A1	1071505
12.	Screw, Socket Head Cap with Patch (M6 x 35MM)	1071504-NLA See Note(s) A, A1	1071504-NLA

NOTE: A - After 1/7/01 the 250 lb. limit and 200 lb. limit W.S.T. categories were discontinued and reclassified under the 300 lb. limit and 250 lb. limit W.S.T. respectively using 4 Pole motor standard.  
A1 - Only the 250-S models are manufactured with 2 Pole motors after 1/7/01.  
B - Short end of clutch lever was lengthened from 2" to 2-3/4" long as of 12/11/00. Replace in pairs for chairs manufactured before 12/11/00.  
C - Sold in pairs only