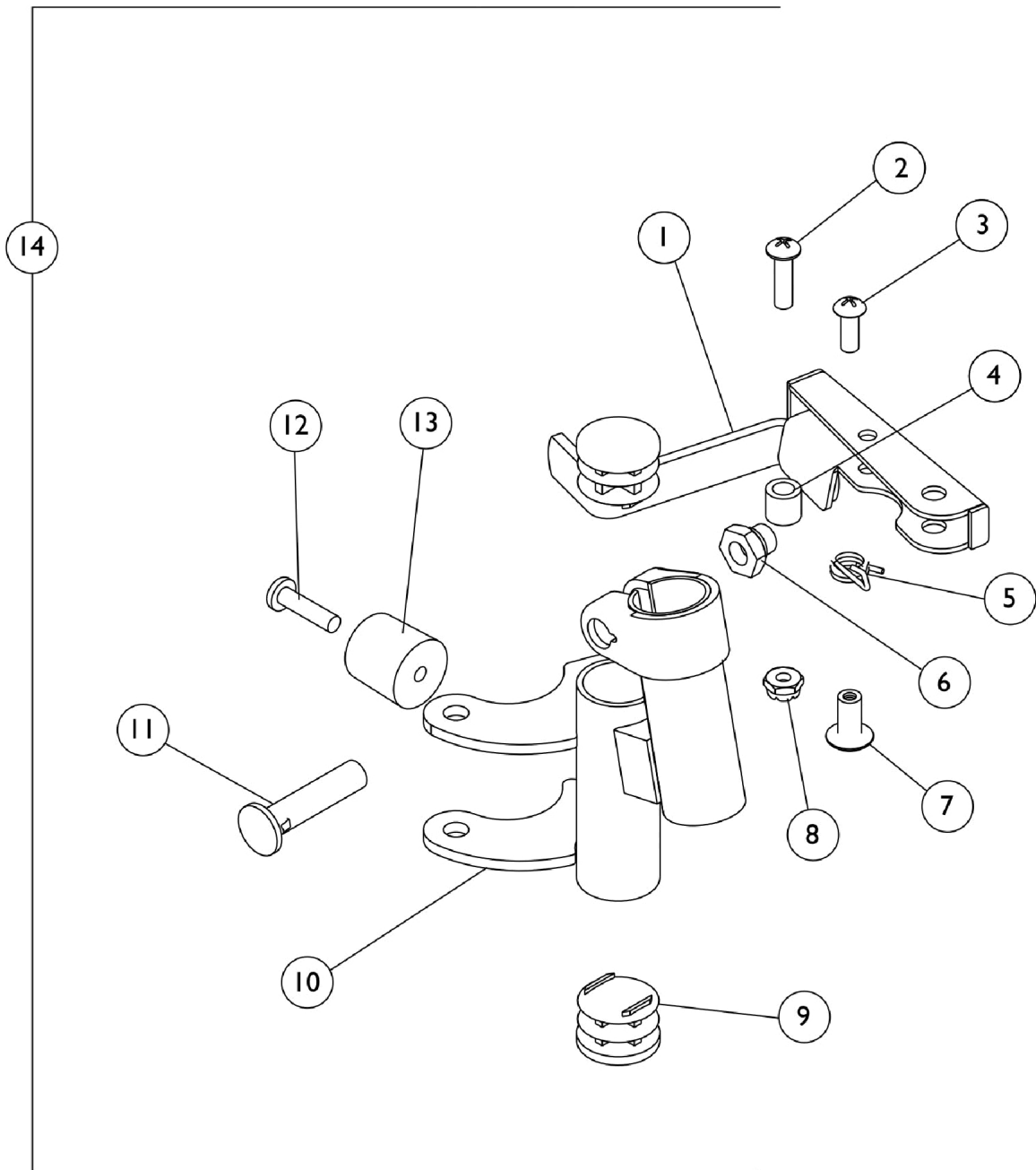


Footrest Support Assembly

H93M & H93M with FPP



Footrest Support Assembly H93M & H93M with FPP

Item Number	Note	Part Number	Description	Quantity Per	
				Package	Assembly
1	D	1035539	Handle, Release, Black - Right	1	1
1	D	1035540	Handle, Release, Black - Left	1	1
1	A,B,D	1033305-NLA	NLA - Handle, Release, Chrome - Right	1	1
1	A,B,D	1033306-NLA	NLA - Handle, Release, Chrome - Left	1	1
	G	1087698-NLA	NLA - Handle, Release, Chrome - Right	1	1
	G	1087699-NLA	NLA - Handle, Release, Chrome - Left	1	1
2		40163X008	Screw, Phillips Pan Head (#10-32 x 11/16")	1	1
3		40163X002	Screw, Phillips Round Head (#10-32 x 1/2")	1	1
4		47565X057	Bushing (7/32 x 3/8 x 11/32")	1	1
5		1008935	Spring, Release - Right	1	1
5		1008936	Spring, Release - Left	1	1
6		1107321	Nut, Low Cap (5/16"-24)	1	1
7		67005X000	Rivnut (#10-32)	1	1
8		60279X003	Locknut (#10-32)	1	1
9		1027095	Plug Button, Black (7/8")	1	2
10	E	1035141-NLA	NLA - Footrest Support, Chrome - Right	1	1
10	E	1035140-NLA	NLA - Footrest Support, Chrome - Left	1	1
10	F	1007113-NLA	NLA - Tube, Footrest Support, Hemi, Chrome - Right	1	1
10	F	1007114-NLA	NLA - Tube, Footrest Support, Hemi, Chrome - Left	1	1
11		11232X009	Bolt, Lug (5/16-24 x 1-3/8")	1	1
12		1030979	Screw, Phillips Pan Head Tap (#10-32 x 3/4")	1	1
13		1022874	Bumper	1	1
14	C	See Chart	Footrest Support Assembly - H93M & H93M with FPP	1	1

NOTE: A - When a front rigging is ordered for a 9000XT chair with clamp-on wheel locks, front rigging should be ordered through Invacare Specials due to a different release handle style.
B - For release handles after 8/1/02 and 9XT with clamp-on wheel lock.
C - Includes items 1-13.
D - Due to design change, release handles should be replaced in pairs for chairs manufactured before 10/1/00.
E - For use on H93M.
F - For use on H93M with FPP.
G - Not Shown. Order this item when ordering chair with Cyclical Drive only.

Footrest Support Assembly - H93M & H93M with FPP

Prior Model Number	Current Model Number	Chair Width	Right Side	Left Side
H93M	H93M	16-22"	1031243-NLA	1031244-NLA
H93M with FPP	H93M with FPP	14-22"	1035449-NLA	1035450-NLA