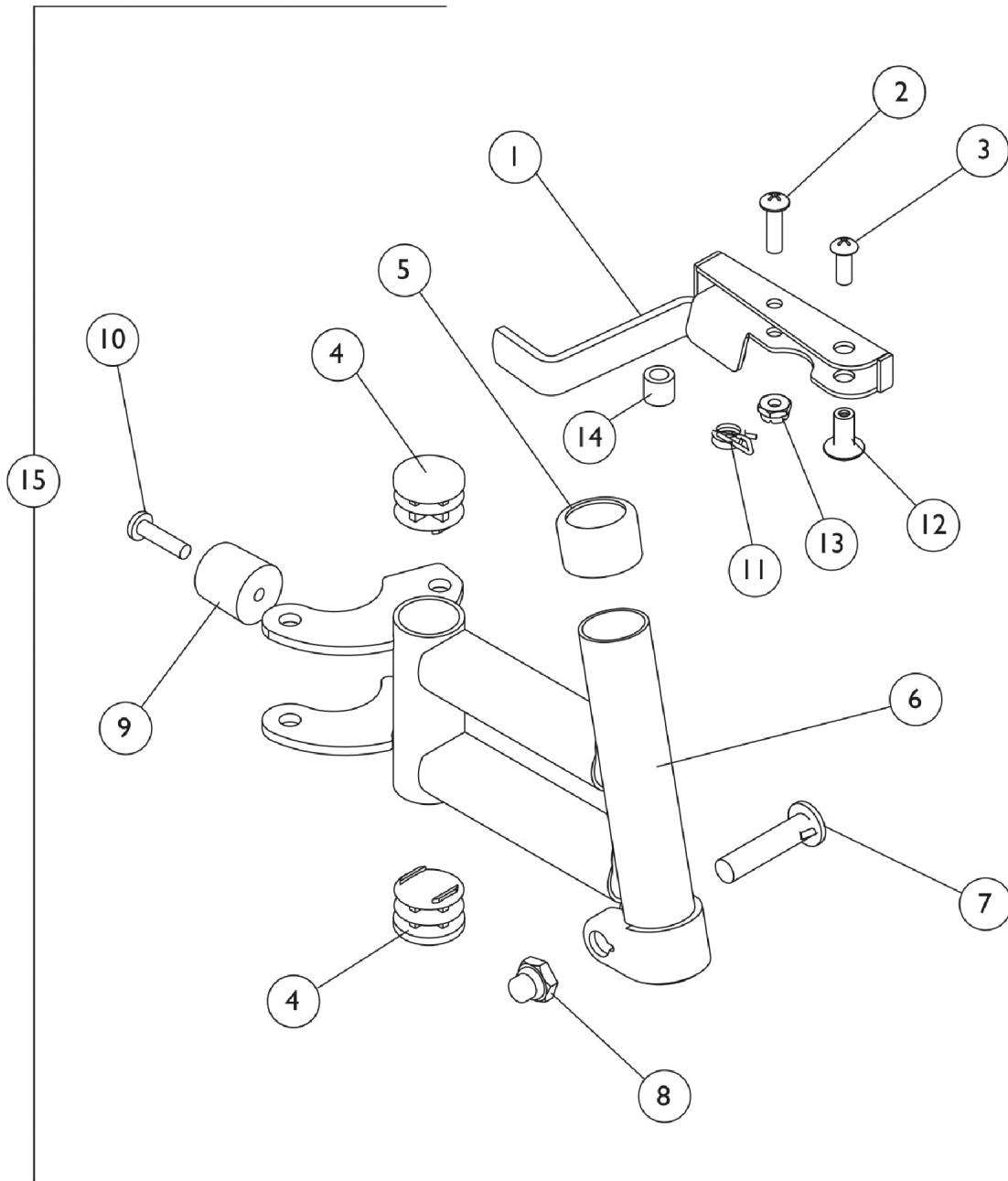


Footrest Support Assembly H93E



Footrest Support Assembly H93E

Item Number	Note	Part Number	Description	Quantity Per	
				Package	Assembly
1	C	1035539	Handle, Release, Black - Right	1	1
1	C	1035540	Handle, Release, Black - Left	1	1
1	A,B,C	1033305-NLA	NLA - Handle, Release, Chrome - Right	1	1
1	A,B,C	1033306-NLA	NLA - Handle, Release, Chrome - Left	1	1
	E	1087698-NLA	NLA - Handle, Release, Chrome - Right	1	1
	E	1087699-NLA	NLA - Handle, Release, Chrome - Left	1	1
2		40163X008	Screw, Phillips Pan Head (#10-32 x 11/16")	1	1
3		40163X002	Screw, Phillips Round Head (#10-32 x 1/2")	1	1
4		1027095	Plug Button, Black (7/8")	1	2
5		15680X012	Collar, Anti-Rattle (7/8")	1	1
6	F	1007123-NLA	NLA - Tube, Support, Footrest, Chrome - Right	1	1
6		1007124-NLA	NLA - Tube, Support, Footrest, Chrome - Left	1	1
7		11232X009	Bolt, Lug (5/16-24 x 1-3/8")	1	1
8		1107321	Nut, Low Cap (5/16"-24)	1	1
9		1022874	Bumper	1	1
10		1030979	Screw, Phillips Pan Head Tap (#10-32 x 3/4")	1	1
11		1008935	Spring, Release - Right	1	1
11		1008936	Spring, Release - Left	1	1
12		67005X000	Rivnut (#10-32)	1	1
13		60279X003	Locknut (#10-32)	1	1
14		47565X057	Bushing (7/32 x 3/8 x 11/32")	1	1
15	D	See Chart	Footrest Support Assembly - H93E	1	1

NOTE: A - For use on chairs after 8/1/02. Also, for use on 9000XT with clamp-on wheel lock.
 B - When front riggings are ordered for a 9000XT Chair with clamp-on wheel locks, the front riggings should be ordered through Invacare Specials due to a different release handle style.
 C - Due to design change, release handles should be replaced in pairs for chairs manufactured before 10/1/00.
 D - Includes items 1 thru 14.
 E - Not shown. Order this item when ordering chair with Cyclical Lever Drive only.
 F - Part #1007123 is no longer available individually. Order item 15 part #1031245 Footrest Support Assembly as a replacement.

Footrest Support Assembly - H93E

Prior Model Number	Current Model Number	Chair Width	Right Side	Left Side
H93E/S	H93E/S	16-22"	1031245-NLA	1031246-NLA