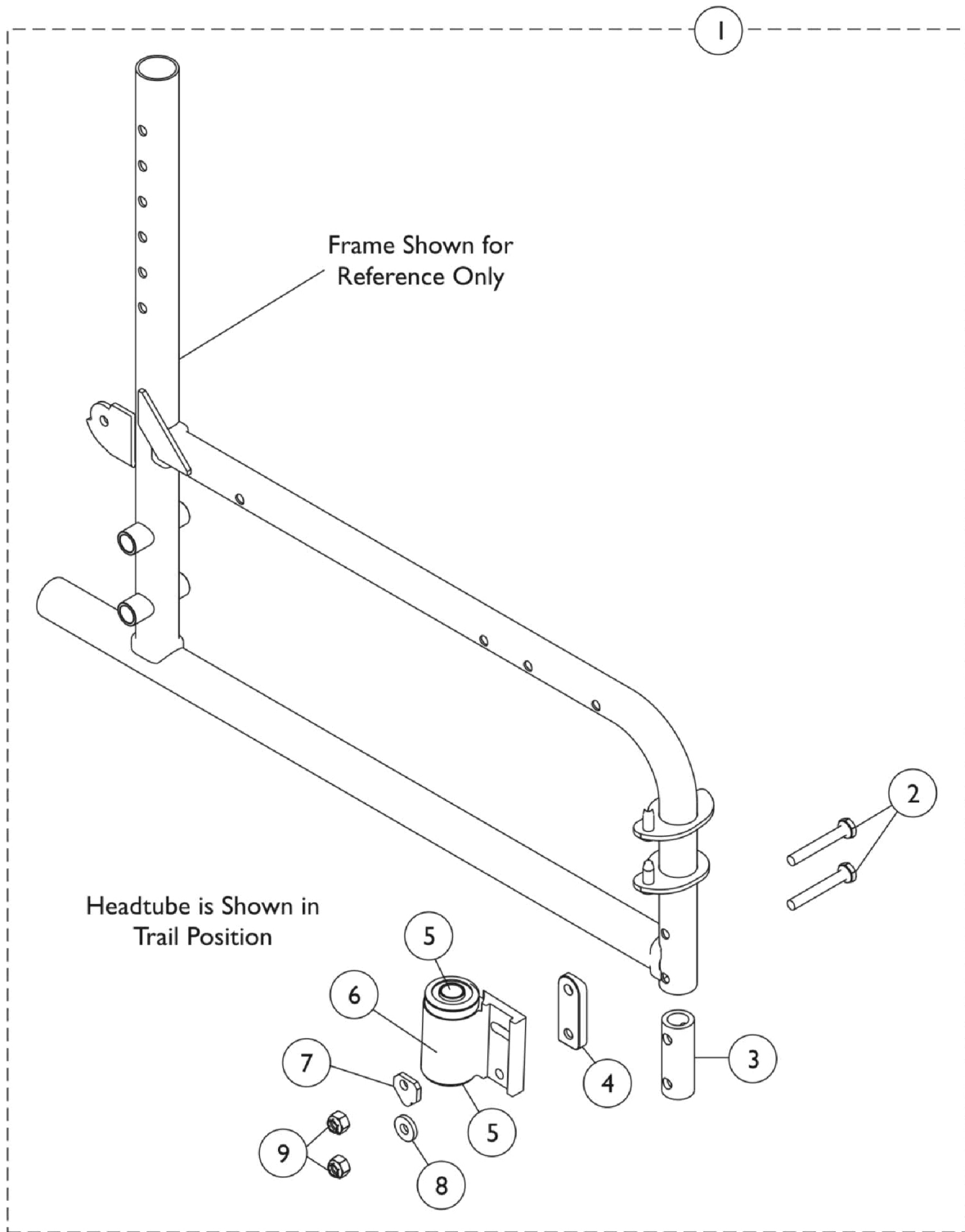


# Headtube Hardware, Adjustable

## 9000XT Option Only



## Headtube Hardware, Adjustable 9000XT Option Only

Item Number	Note	Part Number	Description	Quantity Per	
				Package	Assembly
1	A	1091074	Kit, Caster Headtube w/ Flanged Bearings and Hardware, Black (Pair)	1	1
2			Screw, Hex Head (1/4-28 x 1-3/4")	1	4
3			Tube, Insert	1	2
4			Spacer, Coved Headtube - Right	1	1
4			Spacer, Coved Headtube - Left	1	1
5			Bearing, Flange (1/2")	1	2
6			Headtube, Caster w/ Flanged Bearings, Black - Right	1	1
6			Headtube, Caster w/ Flanged Bearings, Black - Left	1	1
7			Cam, Headtube Adjustment	1	2
8	B	1113590	Washer (1/4 x 5/8 x 3/32")	1	2
9			Locknut (1/4-28)	1	4
1			Kit, Caster Headtube w/ Precision Bearings and Hardware, Black (Pair)	1	1
2			Screw, Hex Head (1/4-28 x 1-3/4")	1	4
3			Tube, Insert	1	2
4			Spacer, Coved Headtube - Right	1	1
4			Spacer, Coved Headtube - Left	1	1
5			Bearing (1/2" I.D. x 1-1/8" O.D.)	1	2
6			Headtube, Caster with Precision Bearings, Black - Right	1	1
6			NLA - Headtube, Caster with Precision Bearings, Black - Left	1	1
7			Cam, Headtube Adjustment	1	2
8			Washer (1/4 x 5/8 x 3/32")	1	2
9			Locknut (1/4-28)	1	4

NOTE: A - Includes items 2-9 and used on chairs ordered with the ADJC option.  
B - Includes items 2-9 and used on chairs ordered with the ADJCPB option.