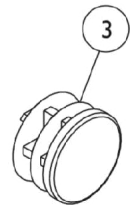
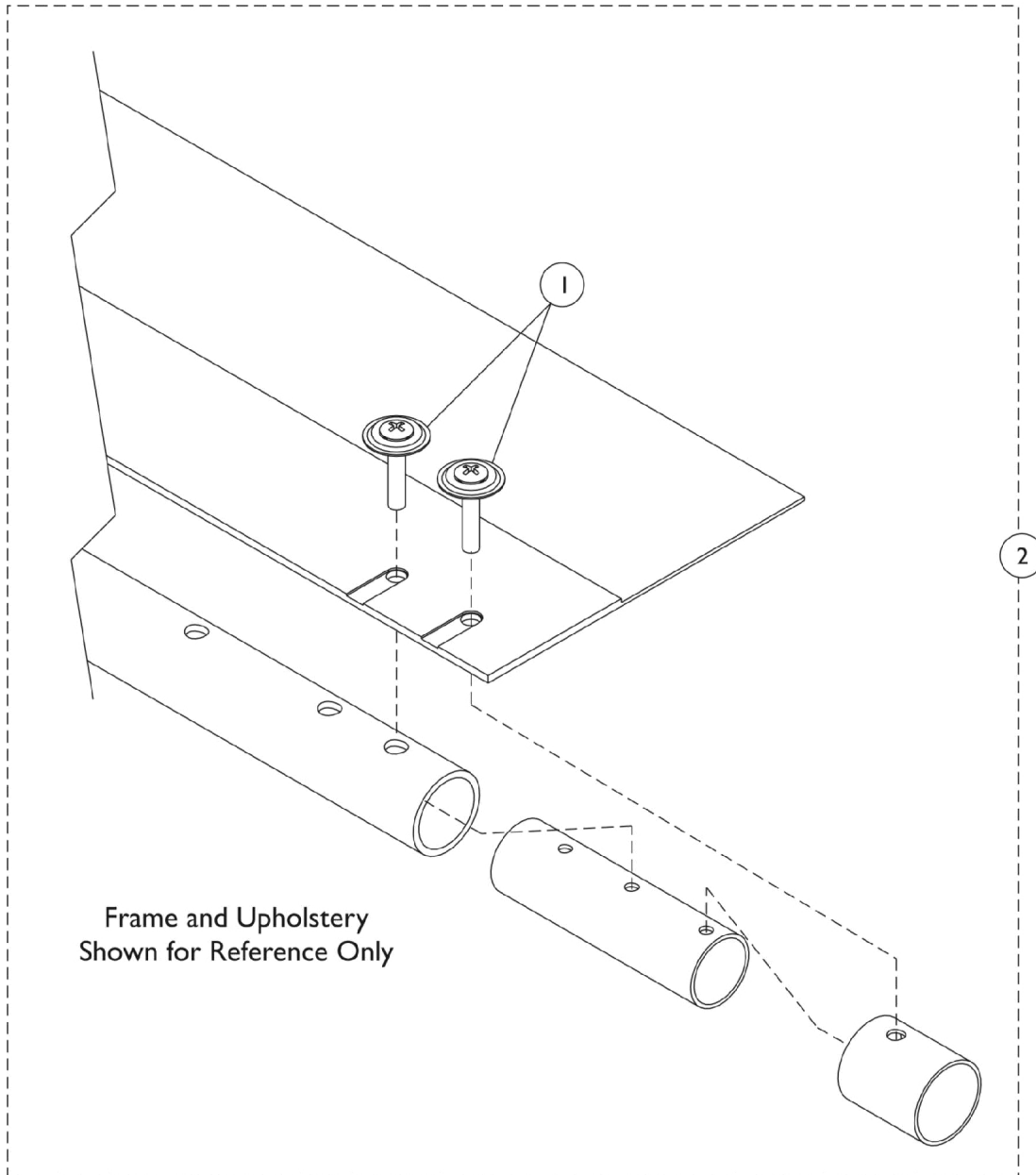


Seat Extension Kits



Seat Extension Kits

Item Number	Note	Part Number	Description	Quantity Per	
				Package	Assembly
1		1041541	Package, Screw Phillips Csunk Oval Head w/ Washer (#10-16 x 7/8") (12 ea.)	1	4
2		See Chart	Seat Extension Kits - 9000SL	1	1
2		See Chart	Seat Extension Kits - 9000XT	1	1
2		See Chart	Seat Extension Kits - 9000XT Recliner	1	1
2		See Chart	Seat Extension Kits - 9000XDT	1	1
3		1029501	Plug Button, Black (1")	1	2

9000 SL

Chair Style	Part Number	Description
For chairs built between 11/4/96 - 6/16/02	1038539	Seat Extension Kit (2")
For chairs built after 6/17/02	1112794	Seat Extension Kit (2")

NOTE: Standard crossbrace seat depth is 16 inches. Seat depths of 17" and 18" are achieved by the Seat Extension tubes.

9000 XT

Chair Size	Part Number	Description
14" Wide x 17" Deep	1035970	Seat Extension Kit (1")
14" Wide x 18" Deep	1035971	Seat Extension Kit (2")
15" Wide x 17" Deep	1035970	Seat Extension Kit (1")
15" Wide x 18" Deep	1035971	Seat Extension Kit (2")
16" Wide x 17" Deep	1035970	Seat Extension Kit (1")
16" Wide x 18" Deep	1035971	Seat Extension Kit (2")
17" Wide x 17" Deep	1035970	Seat Extension Kit (1")
17" Wide x 18" Deep	1035971	Seat Extension Kit (2")
18" Wide x 17" Deep	1035970	Seat Extension Kit (1")
18" Wide x 18" Deep	1035971	Seat Extension Kit (2")
19" Wide x 17" Deep	1038538 See Note(s) A	Seat Extension Kit (1")
19" Wide x 17" Deep	1118272 See Note(s) B	Seat Extension Kit (1")
19" Wide x 18" Deep	1038539 See Note(s) A	Seat Extension Kit (2")
19" Wide x 18" Deep	1112794 See Note(s) B	Seat Extension Kit (2")
20" Wide x 17" Deep	1038538 See Note(s) A	Seat Extension Kit (1")
20" Wide x 17" Deep	1118272 See Note(s) B	Seat Extension Kit (1")
20" Wide x 18" Deep	1038539 See Note(s) A	Seat Extension Kit (2")

Seat Extension Kits

9000 XT

Chair Size	Part Number	Description
20" Wide x 18" Deep	1112794 See Note(s) B	Seat Extension Kit (2")
22" Wide x 17" Deep	1038538 See Note(s) A	Seat Extension Kit (1")
22" Wide x 17" Deep	1118272 See Note(s) B	Seat Extension Kit (1")
22" Wide x 18" Deep	1038539 See Note(s) A	Seat Extension Kit (2")
22" Wide x 18" Deep	1112794 See Note(s) B	Seat Extension Kit (2")

NOTE: A - To be used on chairs manufactured before 8/6/04.
B - To be used on chairs manufactured after 8/5/04.

NOTE: Standard crossbrace seat depth is 16 inches. Seat depths of 17" and 18" are achieved by the Seat Extension tubes.

Seat Extension Kits

9000XT Recliner

Chair Style	Depth Size	Part Number	Description
For chairs built between 2/2/98 - 8/6/04	17" Deep	1038538	Seat Extension Kit (1")
For chairs built between 2/2/98 - 8/6/04	18" Deep	1038539	Seat Extension Kit (2")
For chairs built after 8/5/04	17" Deep	1118272	Seat Extension Kit (1")
For chairs built after 8/5/04	18" Deep	1112794	Seat Extension Kit (2")
w/Lift Package	17" Deep	1118272	Seat Extension Kit (1")
w/Lift Package	18" Deep	1112794	Seat Extension Kit (2")

NOTE: Standard crossbrace seat depth is 16 inches. Seat depths of 17" and 18" are achieved by the Seat Extension tubes.

9000XDT

Depth Size	Part Number	Description
17" Deep or 19" Deep	1123889	Seat Extension Kit (1")
18" Deep or 20" Deep	1123890	Seat Extension Kit (2")

NOTE: Standard crossbrace seat depth is 16 inches. Seat depths of 17" and 18" are achieved by the Seat Extension tubes.