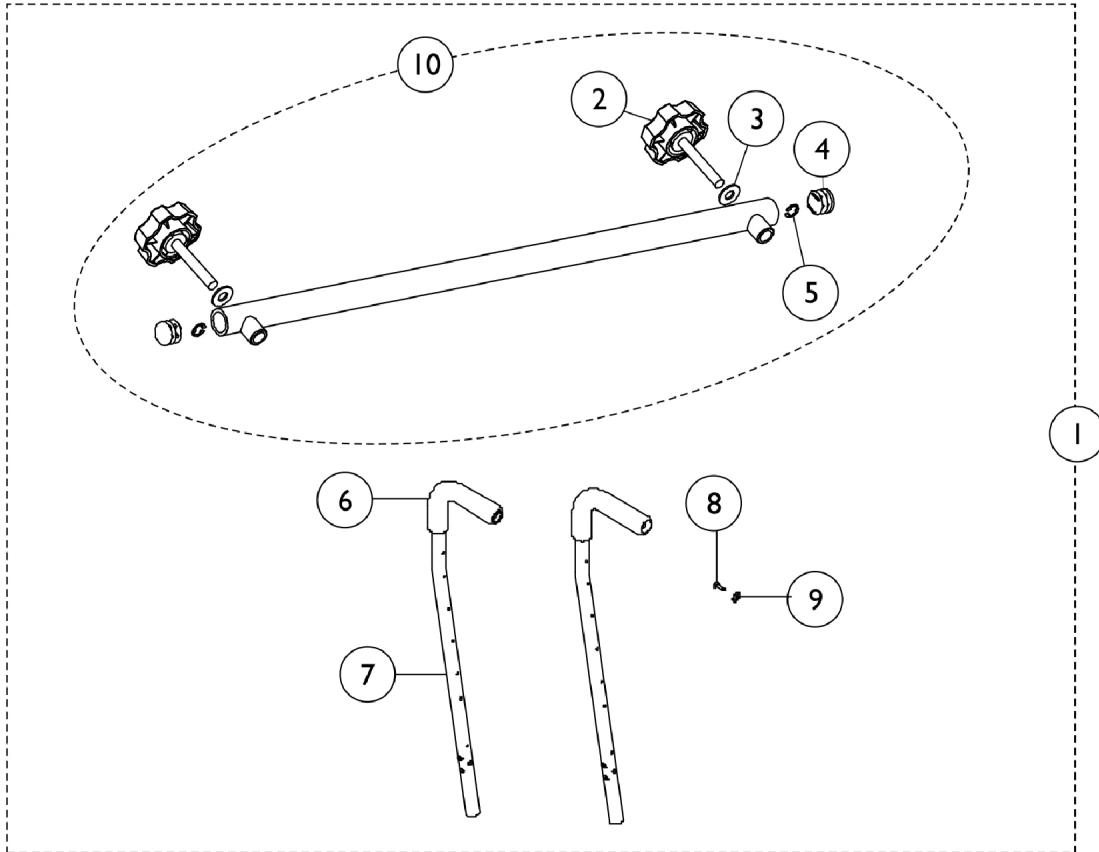


# Push Bar - T1483



## Push Bar - T1483

Item Number	Note	Part Number	Description	Quantity Per	
				Package	Assembly
1	A	1104118	Kit, Push Bar Assembly with Back Canes (20" W)	1	1
1	A	1104119	Kit, Push Bar Assembly with Back Canes (22" W)	1	1
1	A	1104120	Kit, Push Bar Assembly with Back Canes (24" W)	1	1
1	A	1104121	Kit, Push Bar Assembly with Back Canes (26" W)	1	1
1	A	1104122	Kit, Push Bar Assembly with Back Canes (28" W)	1	1
1	A	1104123	Kit, Push Bar Assembly with Back Canes (30" W)	1	1
2		1102297	Knob, Plastic with Stud, Black	1	2
3		1012371-NLA	NLA - Washer, Nylon (3/8 x 7/8 x 1/16")	1	2
4		1027095	Plug Button, Black (7/8")	1	2
5		1086930-NLA	NLA - Ring, Retaining (3/8")	1	2
6		1032245	Grip, Foam Hand (6-7/8" L)	1	2
7		1102224	Cane, Back with Insert, Black	1	2
8		1054687	Screw, Phillips Oval Head (#12-14 x 7/8")	1	25
9		1025707	Washer (1/4 x 3/4 x 3/32")	1	1
10	B	1102217	Push Bar Assembly (20" W)	1	1
10	B	1102218	Push Bar Assembly (22" W)	1	1
10	B	1102219	Push Bar Assembly (24" W)	1	1
10	B	1102220	Push Bar Assembly (26" W)	1	1
10	B	1102221	Push Bar Assembly (28" W)	1	1
10	B	1102222	Push Bar Assembly (30" W)	1	1
	C	1100904	Instruction Sheet	1	1

NOTE: A - This kit is for use on chairs without an existing push bar. The kit includes Items 2-10 and an instruction sheet.  
 B - Includes Items 2-5.  
 C - Not shown.