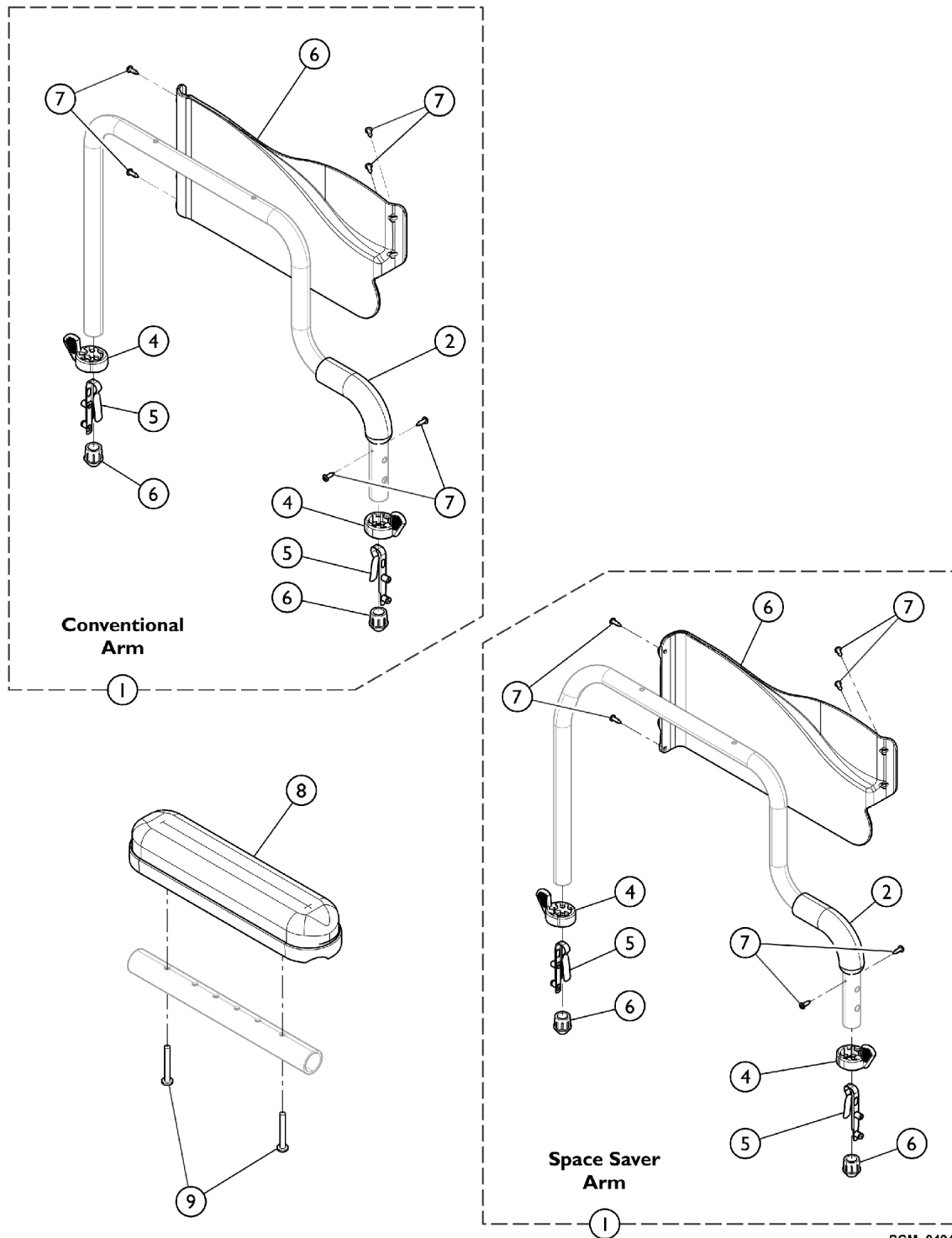


# Conventional/Space Saver Fixed Height Arms (XTRA)

Fixed Height arms are only available in desk length.



# Conventional/Space Saver Fixed Height Arms (XTRA)

Fixed Height arms are only available in desk length.

Item Number	Note	Part Number	Description	Quantity Per	
				Package	Assembly
1		See Chart	#9 Arm Assembly Heavy Duty Chairs	1	1
1		See Chart	#9 Arm Assembly Standard Chairs	1	1
2	A	1037719	Grip, Hand, Foam (6 1/2")	1	1
2	B	1037718	Grip, Hand, Foam (5 1/2")	1	1
3	C	1117365	Kit, Clothing Guard, Conventional, Desk Length w/ Screws and Decals (Pair)	2	1
3	C	1123307	Kit, Clothing Guard, Space Saver, Desk Length w/ Screws and Decals (Pair)	2	1
4		1015450	Handle, Quad Release	1	2
5		1018225	Spring, Torsion with Button Lock	1	2
6		1036484	Plug, Armrest, Black (3/4") (18GA)	1	2
7		1020022	Screw, Phillips Pan Head Tap (#6-20 x 3/8")	1	6
8	D	8881053570	Kit, Arm Pad w/ Screws, Desk Length (Pair)	2	1
9		1055949	Package, Screw, Phillips Pan Head (#10-32 x 1-3/8")	2	1

NOTE: A - Used with Space Saver Arms.  
 B - Used with Conventional Arms.  
 C - Clothing Guards not sold individually, includes Clothing Guard, Screws, and Decals.  
 D - Specify Upholstery Color U67 when ordering.

# Conventional/Space Saver Fixed Height Arms (XTRA)

Fixed Height arms are only available in desk length.

## #9 Arm Assembly

### Standard Chairs

Arm Style	15-18" Deep or Depth Range 10-16" to 13-19" Right - Painted	15-18" Deep or Depth Range 10-16" to 13-19" Left - Painted	19-22" Deep Right - Black	19-22" Deep Left - Black
Conventional	8881044815-NLA See Note(s) A	8881044816-NLA See Note(s) A	1108289-NLA See Note(s) A	1108290-NLA See Note(s) A
Space-Saver	8881056986 See Note(s) C, B	8881056987 See Note(s) B, C	1108293-NLA See Note(s) B	1108294-NLA See Note(s) B
NOTE: A - Due to Clothing Guard change, it is recommend (for chairs built Before 10/1/02) when only one Arm is requested the Clothing Guard Kit (p/n 1117365) be ordered also so that the arms will match. B - Due to Clothing Guard change, it is recommend (for chairs built Before 11/25/03) when only one Arm is requested the Clothing Guard Kit (p/n 1123307) be ordered also so that the arms will match. C - Must order the Hand Grip separately.				

## #9 Arm Assembly

### Heavy Duty Chairs

Arm Style	17-19" Deep Right - Black	17-19" Deep Left - Black	20-22" Deep Right - Black	20-22" Deep Left - Black
Conventional	1108289-NLA See Note(s) A	1108290-NLA See Note(s) A	1108291-NLA See Note(s) A	1108292-NLA See Note(s) A
Space-Saver	1108293-NLA See Note(s) B	1108294-NLA See Note(s) B	1108295-NLA See Note(s) B	1108296-NLA See Note(s) B
NOTE: A - Due to Clothing Guard change, it is recommend (for chairs built Before 10/1/02) when only one Arm is requested the Clothing Guard Kit (p/n 1117365) be ordered also so that the arms will match. B - Due to Clothing Guard change, it is recommend (for chairs built Before 11/25/03) when only one Arm is requested the Clothing Guard Kit (p/n 1123307) be ordered also so that the arms will match.				