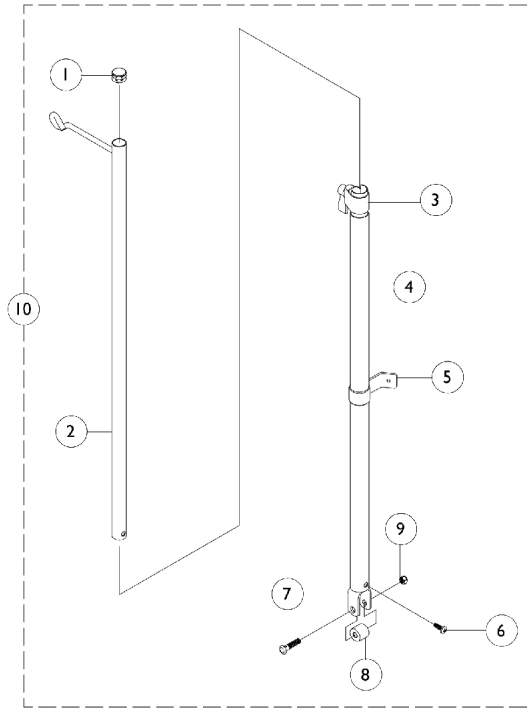


I.V. Rod - Telescoping - 1322

DLX, EX, SX & Tracer Titan



Item Number	Note	Part Number	Description	Quantity Per	
				Package	Assembly
1		1027095	Plug Button, Black (7/8")	1	1
2		04701X028	Rod, I.V.	1	1
3		12592X000-NLA	NLA - Adjustment Lock Assembly, Chrome	1	1
4		04701X031	Rod, I.V. Support, Non-Recliner	1	1
5		04701X032-NLA	NLA - Bracket, Mounting, Chrome	1	1
6		21243X000-NLA	NLA - Screw, Phillips Pan Head (#6-20 x 3/8")	1	1
7		11232X009	Bolt, Lug (5/16-24 x 1-3/8")	1	1
8		47324X011	Bushing, Pivot (5/16 x 7/8 x 3/4")	1	1
9		1107321	Nut, Low Cap (5/16"-24)	1	1
10	A	1067766-NLA	NLA - Rod, I.V., Telescoping, Non-Recliner	1	1
	B,C	1067765-NLA	NLA - Instruction Sheet, Non-Recliner	1	1

NOTE: A - Includes items 1-9 and instruction sheet.
 B - Not Shown.
 C - Item is no longer available from the Invacare Service Parts Department. Refer to the Invacare Website under "Product Literature Search". Enter the part number in the "Keywords" field and download a free PDF version copy.