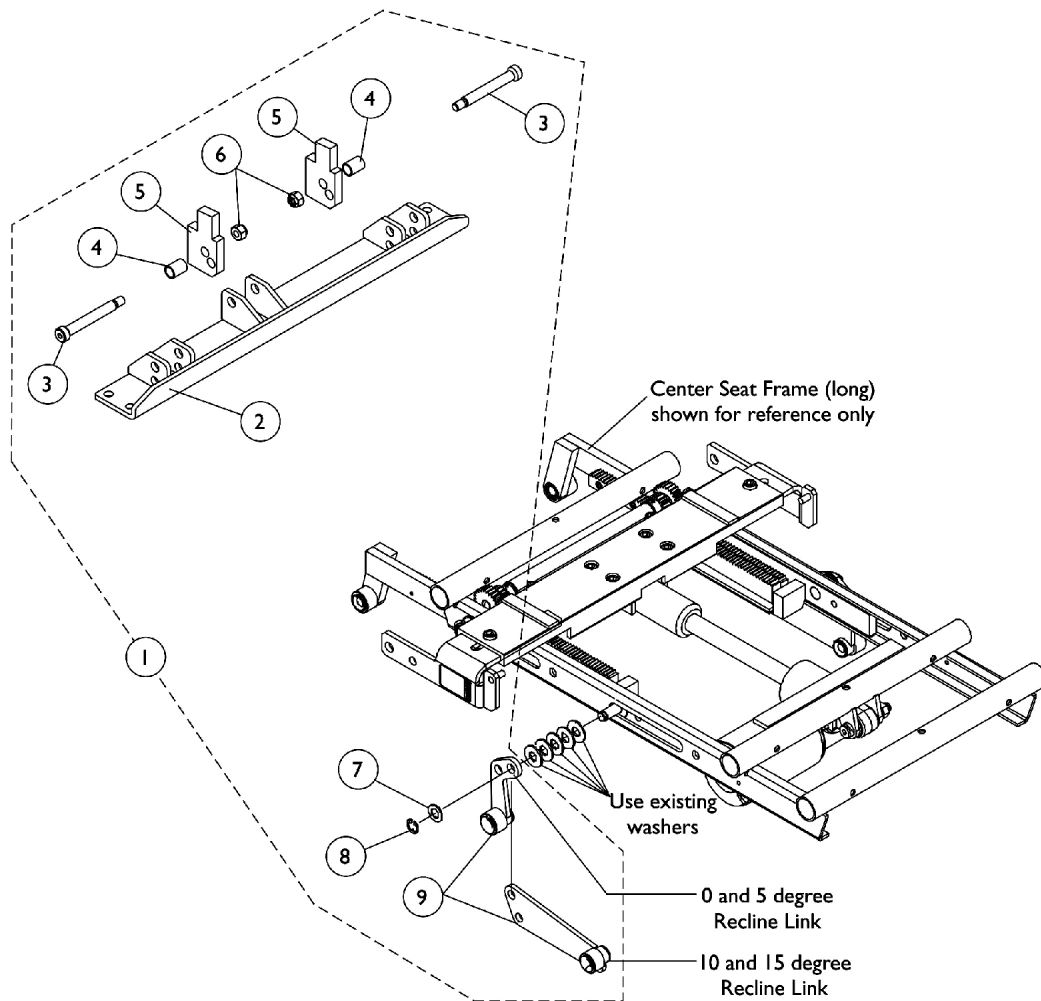
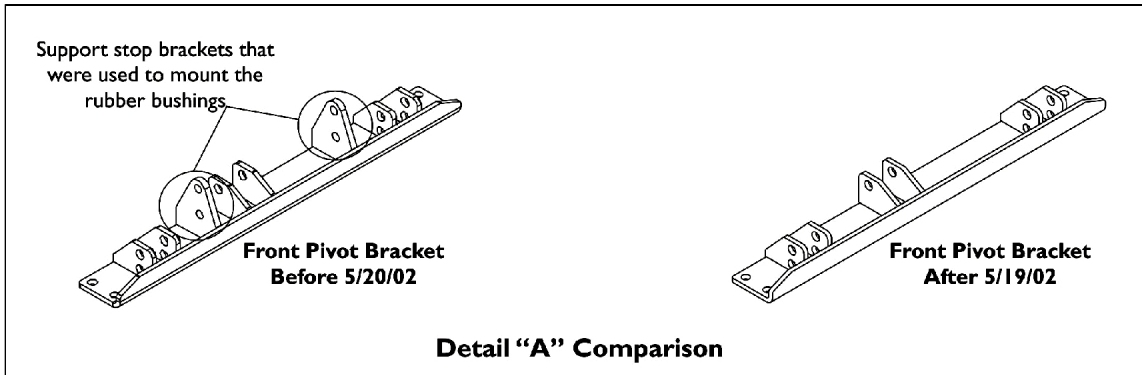


Front Pivot Bracket & Links Kit

(For Seating Systems Manufactured Before 5/20/02)

NOTE: To know when a front pivot bracket made before 5/20/02 has already been replaced, ask the Customer to verify if the support stop brackets that mount the rubber bushings are missing. See comparison in detail "A" shown.



Front Pivot Bracket & Links Kit (For Seating Systems Manufactured Before 5/20/02)

NOTE: To know when a front pivot bracket made before 5/20/02 has already been replaced, ask the Customer to verify if the support stop brackets that mount the rubber bushings are missing. See comparison in detail "A" shown.

Item Number	Note	Part Number	Description	Quantity Per	
				Package	Assembly
1	A,B	1112693-NLA	NLA - Kit, Front Pivot Bracket and Links	1	1
2			NLA - Bracket, Pivot, Front, Black	1	1
3			NLA - Bolt, Shoulder (3/8 x 2-1/2")	1	2
4			NLA - Bushing, Black (7/16 x 1/2 x 11/16")	1	2
5			NLA - Block, Black Tilt Angle	1	2
6			Locknut (5/16-18)	1	2
7			Washer, Flat (3/8 x 11/16 x 1/16")	1	2
8			NLA - Ring, Retaining (3/8")	1	2
9			NLA - Link, Recline 0 and 5 Degree Seat Tilt, Black - Right	1	1
9			NLA - Link, Recline 0 and 5 Degree Seat Tilt, Black - Left	1	1
9			NLA - Link, Recline 10 and 15 Degree Seat Tilt, Black - Right	1	1
9			NLA - Link, Recline 10 and 15 Degree Seat Tilt, Black - Left	1	1
			NLA - Instuction Sheet, Replacing Front Pivot or Obtaining 0 degree Seat Tilt on Recline Only	1	1
<p>NOTE: A - Kit includes items 2-9 and the instruction sheet that is not shown. Kit is used for seating systems manufactured before 5/20/02. B - Part number 1098338 is no longer available from the Invacare Service Parts Department. Refer to the Invacare Website under "Product Literature Search". Enter the part number in the "Keywords" field and download a free PDF version copy.</p>					