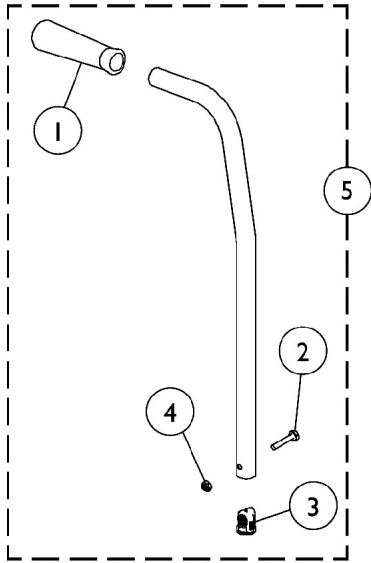
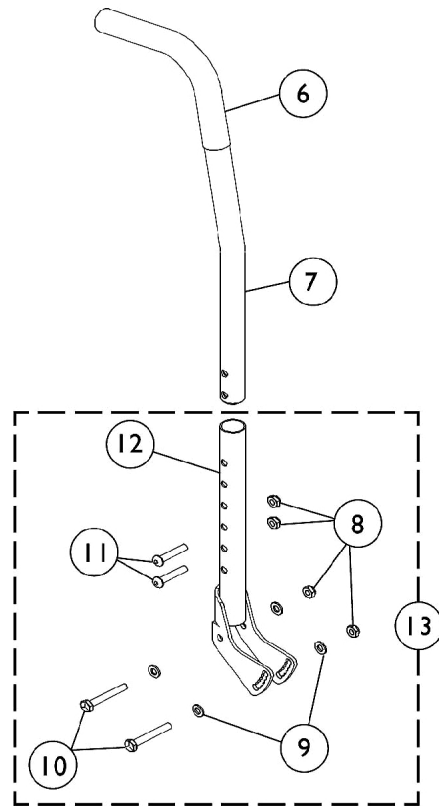


# Back Canes and Hardware

## Adjustable Height and Adjustable Angle



**Adjustable Height Back Cane**  
**R32 and R32LX**



**Adjustable Angle Back**  
standard on models  
**R50LX/R51/R51LX/R51LXP**

## Back Canes and Hardware Adjustable Height and Adjustable Angle

Item Number	Note	Part Number	Description	Quantity Per	
				Package	Assembly
1		1057248	Grip, Hand, Foam (4-3/4")	1	1
2		1070759	Screw, Hex Head (1/4-20 x 1-1/2")	1	1
3		1056551	Insert	1	1
4		7930307-NLA	NLA - Locknut (1/4-20")	25	3
5	A	1107655-NLA	NLA - Back Cane Assembly	1	1
6		1006229	Grip, Foam (8")	1	1
7		1028372	Back Cane Assembly, 10 Degree Bend	1	1
8		7930323-NLA	NLA - Package, Locknut (1/4-20)	25	4
9		1026907	Washer (1/4 x 1/2 x 1/16")	1	4
10		1024793-NLA	NLA - Screw, Hex Head (1/4-20 x 1-3/4")	1	2
11		1008432	Screw, Socket Button Head (1/4-20 x 1-1/4")	1	2
12		1108621-NLA	NLA - Bracket with Adjustable Back Tube, Black	1	1
13	B	1107668-NLA	NLA - Adjustable Angle Back Hardware (1 pair)	2	1

NOTE: A - 16-18" Back Height  
B - Includes Items 8-12.