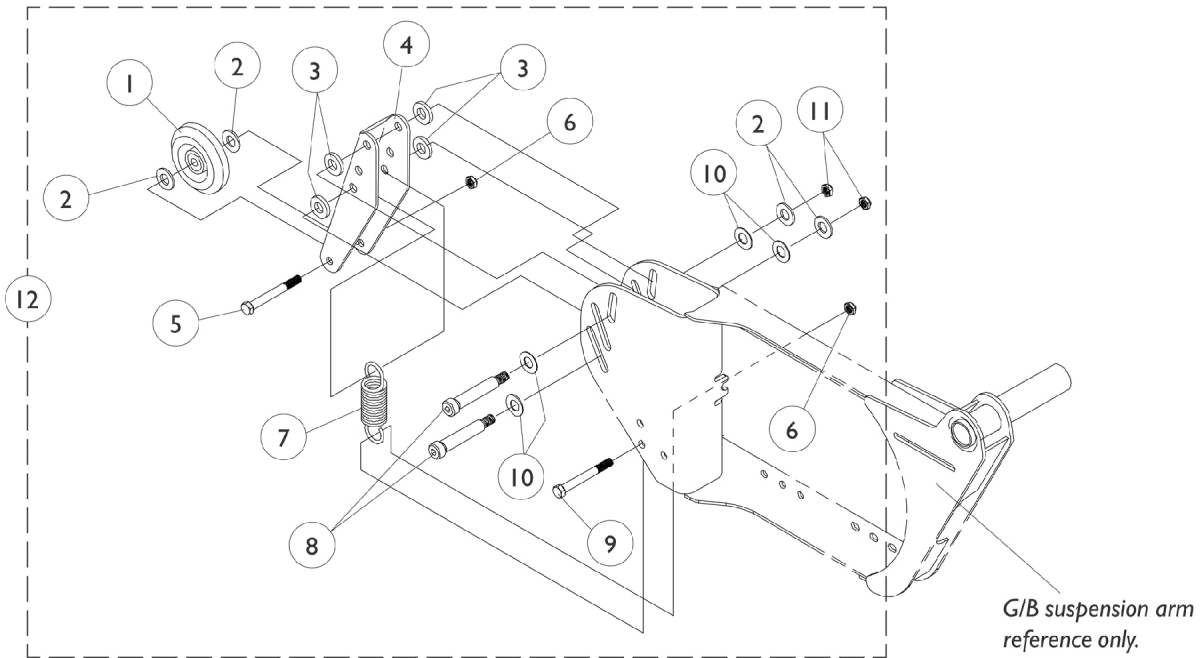


Active 3" Anti-Tip Wheel Assembly Gearless/Brushless

NOTE: Gearless/ Brushless motors were made available on-chair as an option for Storm Arrow, Ranger X and Torque 11/2/98. On 7/1/99 Gearless/ Brushless motors became standard for Storm Arrow only.



Item Number	Note	Part Number	Description	Quantity Per	
				Package	Assembly
1		1032190-NLA	NLA - Wheel Assembly (3" x 1")	1	2
2		1025704	Washer, Flat (5/16 x 5/8 x 1/16")	1	8
3		1078208-NLA	NLA - Washer, Nylon (25/64 x 23/32 x 19/64")-Black	1	8
4		1079239-NLA	NLA - Bracket, Anti-Tipper	1	2
5		1044939-NLA	NLA - Screw, Hex Head (5/16-18 x 1-3/4")	1	2
6		1028769	Locknut (5/16-18)	1	4
7		1070382-NLA	NLA - Spring, Extension (1 x 3-1/2" L)	1	2
8		1070411-NLA	NLA - Bolt, Shoulder (3/8 x 2-1/2")	1	4
9		1042486	Screw, Hex Head (5/16-18 x 2-3/4")	1	2
10		1049527	Washer, Nylon (3/8 x 3/4 x 1/16")	1	8
11		1026158	Locknut (5/16-18)	1	4
12	A	1078244-NLA	NLA - Anti-Tip Assembly, Active, GB (3") (Pair)	2	1

NOTE: A - Includes items 1-11