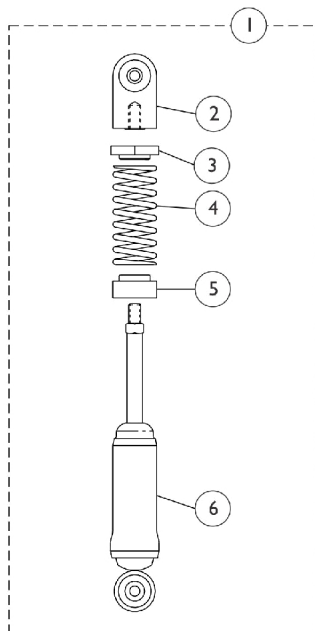
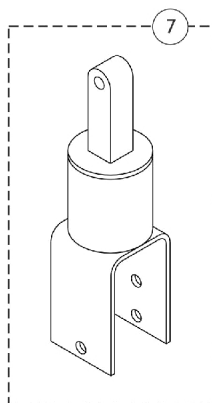


# Shock Absorbers

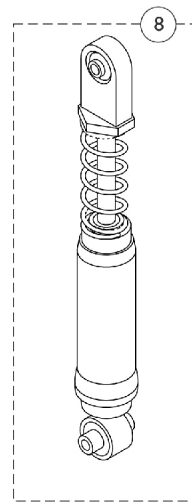
**NOTE: Gearless/ Brushless motors were made available on-chair as an option for Storm Arrow, Ranger X and Torque 11/2/98. On 7/1/99 Gearless/ Brushless motors became standard for Storm Arrow only.**



**Standard with  
Arrow and Torque SP (H.D.)  
and  
Optional with  
Torque, Torque SP and RX**



**Standard with  
Torque, Torque SP and RX**



**(MWD)**

Item Number	Note	Part Number	Description	Quantity Per	
				Package	Assembly
1	A,C	1039660	Shock Assembly, (RWD) Heavy Duty	1	1
1	A,D	1041419-NLA	NLA - Shock Assembly, (RWD) Standard	1	1
2		1041431	Shock Eyelet Assembly	1	1
3		1054481-NLA	NLA - Retainer, Shock Spring, Upper	1	1
4	C	1043596-NLA	NLA - Spring, Shock, Heavy Duty	1	1
4	D	1043595-NLA	NLA - Spring, Shock, Standard	1	1
5		1042466-NLA	NLA - Retainer, Shock Spring, Lower	1	1
6		1039659-NLA	NLA - Absorber, Shock	1	1
7		1050177-NLA	NLA - Element, Rubber	1	1
8	B,C	1070371-NLA	NLA - Shock Assembly, (MWD) Heavy Duty	1	1
8	B,D	1070370-NLA	NLA - Shock Assembly, (MWD) Standard	1	1

**NOTE:** A - Includes items 2 - 6.  
 B - Due to the spring compression, MWD shock absorber is not saleable as individual components.  
 C - Heavy duty 400 lb limit or 300 lb limit with Gearless/Brushless GB.  
 D - Standard 250 lb limit.

**NOTE:** See shock suspension mounting hardware page to find shock absorber attaching hardware.