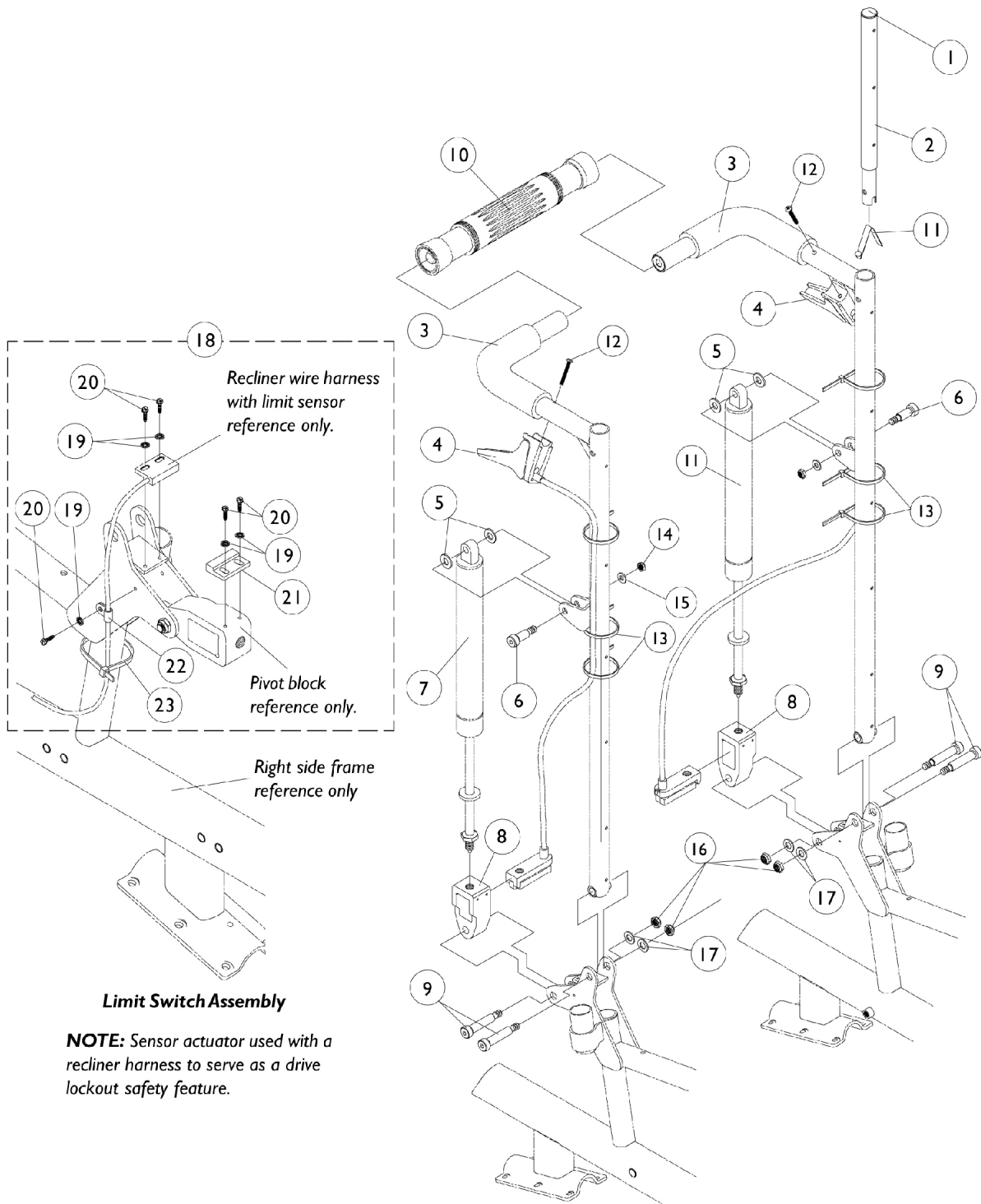


Recliner Back Assembly



Recliner Back Assembly

Item #3 - Back Cane with Grip

Back Height	14" W Right	14" W Left	16" W Right	16" W Left	18 - 20" W Right	18 - 20" W Left
18" H	1053272-NLA	1053273-NLA	1052079	1052080	1052089	1052090
20" H	1053274-NLA	1053275-NLA	1052081	1052082	1052091	1052092
22" H	1053276-NLA	1053277-NLA	1052083	1052084	1052093	1052094
24" H	1053278-NLA	1053279-NLA	1052085	1052086	1052095	1052096
26" H	1053280-NLA	1053281-NLA	1052087	1052088	1052097	1052098

Recliner Back Assembly

Item Number	Note	Part Number	Description	Quantity Per	
				Package	Assembly
1		1027095	Plug Button, Black (7/8")	1	2
2		1052997-NLA	NLA - Headrest Tube Assembly, Black - Right	1	1
2		1052998-NLA	NLA - Headrest Tube Assembly, Black - Left	1	1
3		See Chart	Item #3 - Back Cane with Grip	1	1
4	B,F	1050214	Cable with Trigger	1	2
4	B,G	1050215	Cable with Trigger	1	2
4	B,H	1050216	Cable with Trigger	1	2
5		1026032	Washer, Nylon (11/32 x 11/16 x 1/16")	1	4
6		1050153	Screw, Shoulder Hex Socket Head (5/16 x 7/8", 1/4-20)	1	2
7	D	1050154	Cylinder, Lock, Recline	1	2
7	E	1050306	Cylinder, Lock	1	2
8		1050136	Pivot, Block	1	2
9		1062604	Screw, Shoulder Hex Socket (3/8 x 1-1/4", 5/16-18)	1	4
10		1050293	Bar, Spreader, Black (14-20" W)	1	1
11		1024713	Spring, Torsion w/ Button	1	2
12		1025714	Screw, Phillips Pan Head (#10-32 x 1-1/8")	1	1
12	C	1091417-NLA	NLA - Screw, Phillips Pan Head (#10-24 x 1-1/4")	1	2
13		1021260	Tie Wrap (5-5/8" L)	1	6
14		1025736	Locknut (1/4-20)	1	1
15		1026907	Washer (1/4 x 1/2 x 1/16")	1	2
16		1026158	Locknut (5/16-18)	1	4
17		1025704	Washer, Flat (5/16 x 5/8 x 1/16")	1	4
18	A	1062774-NLA	NLA - Switch, Limit, Assembly	1	1
19		1008525-NLA	NLA - Washer, Internal Tooth Lock (#4-40)	1	5
20		1025116-NLA	NLA - Screw, Slotted Hex Washer Head Tap (#4-3/8")	1	5
21		1024001	Sensor, Actuator Switch	1	1
22		1050310-NLA	NLA - Clamp, Cable	1	1
23		1021260	Tie Wrap (5-5/8" L)	1	1

NOTE: A - Includes Items 19-23
 B - When ordering cable assembly #1050215 or #1050216 for chairs made before 8/4/99 or #1050214 for chairs made before 2/1/00, item 12 #1091417 must be ordered as well.
 C - Lever fastener changed 8/4/99 from a "10-32 threaded insert" to a "10-24 tinnerman nut" for item 4 #1050215 and #1050216 and 2/1/00 for #1050214.
 D - Ranger II Basic - Standard 250 lb. maximum capacity.
 E - Ranger II Standard - Heavy Duty 300 lb. maximum capacity.
 F - 26" High Canes
 G - 22-24" High Canes
 H - 18 and 20" High Canes