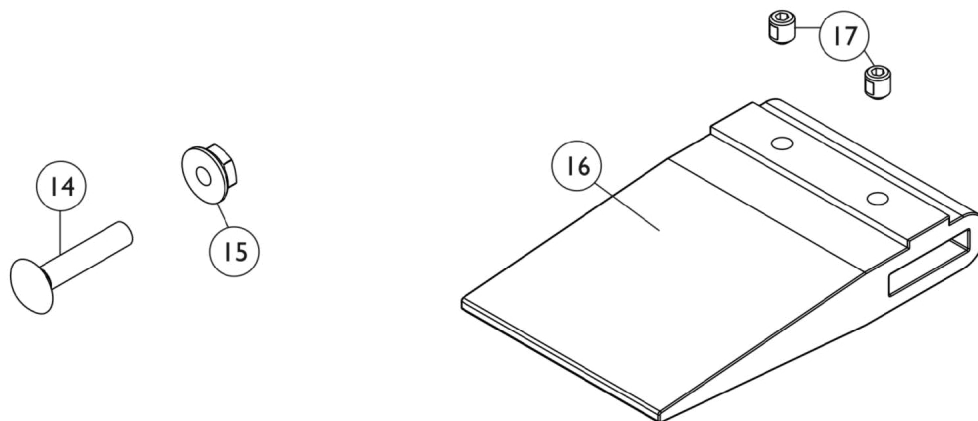
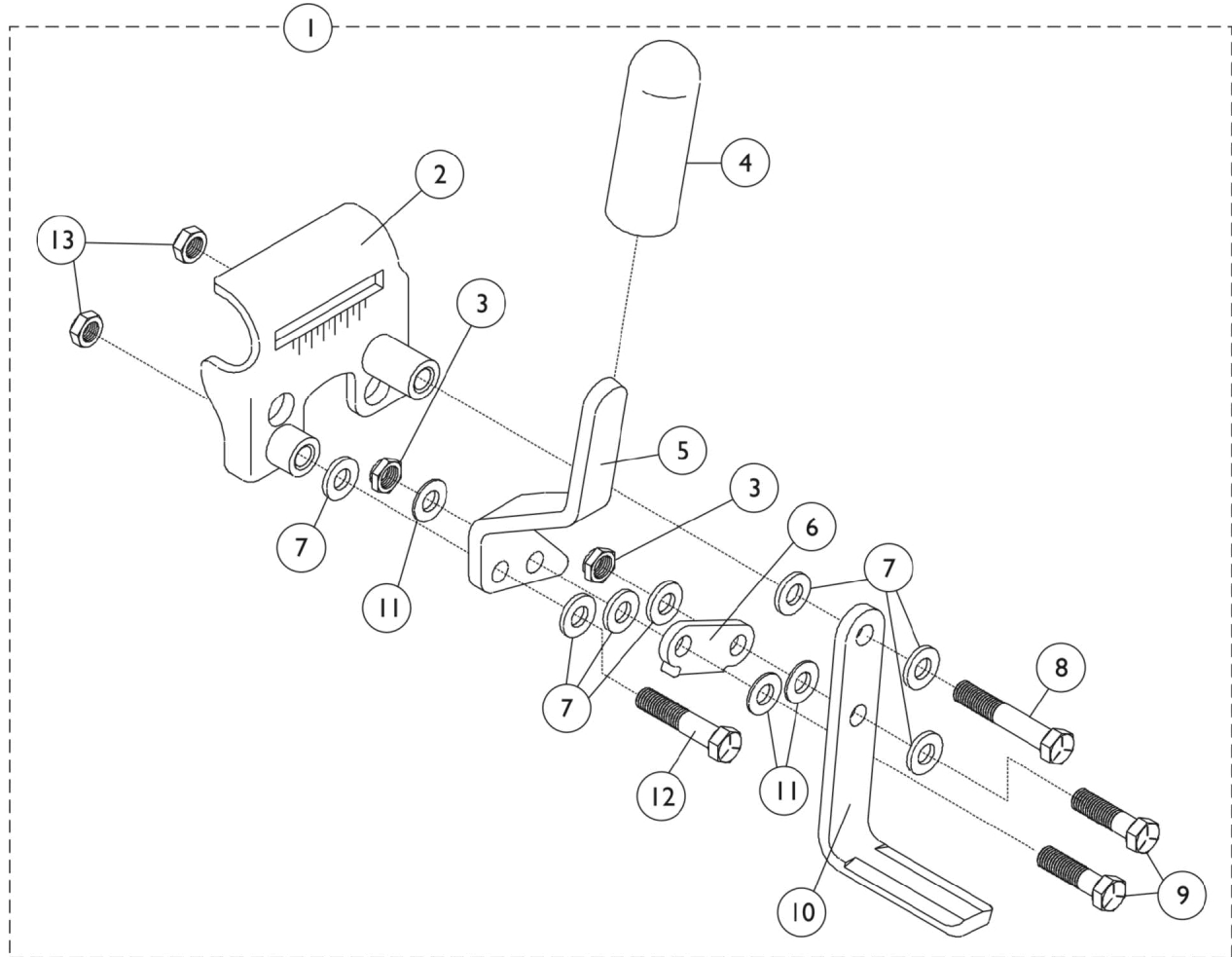


Link-Pivot Style Wheel Locks

Removable Arm - Hemi

NOTE: Due to the possibility of various manufacturing dates for Tracer IV Wheelchairs built with a serial # starting with "03H" or "03I", replacement parts will need to be ordered thru an Invacare Parts Specialist at 1-800-333-6900.



Link-Pivot Style Wheel Locks

Removable Arm - Hemi

NOTE: Due to the possibility of various manufacturing dates for Tracer IV Wheelchairs built with a serial # starting with "03H" or "03I", replacement parts will need to be ordered thru an Invacare Parts Specialist at 1-800-333-6900.

Item Number	Note	Part Number	Description	Quantity Per	
				Package	Assembly
1	A,E	1045849-NLA	NLA - Wheel Lock Assembly, Hemi, Pull to Lock, Black - Right	1	1
1	A,E	1045850-NLA	NLA - Wheel Lock Assembly, Hemi, Pull to Lock, Black - Left	1	1
1	A	1101454	Wheel Lock Assembly, Pull to Lock, Black - Right	1	1
1	A	1101455	Wheel Lock Assembly, Pull to Lock, Black - Left	1	1
2	B	1016037-NLA	NLA - Bracket, Mounting, Chrome - Right	1	1
2	B	1016038-NLA	NLA - Bracket, Mounting, Chrome - Left	1	1
2	C	1045847-NLA	NLA - Bracket, Mounting, Chrome - Right	1	1
2	C	1045848-NLA	NLA - Bracket, Mounting, Chrome - Left	1	1
3		60320X000	Locknut (1/4-28)	1	2
4		47376X024	Tip, Rubber Wheel Lock Handle, Black	1	1
5		1016590-NLA	NLA - Handle, Pull, Hemi, Chrome - Right	1	1
5		1016591-NLA	NLA - Handle, Pull, Hemi, Chrome - Left	1	1
6		1016592-NLA	NLA - Link, Chrome	1	1
7		1010398	Washer, Nylon (1/4 x 1/2 x 1/16")	1	7
8	B	1007017-NLA	NLA - Screw, Hex Head (1/4-20 x 1-1/4")	1	1
8	C	16720X004	Screw, Hex Head (1/4-20 x 1-1/2")	1	1
9		60274X012-NLA	NLA - Screw, Hex Head (1/4-28 x 3/4")	1	2
10		1015443-NLA	NLA - Shoe	1	1
11		40157X016-NLA	NLA - Washer (1/4 x 1/2 x 1/16")	1	3
12	B	16720X004	Screw, Hex Head (1/4-20 x 1-1/2")	1	1
12	C	1007017-NLA	NLA - Screw, Hex Head (1/4-20 x 1-1/4")	1	1
13		60275X000	Locknut (1/4-20)	1	2
14		16721X000	Locknut (1/4-20)	1	1
15		1011479	Bolt, Carriage (1/4-20 x 1-1/4")	1	1
16	D	1016980	Spacer, Wheel Lock Shoe (2-63/64")	1	1
16	D	1024431	Spacer, Wheel Lock Shoe (1-45/64")	1	1
17	D	1008438	Screw, Set Socket Cup Point (#8-32 x 3/16")	1	2

NOTE: A - Includes items 2-13.
 B - Before 5/94.
 C - After 4/94.
 D - These items are needed when 20" or 22" rear wheels are on the chair. These parts are not included with wheel lock.
 E - NLA. See part numbers 1101454 and 1101455 as replacements.