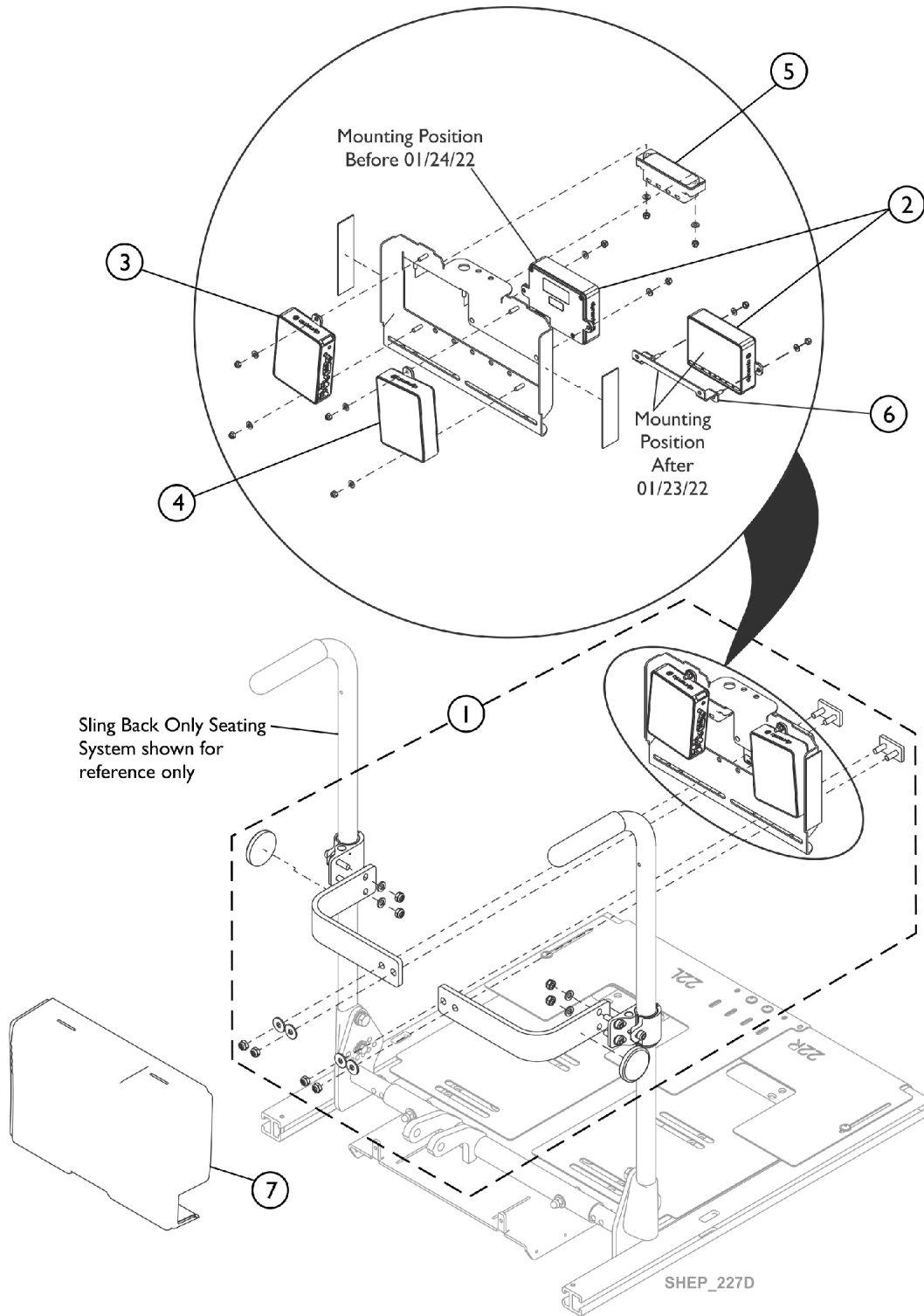


Backrest Bracket Mounting Hardware, Sling Back Only for - DLX-ACT400, DLX-IN500, DLX-OUT500, GLM-CONX4



Backrest Bracket Mounting Hardware, Sling Back Only for - DLX-ACT400, DLX-IN500, DLX-OUT500, GLM-CONX4

Item Number	Note	Part Number	Description	Quantity Per	
				Package	Assembly
1		60102477	Kit, Backrest Bracket Mounting Hardware, Sling Back for - DLX-ACT400, DLX-IN500, GLM-CONX4	1	1
2		60102475	Kit, LiNX 4-Channel Actuator Module (DLX-ACT400)	1	1
3	D	60102474	Kit, LiNX DLX-IN500 Input Module (INPUT)	1	1
4	B,C	60108452	Kit, LiNX DLX-OUT500 Output Module (OUT500)	1	1
5		60102473	Kit, LiNX CONX4 4-way Expansion Block	1	1
6	E	60132728	Kit, Bracket Assembly, LiNX, Black	1	1
7		60102472	Kit, Shroud Cover, Module	1	1
	A	60102523	Kit, Sip-N-Puff, 16" Fixed (PKG32666) Includes: (3) Air Tube Straws, (2) Saliva Traps, Tubing, Pivot Shaft/Flexible Metal Gooseneck Assembly, and Extruded Figure "8" Clamp to fit 7/8" Wheelchair Frame Tubing. Extruded Back Cane Adapter Clamp.	1	1

NOTE: A - Not Shown
 B - Item #4 includes LiNX DLX-OUT500 Output Module, 2 ea. Washer (M4 4.3 x 9 x .8), 2 ea. Locknut (M4), 1 ea. LiNX Bus Cable (PWH) 300mm 11-13/16" (GLM-BUS030)
 C - Before ordering a new DLX-OUT500 Module, contact Invacare Technical Services for assistance regarding NOTE located below.
 D - Item #3 LiNX DLX-IN500 Input Module does not include the LiNX Bus Cable (PWH) 300mm 11-13/16" (GLM-BUS030).
 E - Item 6 used after 01/23/22.

NOTE C continued. Wheelchairs with Serial Numbers before 18JE000303: Update the bundle files. The bundle file must be updated for the output module to function. To avoid losing configuration settings during this update, request Invacare Technical Service to have the existing file converted and updated.