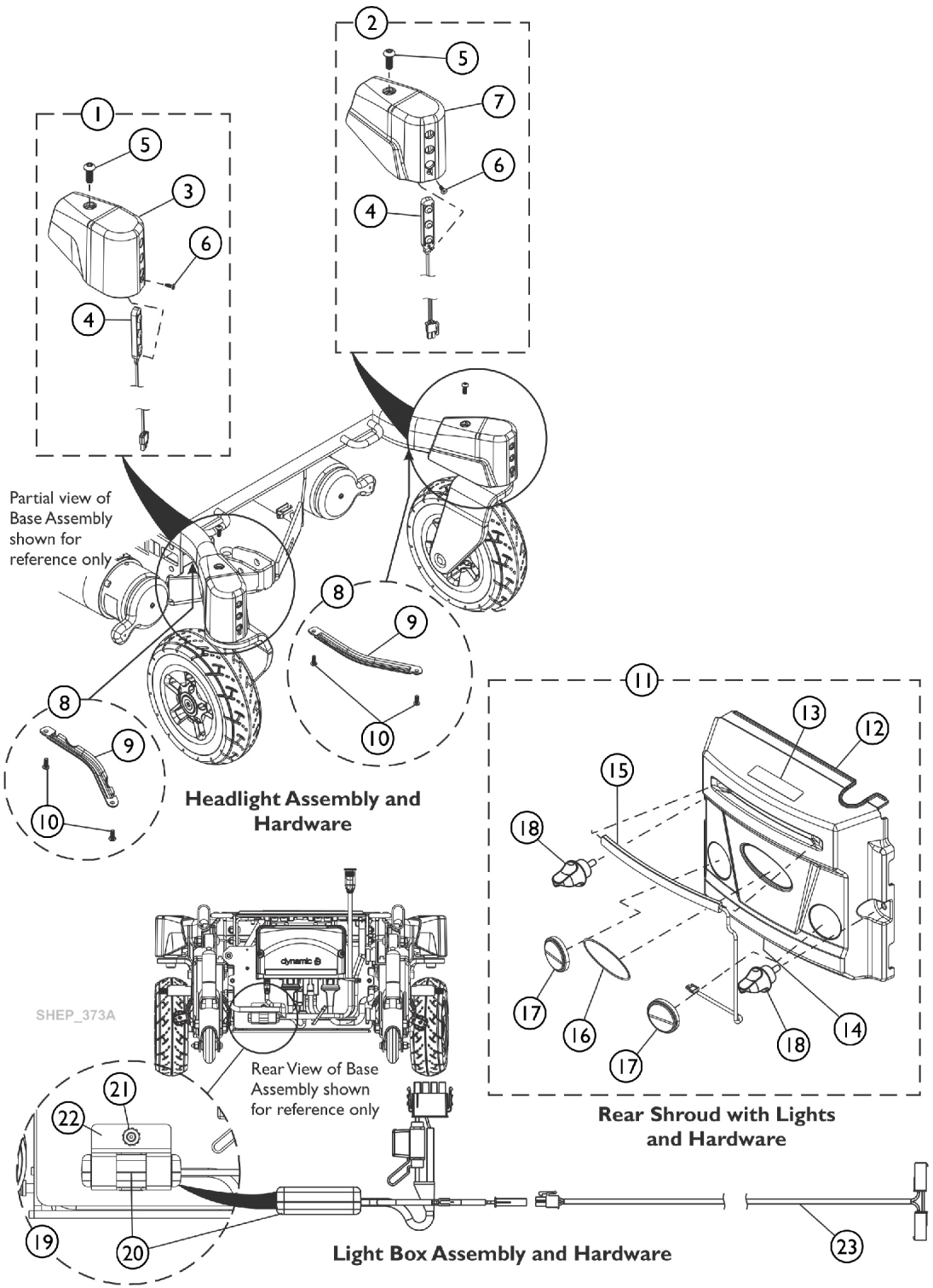


Light System



Light System

Item Number	Note	Part Number	Description	Quantity Per	
				Package	Assembly
1	A	60127919	Kit, Headlight Assembly w/ Cap and Hardware - Right	1	1
3			Cap, Headtube - Right	1	1
4			Headlights w/ Connector	1	1
5			Screw, Socket Button Head Cap (M5 x 16)	1	1
6			Screw, Phillips Pan Head (#10-32 x 5/8")	1	1
			Sheet, Insert Parts Service	1	1
2	B	60127920	Kit, Headlight Assembly w/ Cap and Hardware - Left	1	1
7			Cap, Headtube - Left	1	1
4			Headlights w/ Connector	1	1
5			Screw, Socket Button Head Cap (M5 x 16)	1	1
6			Screw, Phillips Pan Head (#10-32 x 5/8")	1	1
			Sheet, Insert Parts Service	1	1
8	C	60127918	Kit, Cover, Wire Channel w/ Hardware (Pkg. of 2)	2	1
9			Cover, Wire Channel	1	2
10			Screw, Socket Button Head Cap (M5 x 16)	1	4
11	D	60127916	Kit, Rear Shroud w/ Lights and Hardware, Wide	1	1
12			Shroud, Rear, Wide	1	1
13			Decal, AVIVA	1	1
14			Label, Warning Motor/SSD Gearbox Replacement	1	1
15			Lights, Rear w/ Connectors	1	1
16			Decal, Invacare Medallion, Reflective - Large	1	1
17			Reflector, Red	1	2
18			Screw, Knob (10-32 x 1/2")	1	2
			Sheet, Insert Parts Service	1	1
11	D	60128935	Kit, Rear Shroud w/ Lights and Hardware, Narrow	1	1
12			Shroud, Rear, Narrow	1	1
13			Decal, AVIVA	1	1
14			Label, Warning Motor/SSD Gearbox Replacement	1	1
15			Lights, Rear w/ Connectors	1	1
16			Decal, Invacare Medallion, Reflective - Large	1	1
17			Reflector, Red	1	2
18			Screw, Knob (10-32 x 1/2")	1	2
			Sheet, Insert Parts Service	1	1
15		60127942	Kit, Asm, Rear Lights w/ Connectors	1	1
			Lights, Rear w/ Connectors	1	1
			Sheet, Insert Parts Service	1	1
18		60127922	Kit, Screw Knob (Pkg. of 2)	2	1
			Screw, Knob (10-32 x 1/2")	1	2
			Sheet, Insert Parts Service	1	1
19	E	60127921	Kit, Light Box w/ Hardware	1	1
20			Box, Light	1	1
21			Nut (M6 x 1mm)	1	1
22			Bracket, Light Box, Black	1	1
			Sheet, Insert Parts Service	1	1
23		60127949	Kit, Light Box Extension Harness	1	1
			Harness, Light Box Extension	1	1

Light System

Item Number	Note	Part Number	Description	Quantity Per	
				Package	Assembly
			Sheet, Insert Parts Service	1	1
NOTE: A - Includes items 3-6. B - Includes items 4-7. C - Includes items 9 and 10. D - Includes items 12-18. E - Includes items 20-22.					