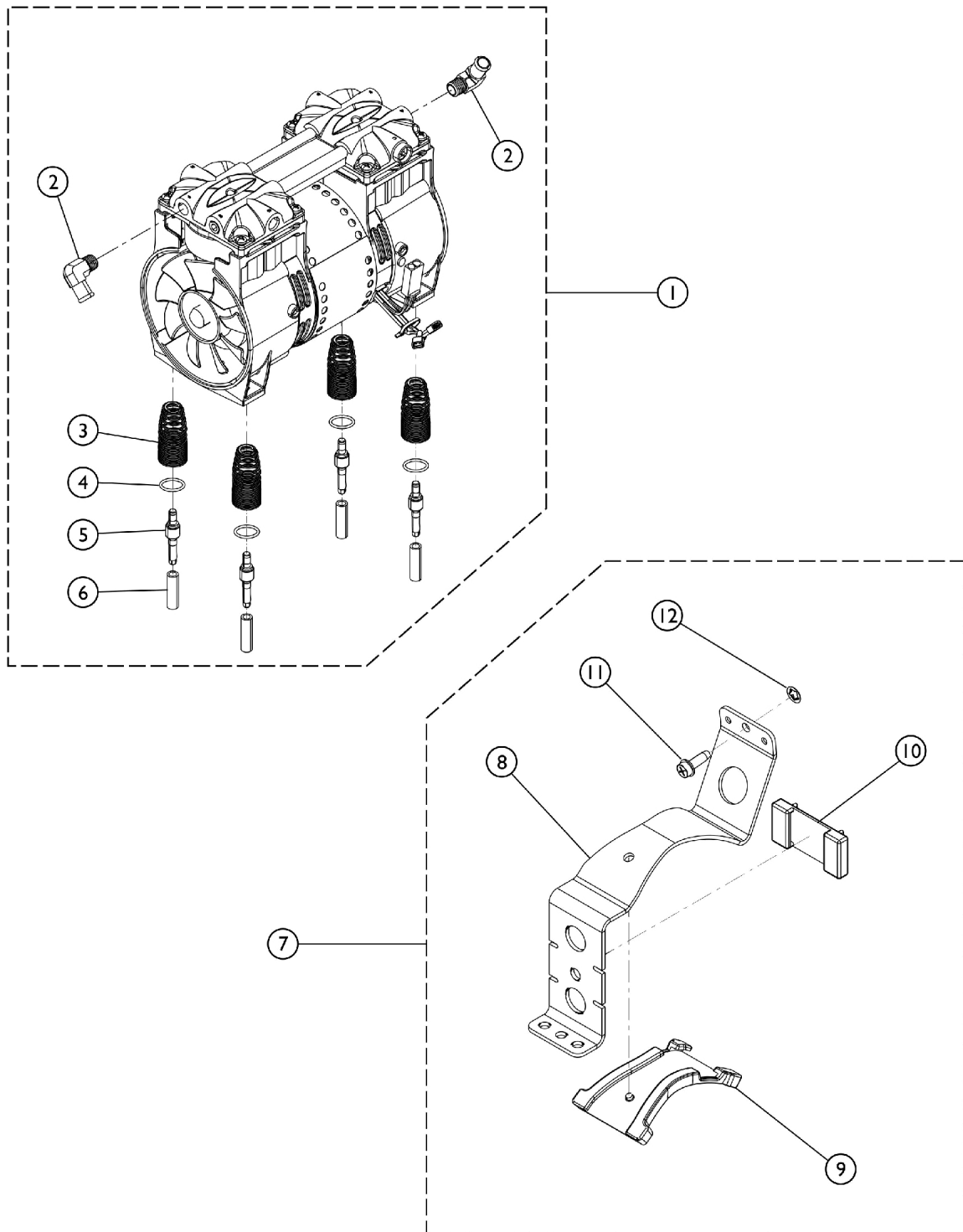


Compressor



Compressor

Item Number	Note	Part Number	Description	Quantity Per		
				Package	Assembly	
1	A	1146313-NLA	NLA - Tech Only - Compressor with Mounting Hardware	1	1	
2		1108819	Fitting, Elbow (1/2" Beaded Hose x 1/4" NPT)	1	1	
3		1105504-NLA	NLA - Spring, Compressor Mount	1	4	
3		1150581	Spring, Compressor Mount	1	4	
4		1119596	O-Ring (13/16 x 1")	1	4	
5		1106446-NLA	NLA - Pin, Spring Retainer	1	4	
5		1150580	Pin, Spring Retainer	1	4	
6		1107411	Glide, Pin	1	4	
7		B	1186230	Kit, Compressor Restraint Bracket w/ Hardware	1	1
8				Bracket, Restraint, Compressor	1	1
9			NLA - Bumper, Bracket	1	1	
10			Bumper, Restraint Bracket, Compressor	1	1	
11			NLA - Screw, Phillips Hex Washer Head w/ Patch (1/4-20 x 3/4")	1	1	
12			Retainer, Push (1/4")	1	1	
	C	1153687	Kit, Compressor Rebuild w/ Instructions (2660CE50)	1	1	
			Compressor Rebuild Assembly - Thomas	1	1	
			Instruction Sheet, Thomas Rebuild 2660-2650	1	1	
	D	60127535	Kit, 9L Compressor Rebuild w/ Instructions (ZGK500P2-90/2-49B)	1	1	
NOTE: A - Includes items 2 - 6. B - Includes items 8 - 12. C - Not Shown. Kit includes Instruction Manual (1150752) also and used for Thomas Compressors only. D - Not Shown. Kit includes Instruction Manual (60127536) also and used for Sinc Med Compressors only.						