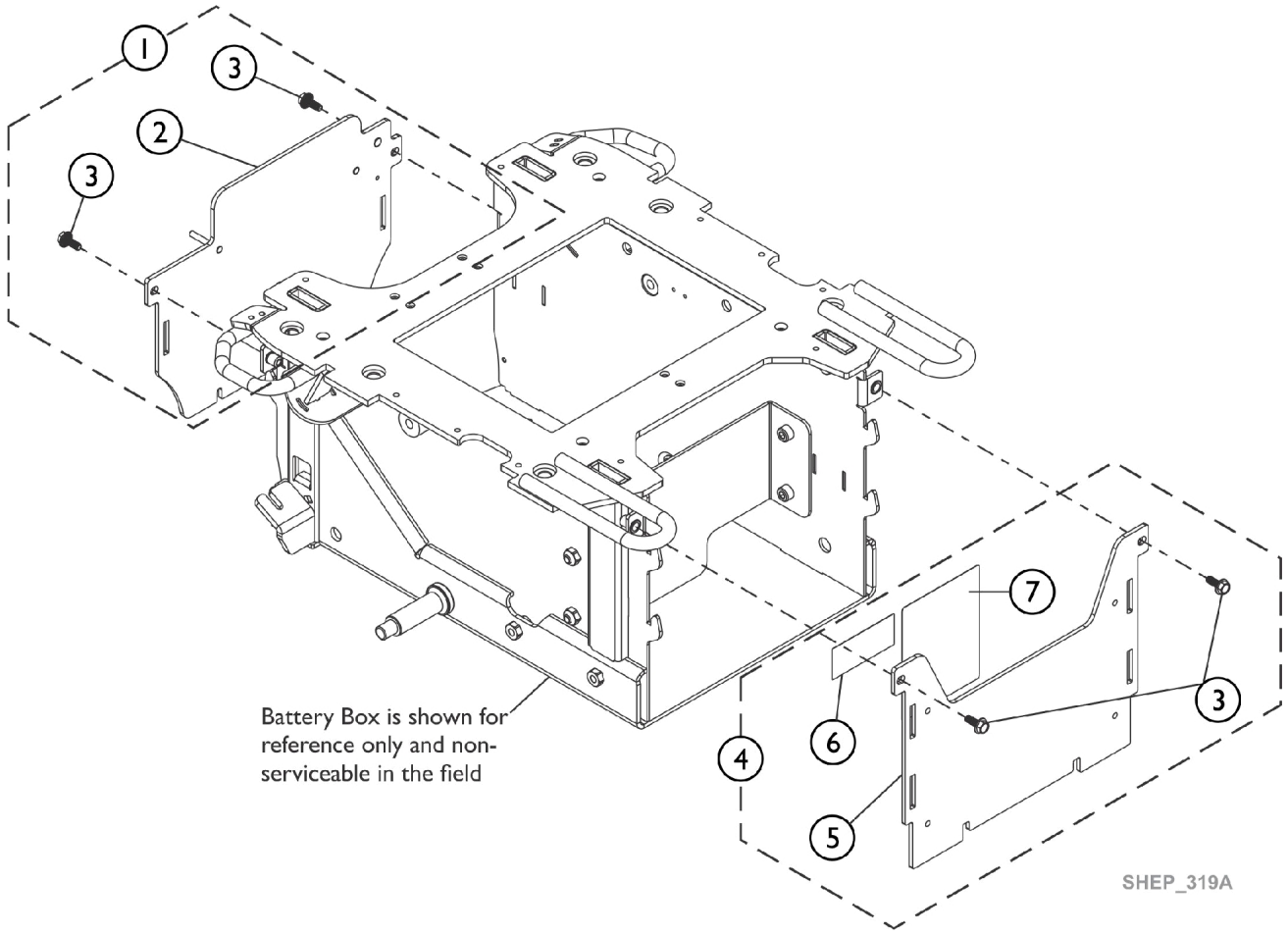


Battery Box Assembly, Front and Rear Plates



Battery Box Assembly, Front and Rear Plates

Item Number	Note	Part Number	Description	Quantity Per	
				Package	Assembly
1	A	60124325	Kit, Plate, Battery Box Rear w/ Hardware	1	1
2			Plate, Battery Box Rear	1	1
3			Screw, Flat Head Cap Serrated (M6 x 1 x 16mm)	1	2
			Sheet, Insert Parts Service	1	1
4	B	60124326	Kit, Plate, Battery Box Front GP24 w/ Hardware	1	1
3			Screw, Flat Head Cap Serrated (M6 x 1 x 16mm)	1	2
5			Plate, Battery Box Front	1	1
6			Label, Warning Battery GP24 Terminal	1	1
7	C	60123251	Label, Warning Battery GP24 Wiring	1	1
			Sheet, Insert Parts Service	1	1
4			Kit, Plate, Battery Box Front GP24 w/ Hardware FC	1	1
3			Screw, Flat Head Cap Serrated (M6 x 1 x 16mm)	1	2
5			Plate, Battery Box Front	1	1
6			Label, Warning Battery GP24 Terminal	1	1
7			Label, Warning Battery GP24 Wiring FC	1	1
			Sheet, Insert Parts Service	1	1
NOTE: A - Includes items 2 and 3. B - Includes items 3, 5-7. Labeling in English. C - Includes items 3, 5-7. Labeling in French-Canadian.					