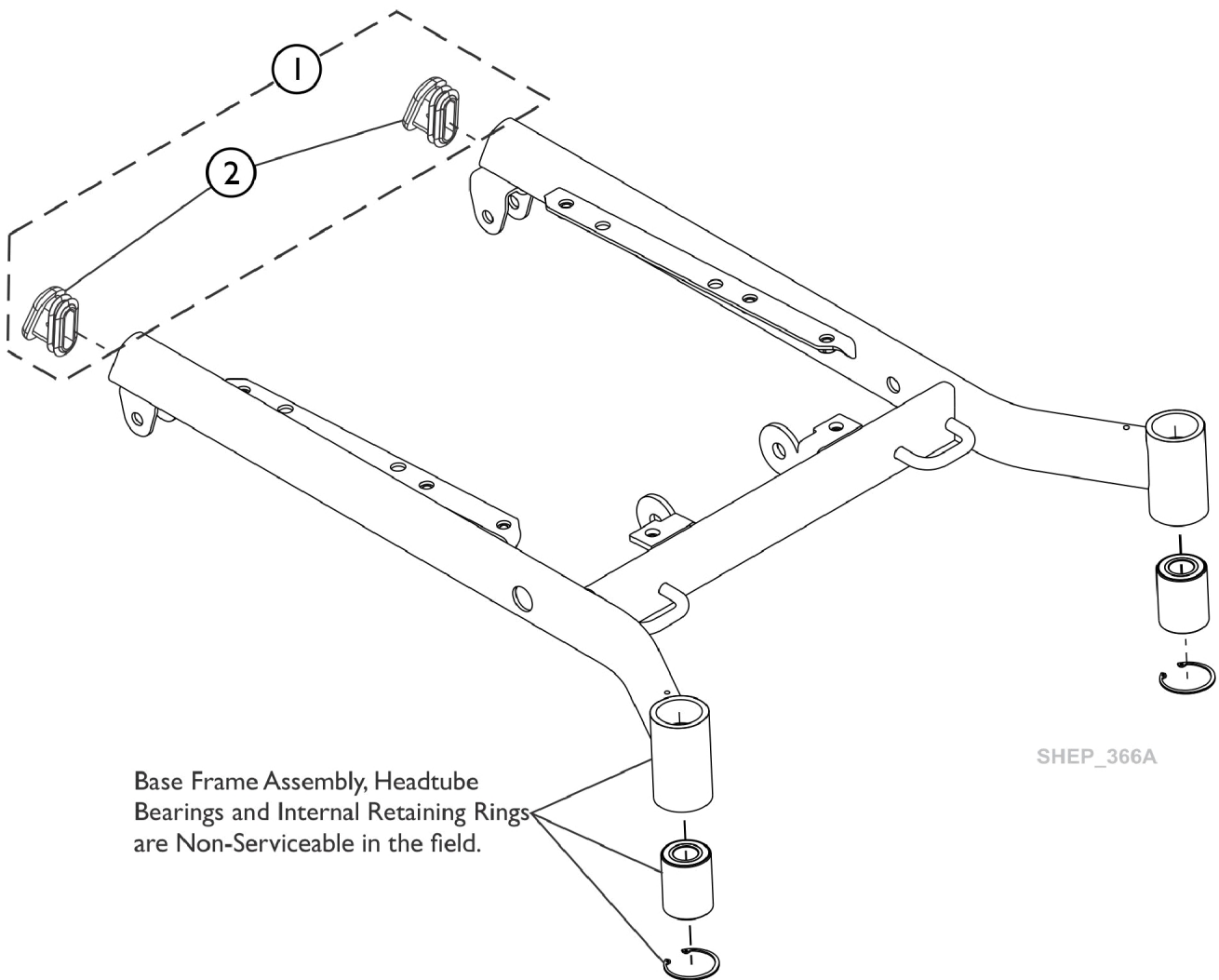


Base Frame Assembly

NOTE: "Base Frame Assembly, Headtube Bearings and Internal Retaining Rings are not available as a service part."

**Wheelchair must be returned to Invacare when items listed need replaced.
Contact Invacare Customer Service for additional assistance.**



Base Frame Assembly

NOTE: "Base Frame Assembly, Headtube Bearings and Internal Retaining Rings are not available as a service part."

**Wheelchair must be returned to Invacare when items listed need replaced.
Contact Invacare Customer Service for additional assistance.**

Item Number	Note	Part Number	Description	Quantity Per	
				Package	Assembly
1		60127923	Kit, Cap, End (Pkg. of 2)	2	1
			Cap, End	1	2
			Sheet, Insert Parts Service	1	1