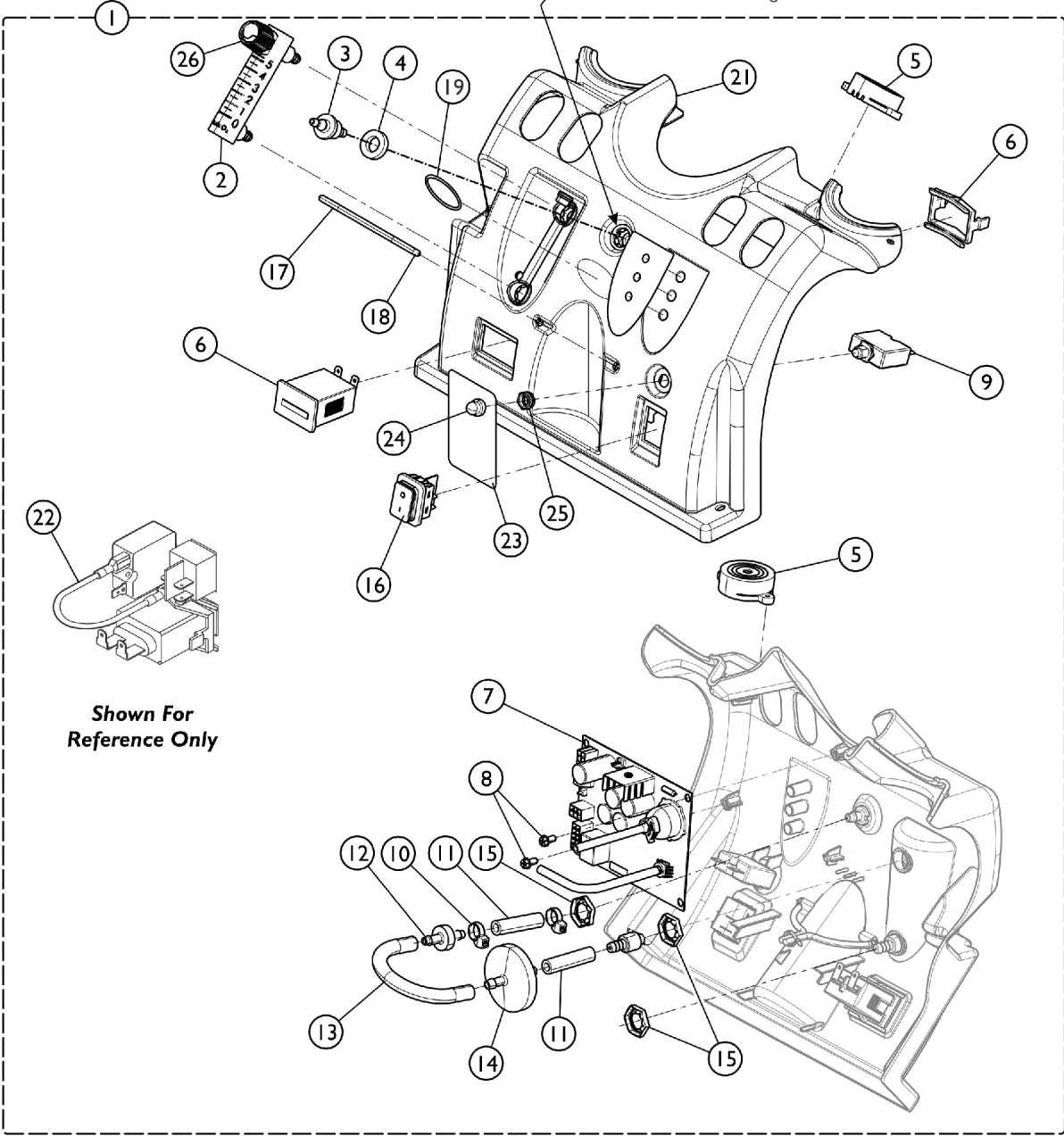


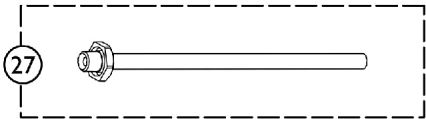
# Control Panel and P.C. Board

## Perfecto2, Perfecto2V, PerfectoW

**NOTE:** See Control Panel Repair Kit part #60123182 before ordering Item #1 or Item #21



**Shown For Reference Only**



## Control Panel and P.C. Board

### Perfecto2, Perfecto2V, PerfectoW

Item Number	Note	Part Number	Description	Quantity Per		
				Package	Assembly	
1		1143576-NLA	NLA - Control Panel Assembly - P2/PW	1	1	
1		1143553-NLA	NLA - Control Panel with SensO2 Assembly - PO2/PO2W	1	1	
1	D,E	1164802	Control Panel w/ SensO2 Assembly - PO2V	1	1	
		60123182	Kit, Control Panel Repair	1	1	
			Plate, External Outlet Port	1	1	
			Plate, Internal Outlet Port	1	1	
			Washer, Foam	1	1	
			Tie Wrap (8" L)	1	1	
			Manual, Service for Control Panel Repair	1	1	
2			1110561	Flowmeter without Palnuts - 5 Liter	1	1
3			1180107	Connector, Barbed, Brass (1/4")	1	1
4		1194537	Washer, Foam	1	1	
5		1143503	Horn/Alarm Assembly	1	1	
6		1098707	Hour Meter Assembly with Clip	1	1	
7		1143475	PCB Assembly - P2/PW	1	1	
7		1143486	PCB Assembly - PO2/PO2W	1	1	
7	C	1194768	PCB Assembly - PO2V	1	1	
7		1143486E	WARR RPLMT - PCB Assembly - PO2/PO2W	1	1	
8		1143499	Screw, Phillips Hex Washer Head (#8-16 x 3/8)	1	2	
9		1143542	Breaker, Circuit 6 AMP	1	1	
10		2001682	Tie Wrap (8" L)	1	2	
11		1110473	Tubing, PVC (1/4 x 1-3/4")	1	2	
12		2000436	Check Valve, Barb (5/16")	1	1	
13		1143144	Tubing, PVC (1/4 x 5")	1	1	
14		P0750X030	Filter, Patient HEPA Outlet	1	1	
15		2000507	Palnut (9/16-18)	1	3	
16		1139950	Switch, Powe On/Off	1	1	
17		60125500	Cord, Elastic	1	1	
18		1006525	Tie Wrap (3-29/32" L)	1	1	
19		1095497	Decal, Invacare Logo (1.6)	1	1	
20		1143545	Label, LED - P2/PW	1	1	
20		1143479	Label, LED - PO2/PO2V/PO2W	1	1	
21	D	1143469	Panel, Control	1	1	
22		2001764	Jumper Wire Assembly	1	1	
23		1163429	Package, Label, No Smoking, Perfecto2/Perfecto2V/PerfectoW	20	1	
24		1112562-NLA	NLA - Tech Only - Seal, Circuit Breaker	1	1	
26		1128379-NLA	NLA - Package, Knob, Flowmeter, Silver w/ Black Swish (Pkg. of 10)	10	1	
26		1128380	Package, Knob, Flowmeter, Black w/ Silver Swish	10	1	
27		2000799	Adapter with Tubing for Humidifier Bottle	1	1	
28		1143501-NLA	NLA - Power Jumper Assembly	1	1	
	A,B	1143477	Main Harness Assembly	1	1	
	A,B	1143526	Wire Harness Valve Assembly	1	1	

# Control Panel and P.C. Board

## Perfecto2, Perfecto2V, PerfectoW

NOTE: A - Not Shown.  
B - Connects to the PC Board.  
C - 1164808 replaced with 1194768 and can be used on all PO2V models.  
D - Control Panel Repair Kit part #60123182 assembles to the Control Panel before attaching item #3 Brass Barbed Connector. This eliminates the need to replace a complete Control Panel Assembly.  
E - Not Shown