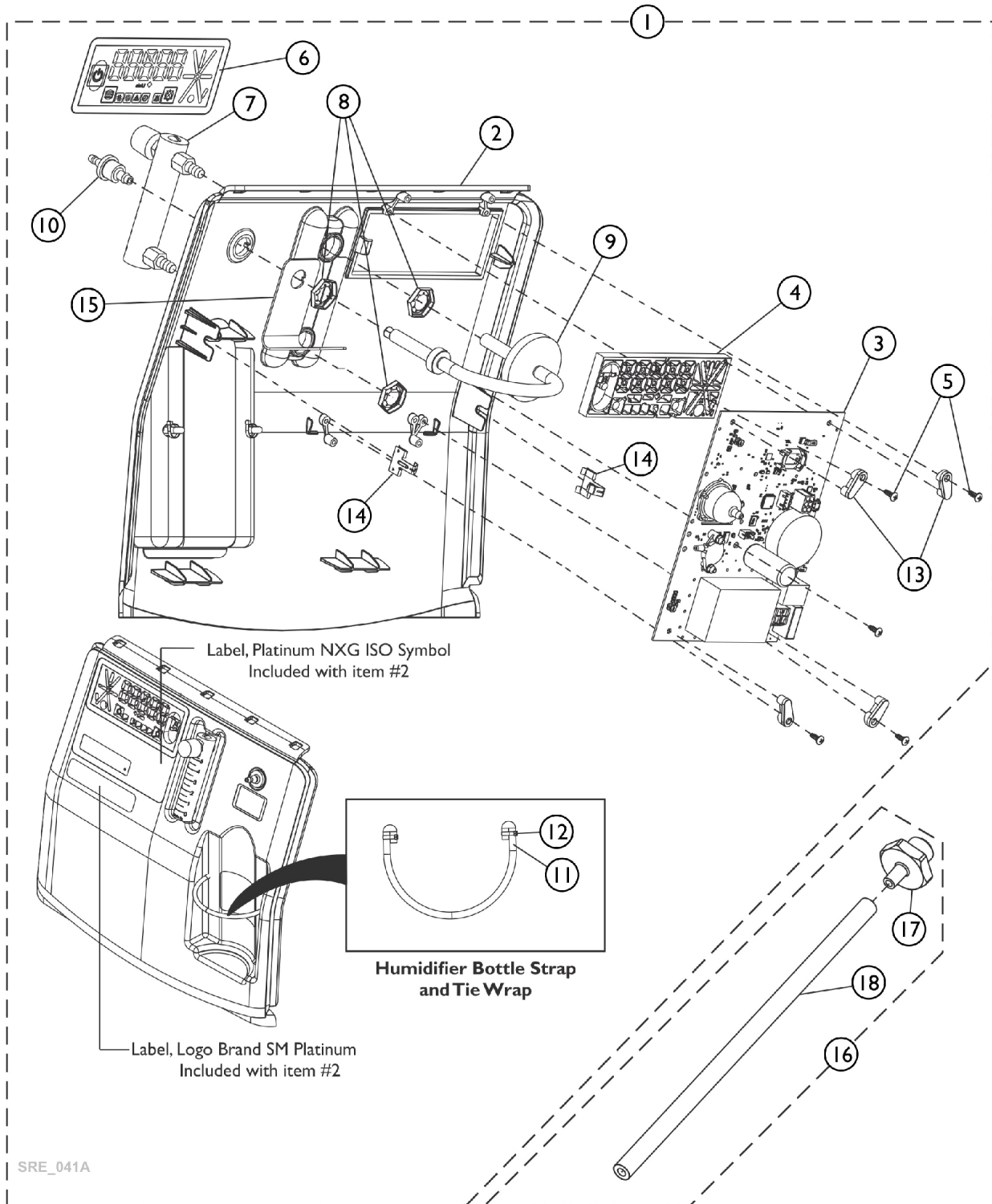


# Control Panel and P.C. Board Assembly



## Control Panel and P.C. Board Assembly

Item Number	Note	Part Number	Description	Quantity Per	
				Package	Assembly
1	A	60127166	Kit, Control Panel Assembly, Platinum 5NXG	1	1
2			Control Panel w/ Labels, Platinum 5NXG	1	1
3			PCB Assembly, Platinum 5NXG	1	1
4			Frame, LED Array, Platinum 5NXG	1	1
5			Screw, Phillips Round Head (#6-19 x 3/8")	1	5
6			Label, LED Overlay, Platinum 5NXG	1	1
7			Flow Meter Assembly, Platinum 5NXG	1	1
8			Palnut (9/16-18)	1	3
9			Filter Assembly, Patient Outlet	1	1
10			Connector, Barbed, Brass (1/4")	1	1
11			Strap, Humidifier Bottle, Platinum 5NXG	1	1
12			Tie Wrap (3-29/32" L)	1	2
13			Clip, PCB Mount NXG	1	4
14			Clip, Retainer, Panel Mount	1	2
15			Bracket, Support	1	1
			Sheet, Insert Parts Service	1	1
3		60127136	Kit, PCB Assembly, Platinum 5NXG	1	1
			PCB Assembly, Platinum 5NXG	1	1
			Sheet, Insert Parts Service	1	1
	B	60127167	Kit, Flowmeter w/ Palnuts	1	1
7			Flow Meter Assembly, Platinum 5NXG	1	1
8			Palnut (9/16-18)	1	2
			Sheet, Insert Parts Service	1	1
	C	60127168	Kit, Patient Outlet Port w/ Palnut (Pkg. of 10)	10	1
8			Palnut (9/16-18)	1	1
10			Connector, Barbed, Brass (1/4")	1	1
			Sheet, Insert Parts Service	1	1
9		60127144	Kit, Patient Outlet Filter Assembly	1	1
			Filter Assembly, Patient Outlet	1	1
			Sheet, Insert Parts Service	1	1
	D,E	60127143	Kit, Patient HEPA Outlet Filter	1	1
			Filter, Patient HEPA Outlet	1	1
			Sheet, Insert Parts Service	1	1
16	F	60127163	Kit, Adapter w/ Tubing, Humidifier Bottle (Pkg. of 10)	10	1
17			Adapter, Humidifier Bottle	1	1
18			Tube, Humidifier Bottle Adaptor (3/16 x 3/8 x 8-3/4")	1	1
			Sheet, Insert Parts Service	1	1

NOTE: A - Includes items 2-15  
 B - Includes items 7-8  
 C - Includes items 8 and 10  
 D - Not Shown  
 E - Used with item 9 Patient Outlet Filter Assembly.  
 F - Includes 10 ea. of items 17 and 18.