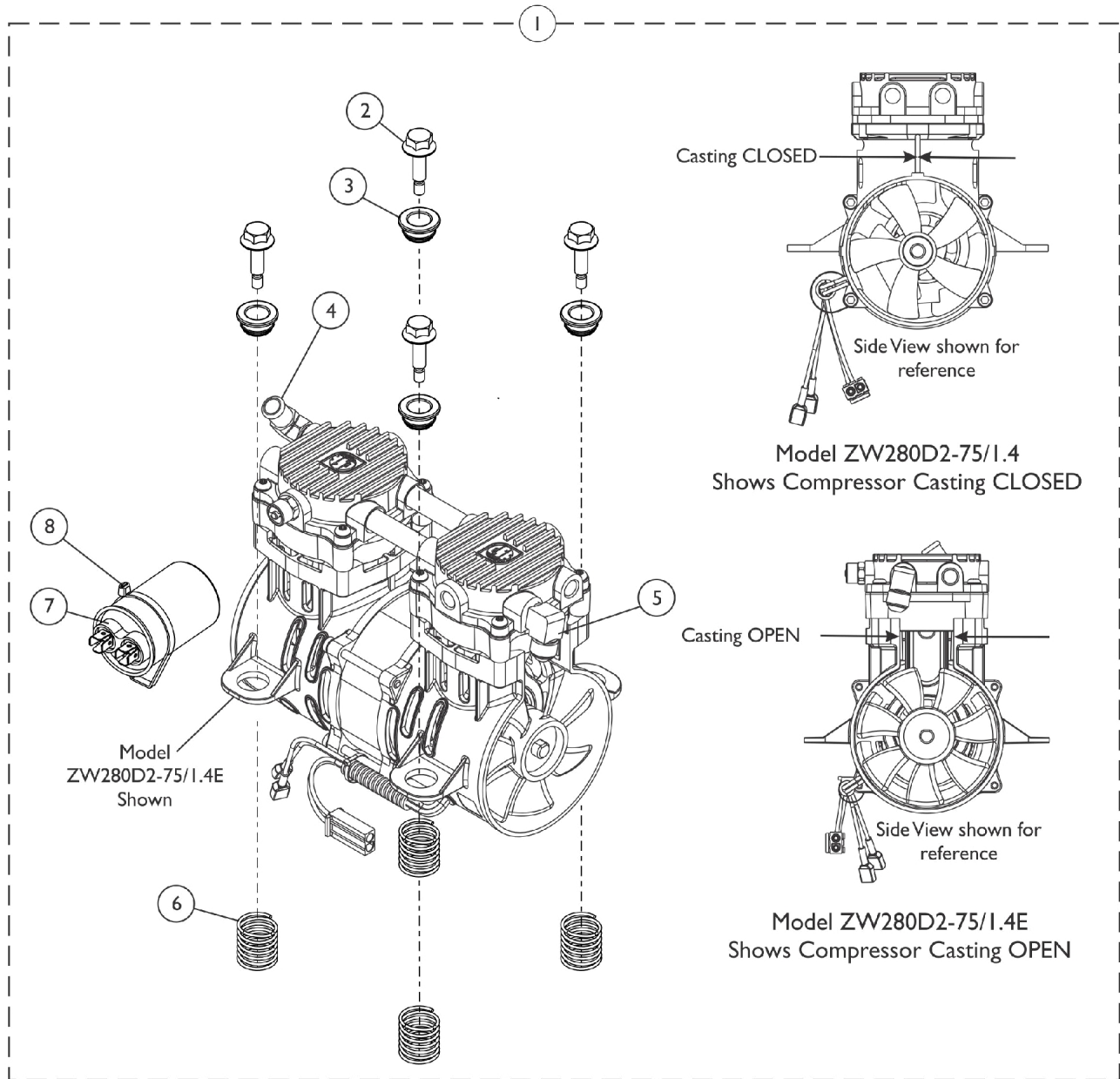
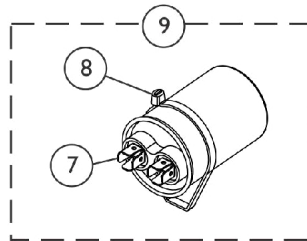


Compressor and Mounting Hardware Perfecto2V



SRE_039A



Compressor and Mounting Hardware

Perfecto2V

| Item Number | Note | Part Number | Description | Quantity Per | |
|-------------|------|-------------|--|--------------|----------|
| | | | | Package | Assembly |
| 1 | D,A | 1165097 | Kit, Compressor with Hardware - PO2V | 1 | 1 |
| | | | Compressor, ZW280D2-75/1.4E | 1 | 1 |
| 2 | | | Screw, Hex Head Flange (1/4-20 x 7/8") | 1 | 4 |
| 3 | | | Bushing, Mounting | 1 | 4 |
| 4 | | | Fitting, Elbow (1/2" Beaded Hose x 1/4" NPT) | 1 | 1 |
| 5 | | | Elbow, Male Flare | 1 | 1 |
| 6 | | | Spring, Compression (63/64 x 1-1/4 x 1/16") | 1 | 4 |
| 7 | | | Capacitor, 22MFD, NA | 1 | 1 |
| 8 | | | Tie Wrap (17-1/2" L) | 1 | 1 |
| 2 | | 1143461 | Screw, Hex Head Flange (1/4-20 x 7/8") | 1 | 4 |
| 3 | | 1143462 | Bushing, Mounting | 1 | 4 |
| 4 | | 1108819 | Fitting, Elbow (1/2" Beaded Hose x 1/4" NPT) | 1 | 1 |
| 5 | E | 1169408-NLA | NLA - Fitting, Elbow Swivel (1/4 NPT x 3/8 Tube) | 1 | 1 |
| 5 | | 1143489 | Elbow, Male Flare | 1 | 1 |
| 6 | | 1143460 | Spring, Compression (63/64 x 1-1/4 x 1/16") | 1 | 4 |
| 9 | B | 1191077 | Kit, Capacitor Replacement, 22MFD | 1 | 1 |
| | | | Capacitor, 22MFD, NA | 1 | 1 |
| | | | Tie Wrap (17-1/2" L) | 1 | 1 |
| | | | Tie Wrap (8" L) | 1 | 2 |
| | | | Instruction Sheet, Capacitor Replacement | 1 | 1 |
| | G,C | 1167620 | Kit, Compressor Rebuild, PO2V, ZW280D2-75/1.4 | 1 | 1 |
| | | | Cylinder | 1 | 2 |
| | | | Seal Cup | 1 | 2 |
| | | | Valve, Flapper Top | 1 | 2 |
| | | | O-Ring Round | 1 | 2 |
| | | | Screw, Head | 1 | 8 |
| | | | Screw, Flapper Valve | 1 | 4 |
| | | | Washer, Square | 1 | 4 |
| | | | Sheet, Instruction | 1 | 1 |
| | | | Valve, Flapper Bottom | 1 | 2 |
| | | | O-Ring, Head Seal | 1 | 2 |
| | | | Keeper Strip, Flapper Valve, Short | 1 | 2 |
| | | | Keeper Strip, Flapper Valve, Long | 1 | 2 |
| | H,C | 1191916 | Kit, Compressor Rebuild, PO2V, ZW280D2-75/1.4E | 1 | 1 |
| | | | Cylinder | 1 | 1 |
| | | | Piston Cup Seal | 1 | 1 |
| | | | Screw, Head | 1 | 1 |
| | | | O-Ring, Head Seal | 1 | 1 |
| | | | Screw, Valve Flapper | 1 | 1 |
| | | | Washer, Square | 1 | 1 |
| | | | Keeper Strip, Flapper Valve, Short | 1 | 1 |
| | | | Keeper Strip, Flapper Valve, Long | 1 | 1 |
| | | | Screw, Valve Flapper | 1 | 1 |
| | | | Valve Flapper, Bottom Intake | 1 | 1 |
| | | | O-Ring, Valve Seal - Round | 1 | 1 |
| | | | Valve Flapper, Top - Exhaust | 1 | 1 |

Compressor and Mounting Hardware Perfecto2V

| Item Number | Note | Part Number | Description | Quantity Per | |
|--|------|-------------|---------------------------------------|--------------|----------|
| | | | | Package | Assembly |
| | F | 1188157 | Kit, Cylinder Rebuild, Complete, PO2V | 1 | 1 |
| | F | 1180334 | Kit, Cylinder w/ Hardware, PO2V | 1 | 1 |
| | F | 1180335 | Package, O-Ring, PO2V | 100 | 1 |
| <p>NOTE: A - Kit includes the Compressor and items 2-8. As of 10/01/15 Compressor Model was revised from ZW280D2-75/1.4 to ZW280D2-75/1.4E</p> <p>B - Kit includes items 7 and 8.</p> <p>C - Not Shown.</p> <p>D - When ordering a replacement compressor, you should order 1143557 Heat Exchanger, when replacing a unit manufactured between 5/17/11 and 7/20/11.</p> <p>E - No longer available. Use 1143489 as a replacement.</p> <p>F - Not shown in illustration.</p> <p>G - Compressor Rebuild Kit used before 10/01/15 for CLOSED Compressor Casting.</p> <p>H - Compressor Rebuild Kit used after 09/30/15 for OPEN Compressor Casting.</p> | | | | | |