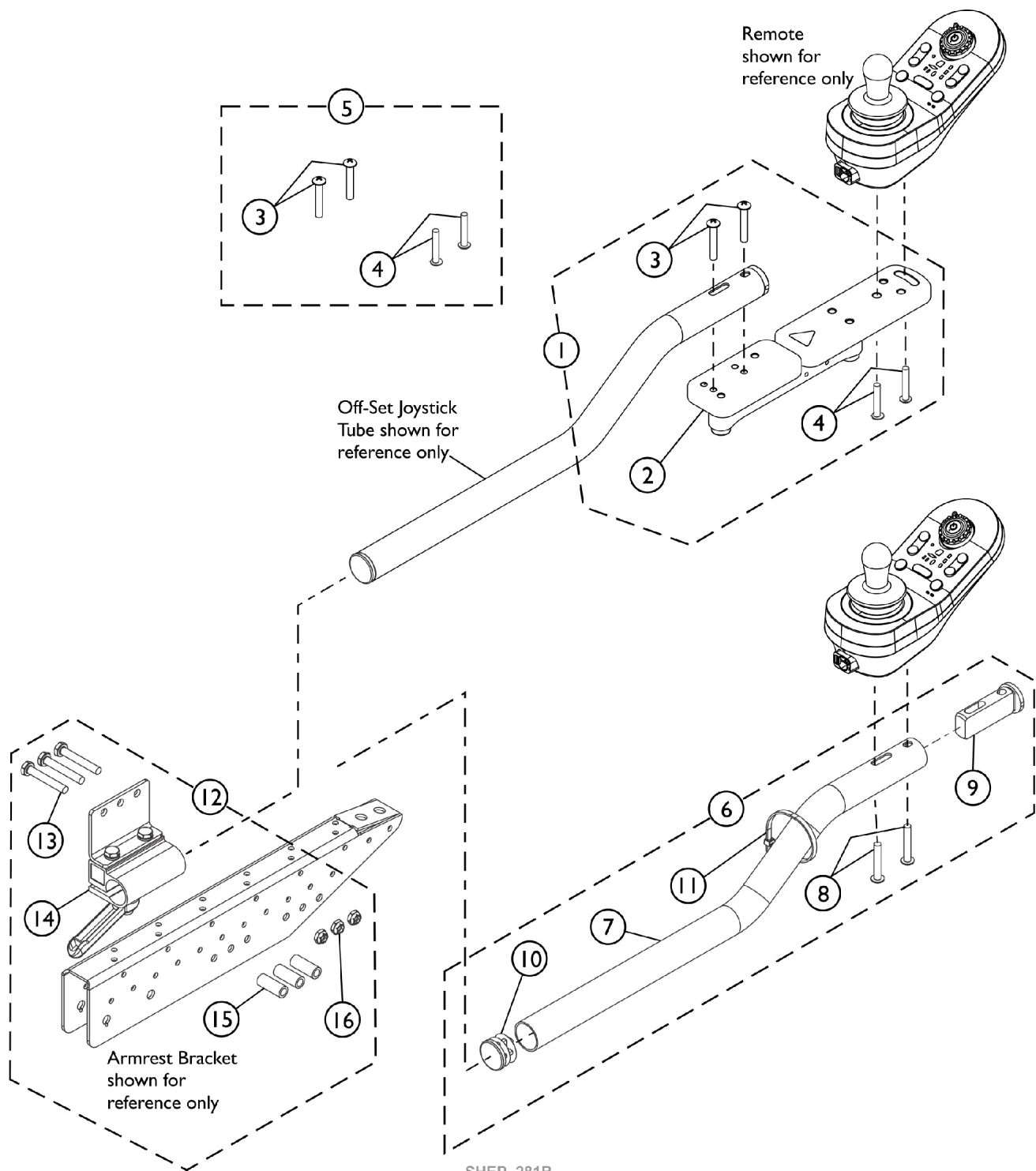


Joystick Tube, 2" Offset, Quad Link Assembly, Remote

Quad Link Assembly used for Remotes REM110, REM210, REM211, REM216 and REM400



Joystick Tube, 2" Offset, Quad Link Assembly, Remote

Quad Link Assembly used for Remotes REM110, REM210, REM211, REM216 and REM400

Item Number	Note	Part Number	Description	Quantity Per	
				Package	Assembly
1	A	60122771	Kit, Quad Link Assembly and Mounting Hardware - Right	1	1
2			Quad Link Assembly - Right	1	1
3			Screw, Socket Button Head Cap (M6 x 16)	1	2
4			Screw, Socket Button Head Cap (M5 x 16)	1	2
			Sheet, Insert Parts Service	1	1
1	A	60122772	Kit, Quad Link Assembly and Mounting Hardware - Left	1	1
2			Quad Link Assembly - Left	1	1
3			Screw, Socket Button Head Cap (M6 x 16)	1	2
4			Screw, Socket Button Head Cap (M5 x 16)	1	2
			Sheet, Insert Parts Service	1	1
5	B	60108352	Kit, Quad Link Mounting Hardware, Captain Seat	1	1
3			Screw, Socket Button Head Cap (M6 x 16)	1	2
4			Screw, Socket Button Head Cap (M5 x 16)	1	2
6	C	1117464	Kit, 2" Offset Joystick Tube with Hardware	1	1
7			Tube, Joystick Offset (2")	1	1
8			Screw, Phillips Pan Head (#10-32 x 1-1/8")	1	2
9			Spacer, Joystick Tube, Black	1	1
10			Plug Button, Black (7/8")	1	1
11			Tie Wrap (11-1/2" L)	1	1
12	D	1115000	Kit, Joystick Tube Mounting Hardware - Captain Seat	1	1
NOTE: A - Includes items 2-4 and Service Parts Insert Sheet B - Includes items 3 and 4 C - Includes items 7-11 D - Includes items 13-16					