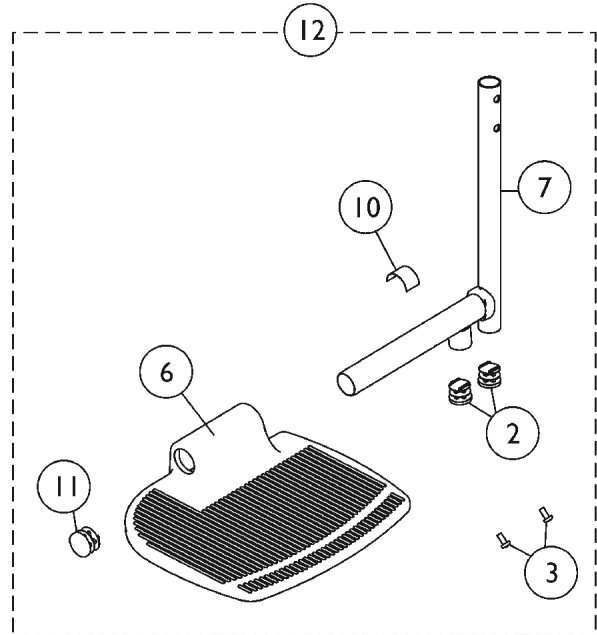
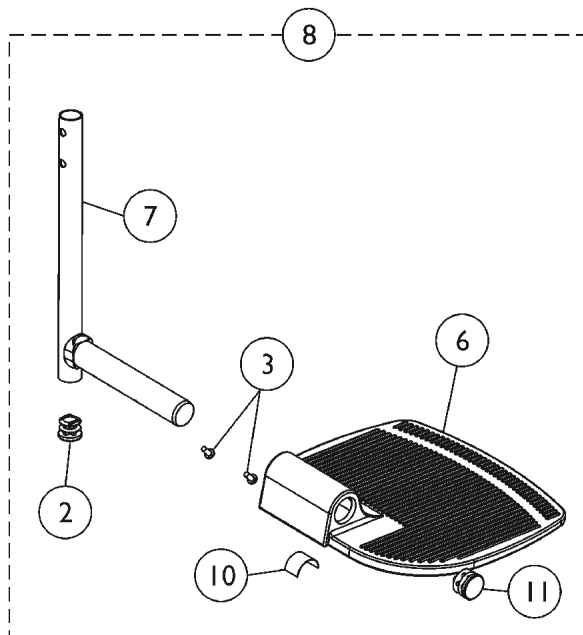
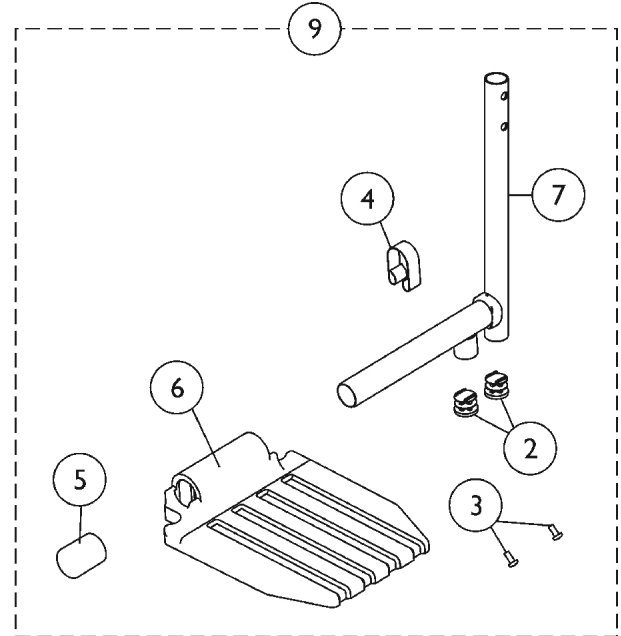
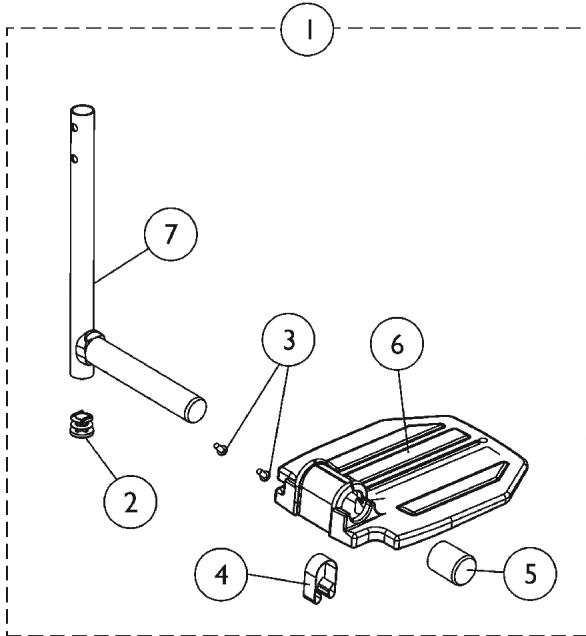


Pivot/Slide Tube w/ Footplate

T93H/T94H Series - Invacare Transport Only

NOTE: Pivot/Slide Tube and Footplate is attached to Footrest Support using the spring button or bolt thru hardware. See chart titled, "Pivot Slide Tube Attaching Hardware."



Pivot/Slide Tube w/ Footplate

T93H/T94H Series - Invacare Transport Only

NOTE: Pivot/Slide Tube and Footplate is attached to Footrest Support using the spring button or bolt thru hardware. See chart titled, "Pivot Slide Tube Attaching Hardware."

Item Number	Note	Part Number	Description	Quantity Per	
				Package	Assembly
1,8	A,B	See Chart	Item #1 and #8 Pivot Slide Tube with Footplate - T93H Series	1	1
2		1027097	Plug Button, Black (3/4")	1	1
3		40120X001	Screw, Phillips Pan Head (#8-32 x 3/8")	1	1
4		1006981	Spring, Tension	1	1
5		1016346	Cap, End, Tube, Black (7/8")	1	1
6	C	44200X027	Footplate, Aluminum, Medium, Black (7-3/4" W x 6" L)	1	1
6	C	1015178	Footplate, Composite, Black (6" W x 7-53/64" L)	1	1
6	C	44200X025	Footplate, Aluminum, Extra Large, Black - Right (8" W x 8-1/2" L)	1	1
6	C	44200X026	Footplate, Aluminum, Extra Large, Black - Left (8" W x 8-1/2" L)	1	1
7	D	1111278-NLA	NLA - Pivot/Slide Tube w/ Plug Button, Footrest, Chrome	1	1
7	E	1110300-NLA	NLA - Pivot/Slide Tube w/ Plug Button, Legrest, Chrome	1	1
9,12	F,G	See Chart	Item #9 and #12 Pivot Slide Tube with Footplate - T94H Series	1	1
10		1036123	Spring, Leaf	1	1
11		1027095	Plug Button, Black (7/8")	1	1
	H	See Chart	Pivot Slide Tube Attaching Hardware	1	1

NOTE: A - Item #1 includes items 2-7.
 B - Item #8 includes items 2, 3, 6, 7,10 and 11.
 C - Used for 16-22" wide models.
 D - Used for T93H Series models
 E - Used for T94H Series models
 F - Item #9 includes items 2-7
 G - Item #12 includes items 2, 3, 6, 7,10 and 11.
 H - Not Shown

Pivot/Slide Tube w/ Footplate

T93H/T94H Series - Invacare Transport Only

NOTE: Pivot/Slide Tube and Footplate is attached to Footrest Support using the spring button or bolt thru hardware. See chart titled, "Pivot Slide Tube Attaching Hardware."

Item #1 and #8 Footrest Pivot Slide Tube with Footplate - T93H Series

Item Number	Model Number	Chair Width	Footplate Style	Frame Side	Standard	2" Longer	4" Longer
1.	T93HA T93HAB - Black	16-22"	Aluminium	Right	1111285 See Note(s) A	N/A	N/A
1.	T93HA T93HAB - Black	16-22"	Aluminium	Left	1111286 See Note(s) A	N/A	N/A
1.	T93HC T93HCB - Black	16-22"	Composite	Right	1194329	N/A	N/A
1.	T93HC T93HCB - Black	16-22"	Composite	Left	1194330	N/A	N/A
8.	T93HA - Black	16-22"	Extra Large Aluminum	Right	1110344	N/A	N/A
8.	T93HA - Black	16-22"	Extra Large Aluminum	Left	1110345	N/A	N/A

NOTE: A - NOTE: Part numbers changed from Chrome Pivot/Slide Tube to Black as of 5/16/19

Pivot/Slide Tube w/ Footplate

T93H/T94H Series - Invacare Transport Only

NOTE: Pivot/Slide Tube and Footplate is attached to Footrest Support using the spring button or bolt thru hardware. See chart titled, "Pivot Slide Tube Attaching Hardware."

Item #9 and #12 Legrest Pivot Slide Tube with Footplate - T94H Series

Item Number	Model Number	Chair Width	Footplate Style	Frame Side	Standard	2" Longer	4" Longer
9.	T94HA/T94H AB - Black	16-22"	Aluminum	Right	1110315	N/A	N/A
9.	T94HA/T94H AB - Black	16-22"	Aluminum	Left	1110316	N/A	N/A
9.	T94HC/T94H CB - Chrome	16-22"	Composite	Right	1110311	N/A	N/A
9.	T94HC/T94H CB - Chrome	16-22"	Composite	Left	1110312	N/A	N/A
12.	T94HA - Chrome	16-22"	Extra Large Aluminum	Right	1110348	N/A	N/A
12.	T94HA - Chrome	16-22"	Extra Large Aluminum	Left	1110349	N/A	N/A

Pivot Slide Tube Attaching Hardware

Style	Part Number	Quantity Per Package	Quantity Per Footrest	Quantity Per Legrest
Spring Button Hardware Kit	1188335 See Note(s) A	2	2	4
Bolt Through Hardware Kit	1101776 See Note(s) A	2	2	2
Tool Kit	1058407 See Note(s) B	1	N/A	N/A

NOTE: A - Kit includes 2 ea. Double Spring Buttons
B - Kit includes allen wrench, key, and open end wrench.