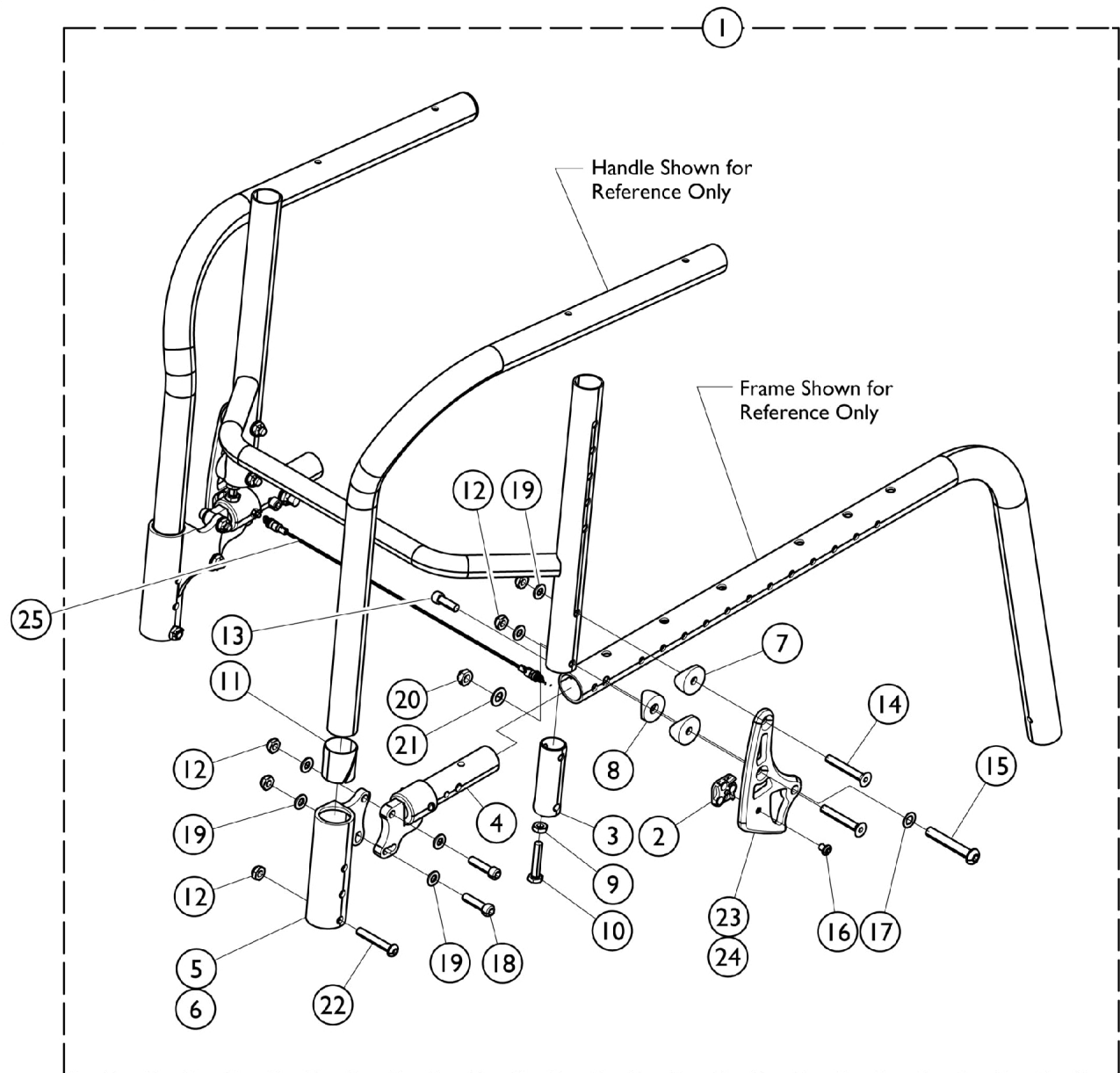


# Backrest Mounting Hardware Swingaway Arms



## Backrest Mounting Hardware Swingaway Arms

| Item Number | Note | Part Number | Description  | Quantity Per |          |
|-------------|------|-------------|--|--------------|----------|
|             |      |             |  | Package      | Assembly |
| 1           | A,B  | 1172585     | Kit, Hardware, Backrest Mounting w/ Arms           | 1            | 1        |
| 2           |      |             | Square, Adjustment                                 | 1            | 2        |
| 3           |      |             | Insert, Cane, Rear                                 | 1            | 2        |
| 4           |      |             | Arm Mounting Assembly, Swingaway Arm - Right       | 1            | 1        |
| 4           |      |             | Arm Mounting Assembly, Swingaway Arm - Left        | 1            | 1        |
| 5           |      |             | NLA - Socket, Arm, Half - Right                    | 1            | 1        |
| 6           |      |             | NLA - Socket, Arm, Half - Left                     | 1            | 1        |
| 7           |      |             | Spacer, Coved (1/4 x 1 x 9/16")                    | 1            | 4        |
| 8           |      |             | Spacer, Coved (3/4 x 1 x 1/2")                     | 1            | 2        |
| 9           |      |             | Nut, Hex, Jam (1/4-28)                             | 1            | 2        |
| 10          |      |             | Screw, Hex (1/4-28 x 1-1/4")                       | 1            | 2        |
| 11          |      |             | Sleeve, Bearing                                    | 1            | 2        |
| 12          |      |             | Locknut (1/4-28)                                   | 1            | 10       |
| 13          |      |             | NLA - Screw, Socket Head, Cap (1/4-28 x 3/4")      | 1            | 2        |
| 14          |      |             | Screw, Socket, Flat Head, (1/4-28 x 1-3/4")        | 1            | 4        |
| 15          |      |             | Screw, Socket Button Head (5/16-18 x 2")           | 1            | 2        |
| 16          |      |             | Screw, Socket, Button Head w/ Patch (10-32 x 1/4") | 1            | 2        |
| 17          |      |             | Washer, Nylon (5/16 x 17/32 x 1/32")               | 1            | 2        |
| 18          |      |             | NLA - Screw, Cap, Socket Head (1/4-28 x 1")        | 1            | 4        |
| 19          |      |             | NLA - Washer, Steel (1/4 x 1/2 x 3/64")            | 1            | 12       |
| 20          |      |             | Locknut (5/16-18)                                  | 1            | 2        |
| 21          |      |             | Washer, Steel (21/64 x 5/8 x 3/64")                | 1            | 2        |
| 22          |      |             | Screw, Socket, Cap, Button Head (1/4-28 x 1-9/16") | 1            | 2        |
| 23          |      |             | NLA - Bracket, Back, Black - Right                 | 1            | 1        |
| 24          |      |             | Bracket, Back, Black - Left                        | 1            | 1        |
| 25          | C    | 1159762-NLA | NLA - Cord, Back Release (12" W)                   | 1            | 1        |
| 25          | C    | 1159763-NLA | NLA - Cord, Back Release (13" W)                   | 1            | 1        |
| 25          | C    | 1159764-NLA | NLA - Cord, Back Release (14" W)                   | 1            | 1        |
| 25          | C    | 1159765-NLA | NLA - Cord, Back Release (15" W)                   | 1            | 1        |
| 25          | C    | 1159766-NLA | NLA - Cord, Back Release (16" W)                   | 1            | 1        |
| 25          | C    | 1159767-NLA | NLA - Cord, Back Release (17" W)                   | 1            | 1        |
| 25          | C    | 1159768-NLA | NLA - Cord, Back Release (18" W)                   | 1            | 1        |
| 25          | C    | 1159769-NLA | NLA - Cord, Back Release (19" W)                   | 1            | 1        |
| 25          | C    | 1159789-NLA | NLA - Cord, Back Release (20" W)                   | 1            | 1        |
|             |      | 1165867     | Kit, Plunger Pin w/ Spring                         | 1            | 1        |
|             |      |             | Pin, Plunger                                       | 1            | 1        |
|             |      |             | Spring, Pin, Plunger (1/4 x 13/16 x .020)          | 1            | 1        |
|             |      | See Chart   | Items 23 and 24 Back Brackets - Right/Left         | 1            | 1        |

NOTE: A - For use with Swingaway Arms. Includes items 2 - 24.  
 B - Item 4 (Swingaway Arm Mounting Assembly) includes a Plunger Pin and Spring.  
 C - The Back Release Cord includes a Split Ring on each end but DOES NOT INCLUDE the Plunger Pins or Springs. It is recommended when ordering a new Back Release Cord, 1165867 (Kit, Plunger Pin w/ Spring) be ordered also.

### Items 23 and 24, Back Brackets - Right/Left

| Color | Black       | Silver  | Blue        | Red         |
|-------|-------------|---------|-------------|-------------|
| Right | 1167083-NLA | 1167081 | 1167084-NLA | 1167082-NLA |

# Backrest Mounting Hardware Swingaway Arms

Items 23 and 24, Back Brackets - Right/Left

| Color | Black   | Silver      | Blue    | Red     |
|-------|---------|-------------|---------|---------|
| Left  | 1167087 | 1167086-NLA | 1167088 | 1167085 |