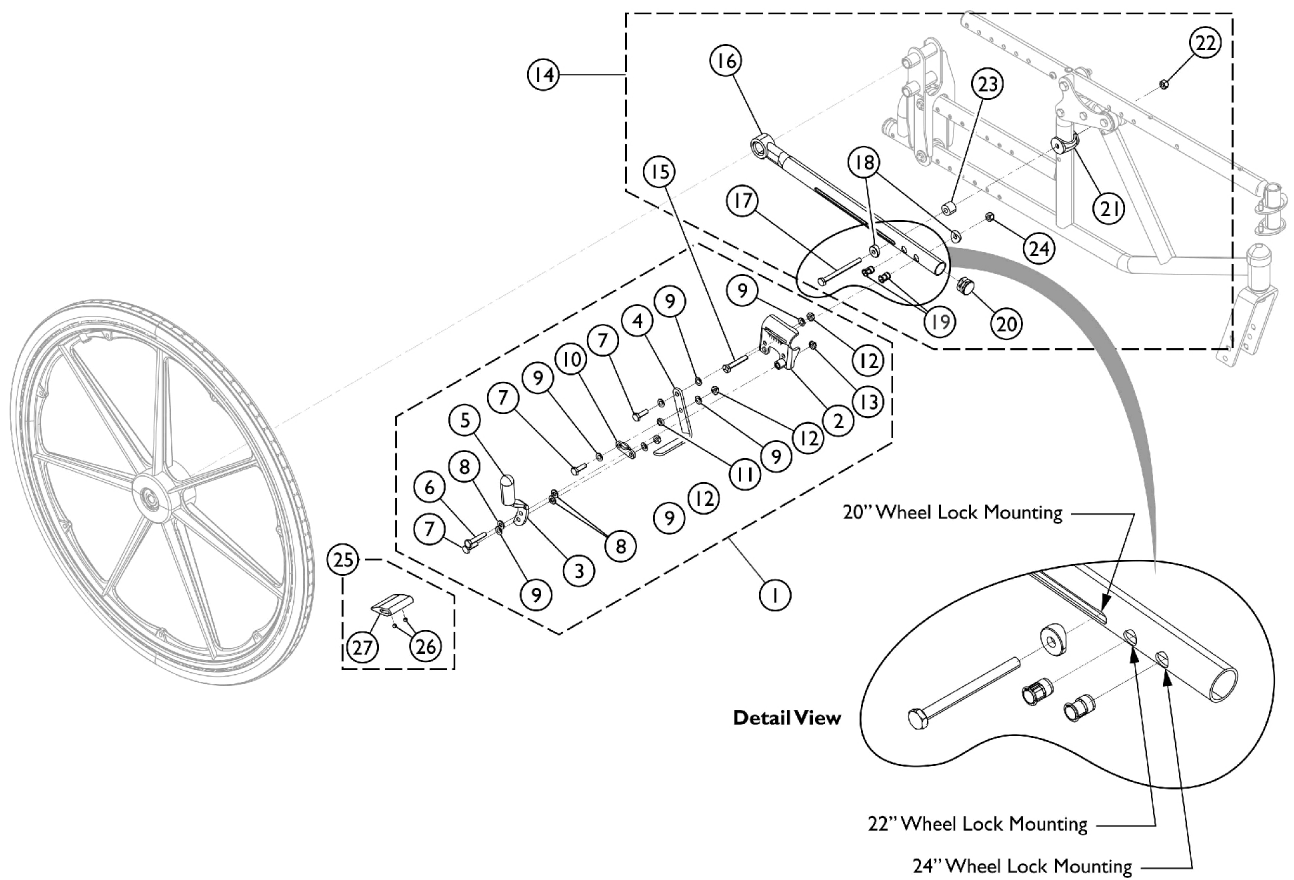


# Wheel Lock w/ Hardware - 20", 22", and 24" Wheels

## Compass SPT Chairs (Push to Lock)

**NOTE:** When the wheels are used for the Front Wheel Configuration (FWDFS) Option, the Wheel Locks will be mounted on the chair backwards to function as a Pull to Lock Wheel Lock.  
Item 1 functions for both RWDFS and FWDFS Options.



SCM\_031A

# Wheel Lock w/ Hardware - 20", 22", and 24" Wheels

## Compass SPT Chairs (Push to Lock)

**NOTE: When the wheels are used for the Front Wheel Configuration (FWDFS) Option, the Wheel Locks will be mounted on the chair backwards to function as a Pull to Lock Wheel Lock.**

**Item 1 functions for both RWDFS and FWDFS Options.**

Item Number	Note	Part Number	Description	Quantity Per	
				Package	Assembly
1	A,B	1031792	Wheel Lock Assembly, Push to Lock, Adult - Right	1	1
1	A,B	1031793	Wheel Lock Assembly, Push to Lock, Adult - Left	1	1
2		1031787-NLA	NLA - Bracket, Mounting, Black - Right	1	1
2		1031788-NLA	NLA - Bracket, Mounting, Black - Left	1	1
3		1021408-NLA	NLA - Handle, Wheel Lock, Black - Right	1	1
3		1021409-NLA	NLA - Handle, Wheel Lock, Black - Left	1	1
4		1021405-NLA	NLA - Shoe, Wheel Lock	1	1
5		47376X024	Tip, Rubber Wheel Lock Handle, Black	1	1
6		1021406	Screw, Hex Head (1/4-20 x 1-1/4")	1	1
7		1028687	Screw, Hex Head (1/4-28 x 3/4")	1	3
8		1026033	Washer, Nylon (1/4 x 1/2 x 1/16")	1	3
9		1026103	Washer, Nylon (1/4 x 1/2 x 1/32")	1	7
10		1021404-NLA	NLA - Link, Black	1	1
11		1026105-NLA	NLA - Spacer, Nylon (1/4 x 7/16 x 1/8")	1	1
12		1025765	Locknut (1/4-28)	1	1
13		1025195	Locknut (1/4-20)	1	1
14	C	1121591-NLA	NLA - Kit, Wheel Lock Attaching Hardware (Pair)	2	1
15	E	1045267	Screw, Hex Head w/ Patch (1/4-20 x 3/4")	1	2
16		1121588	Bar, Wheel Lock, Black	1	1
17		1059374	Screw, Hex Head (1/4-28 x 3")	1	2
18	E	1026099	Spacer, Coved (1/4 x 11/16 x 1/2")	1	2
19	F	1019930-NLA	NLA - Insert, Threaded	1	4
20		1027095	Plug Button, Black (7/8")	1	2
21		1118469	Uni-Washer, Coved	1	2
22		1065362	Locknut (1/4-28)	1	2
23		1112992-NLA	NLA - Spacer (9/32 x 5/8 x 1/2")	1	2
24		1025736	Locknut (1/4-20)	1	2
25	G	1037421	Kit, Wheel Lock Shoe Spacer, 20" Rear Wheels (Pair)	1	1
26			Screw, Set Socket Cup Point (#8-32 x 3/16")	1	4
27			Spacer, Wheel Lock Shoe (2-63/64")	1	2
25	D	1048656	Kit, Wheel Lock Shoe Spacer	1	2
26			Screw, Set Socket Cup Point (#8-32 x 3/16")	1	2
27			Spacer, Wheel Lock Shoe (1-45/64")	1	1

**NOTE:** A - When the wheels are used for the Front Wheel Configuration (FWDFS) Option, the Wheel Locks will be mounted on the chair backwards to function as a Pull to Lock Wheel Lock. Item 1 functions for both RWDFS and FWDFS Options.  
 B - Includes items 2 - 13.  
 C - Includes items 15 - 22.  
 D - Includes items 25 and 26. Used with 20, 22, and 24" Wheels.  
 E - Items 15 (Screw) and item 18 (Coved Spacer) are not required when wheelchair has 20 inch Rear Wheels.  
 F - Part #1019930 is no longer available as a service part individually. See item 14 and order part #1121591 as a replacement.  
 G - Kit includes Shoe Spacer (2) and Set Screws (4). Used on 20" Wheels only.