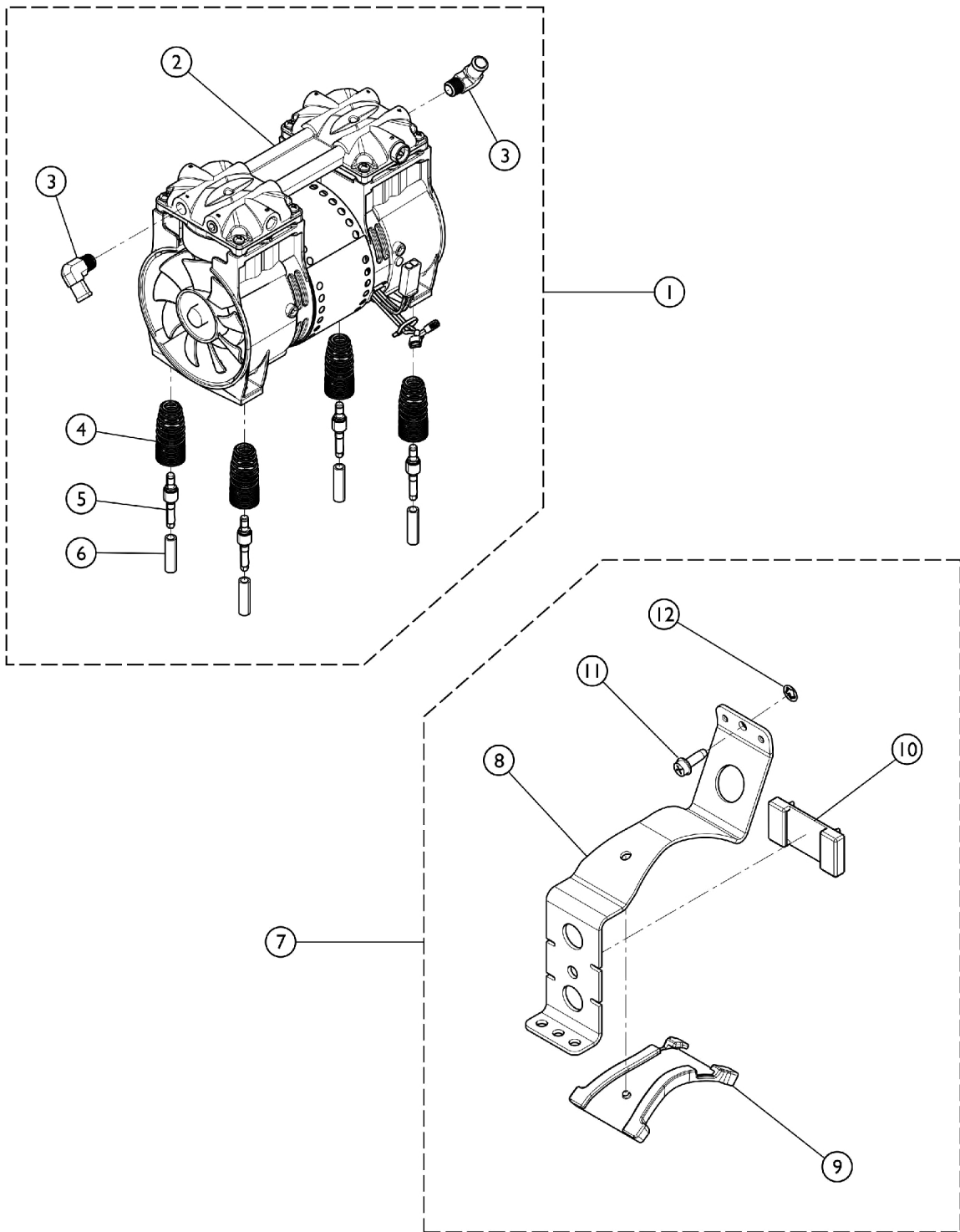


# Compressor and Mounting Hardware Platinum 10

When ordering 1130666 or 1130666E, you must order Kit part number 1186230.



# Compressor and Mounting Hardware

## Platinum 10

When ordering 1130666 or 1130666E, you must order Kit part number 1186230.

Item Number	Note	Part Number	Description	Quantity Per	
				Package	Assembly
1	A	1130666	Compressor Assembly - 10LX/ 10LXO2	1	1
1	E	1130666E	WARR RPLMT - Compressor Assembly - 10LX/ 10LXO2	1	1
	B,C	1153687	Kit, Compressor Rebuild w/ Instructions (2660CE50)	1	1
			Compressor Rebuild Assembly - Thomas	1	1
			Instruction Sheet, Thomas Rebuild 2660-2650	1	1
	C	1128740	Capacitor, 30 MFD	1	1
	C	1089455	Tie Wrap (15-1/4" L)	1	2
	C,G	1188159	Kit, Compressor Rebuild w/ Instructions (ZW400D2)	1	1
			Manual, Sevice (ZW400D2)	1	1
			Cylinder	1	2
			Seal, Piston Cup	1	2
			O-Ring, Head Seal	1	2
			Screw, Valve Plate	1	4
			Washer, Square	1	4
			Washer, Semi-Circle Reinforced Metal	1	2
			Washer, Plastic Semi-Circle Reinforced	1	2
			Washer, Metal Square Reinforced	1	2
			Flapper, Intake Valve (Narrow)	1	2
			Flapper, Exhaust Valve (Wide)	1	2
			O-Ring, Valve Plate	1	2
			Screw, Head	1	8
	C	1128740	Capacitor, 30 MFD	1	1
	C	1089455	Tie Wrap (15-1/4" L)	1	2
2		1128741	Compressor - 10LX/10LXO2	1	1
2		1128741E-NLA	NLA - WARR RPLMT - Compressor - 10LX/10LXO2	1	1
3		1108819	Fitting, Elbow (1/2" Beaded Hose x 1/4" NPT)	1	2
4		1105504-NLA	NLA - Spring, Compressor Mount	1	4
4	H	1150581	Spring, Compressor Mount	1	4
5		1106446-NLA	NLA - Pin, Spring Retainer	1	4
5	H	1150580	Pin, Spring Retainer	1	4
6		1107411	Glide, Pin	1	4
7	D,F	1186230	Kit, Compressor Restraint Bracket w/ Hardware	1	1
8			Bracket, Restraint, Compressor	1	1
9			NLA - Bumper, Bracket	1	1
10			Bumper, Restraint Bracket, Compressor	1	1
11			NLA - Screw, Phillips Hex Washer Head w/ Patch (1/4-20 x 3/4")	1	1
12			Retainer, Push (1/4")	1	1

# Compressor and Mounting Hardware

## Platinum 10

**When ordering 1130666 or 1130666E, you must order Kit part number 1186230.**

NOTE: A - Includes item 2 thru item 7.  
B - When replacing or servicing a Compressor, the Capacitor (1128740) and two Tie Wraps (1089455) must also be replaced.  
Used for Thomas Compressors only.  
C - Not Shown  
D - Kit includes items 8 - 12.  
E - When ordering 1130666E, you must order Kit part number 1186230.  
F - Included with Item 1 (1130666) only.  
G - When replacing or servicing a Compressor, the Capacitor (1128740) and two Tie Wraps (1089455) must also be replaced.  
Used for GSE Compressors (ZW400D2) only.  
H - It is recommended to order item 4 and 5 together. The newer Spring and Pin is now narrower.