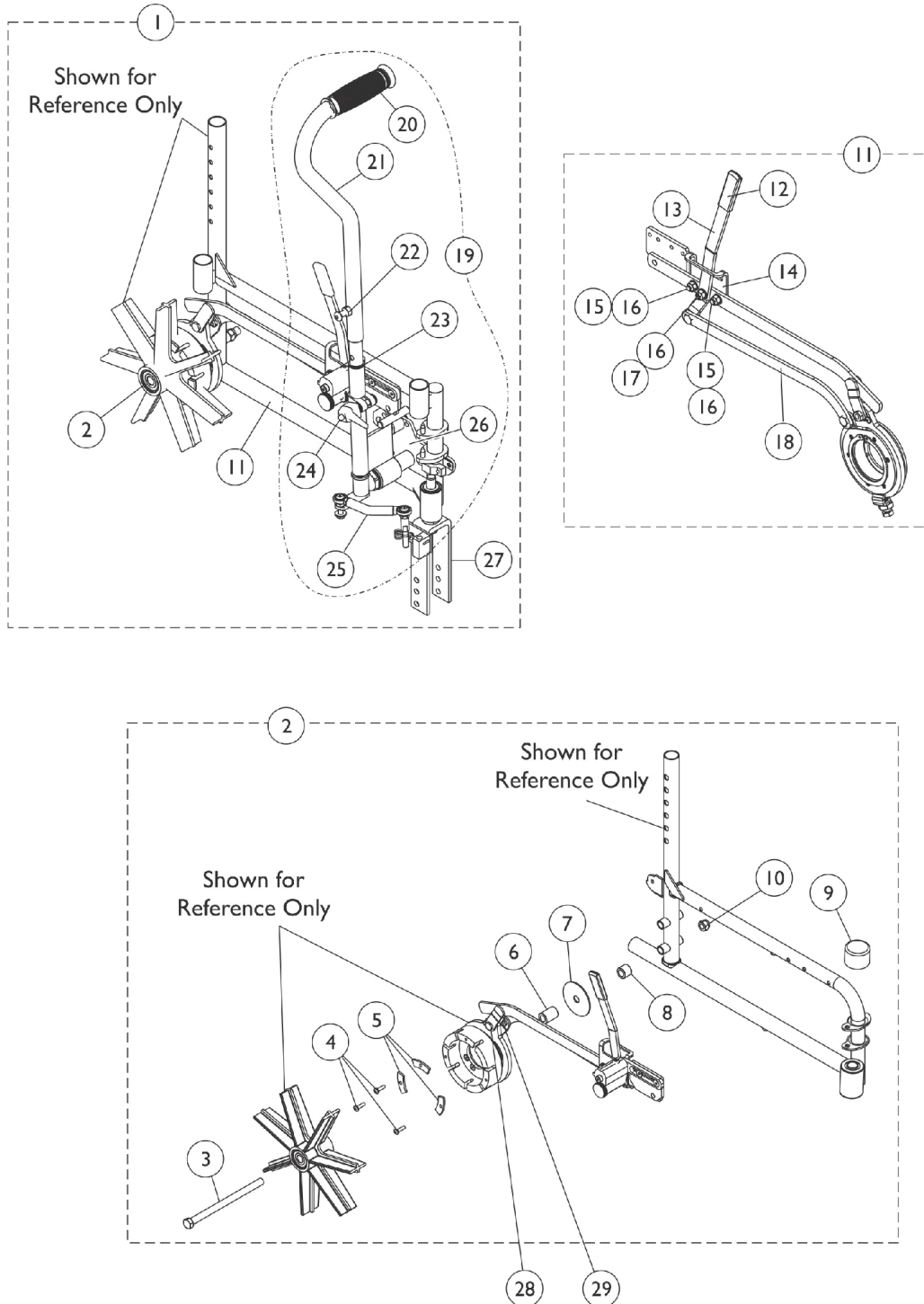


Cyclical Lever Drive - 7 Spoke - 9000SL/XT Only (After 9/01)

NOTE: Installation of the Cyclical Lever Drive (CLD) **MUST** be performed by a qualified dealer. If a non-approved individual performs any work on these units, the Manufacturer's Warranty is Void. If you need to order the rigging for a chair that has a CLD, use this quote as a reference: SM - 060110080604.



Cyclical Lever Drive - 7 Spoke - 9000SL/XT Only (After 9/01)

NOTE: Installation of the Cyclical Lever Drive (CLD) MUST be performed by a qualified dealer. If a non-approved individual performs any work on these units, the Manufacturer's Warranty is Void. If you need to order the rigging for a chair that has a CLD, use this quote as a reference: SM - 060110080604.

Item Number	Note	Part Number	Description	Quantity Per	
				Package	Assembly
1	C,J,A,B	1088151-NLA	NLA - Kit, CLD (6" Caster), Chrome - Right	1	1
1	C,J,A,B	1088152-NLA	NLA - Kit, CLD (6" Caster), Chrome - Left	1	1
1	C,J,A,B	1088153-NLA	NLA - Kit, CLD (8" Caster), Chrome - Right	1	1
1	C,J,A,B	1088154-NLA	NLA - Kit, CLD (8" Caster), Chrome - Left	1	1
1	C,K,A, B	1194293	Kit, CLD (6" Caster), Chrome - Right	1	1
1	C,K,A, B	1194364	Kit, CLD (6" Caster), Chrome - Left	1	1
1	C,K,A, B	1194356	Kit, CLD (8" Caster), Chrome - Right	1	1
1	C,K,A, B	1194358	Kit, CLD (8" Caster), Chrome - Left	1	1
1	C,H,A, B	8881182828-NL A	NLA - Kit, CLD (6" Caster), Color - Right	1	1
1	C,H,A, B	8881182829-NL A	NLA - Kit, CLD (6" Caster), Color - Left	1	1
1	C,H,A, B	8881182830-NL A	NLA - Kit, CLD (8" Caster), Color - Right	1	1
1	C,H,A, B	8881182831-NL A	NLA - Kit, CLD (8" Caster), Color - Left	1	1
2	D	1087540-NLA	NLA - Kit, Hub Attachment Hardware - Rear - Right/Left	1	1
3		1087407-NLA	NLA - Screw, Hex Head (7/16-20 x 6-1/2")	1	1
4		1025716	Screw, Phillips Pan Head (#10-32 x 11/16")	1	3
5		1087504-NLA	NLA - Plate, Support Rear Outer Hub	1	3
6		1087354-NLA	NLA - Spacer, Hub Inner (7/16 x 3/4 x 1-1/16")	1	1
7		1084822-NLA	NLA - Washer, Axle (7/16 x 2-3/8" x 1/16")	1	1
8		1087908-NLA	NLA - Spacer, Hub Outer Rear (7/16 x 3/4 x 19/32")	1	1
9	J	361441	Cap, End, Notched, Black	1	1
9	K	1194429	Cap, End, Notched, Black	1	1
10		1045608	Locknut (7/16-20)	1	1
11	E	1088008	Transmission and Wheel Lock Assembly - Right	1	1
11	E	1088009	Transmission and Wheel Lock Assembly - Left	1	1
12		1087761-NLA	NLA - Knob, Shift Lever, Black	1	1
13		1088200	Lever, Shift, Black	1	1
14		1087738-NLA	NLA - Plate, Shift	1	1
15		1025708-NLA	NLA - Bolt, Hex Head Cap (1/4-20 x 3/4")	1	1
16		1087204-NLA	NLA - Washer, Flat (1/4 x 9/16 x 1/32")	1	1
17		1087752-NLA	NLA - Screw, Socket Head (1/4-20 x 3/4")	1	1
18		1088201-NLA	NLA - Transmission Lever	1	1
19	F	1088115	Drive Arm and Link Steering Assembly - Right	1	1
19	F	1088116	Drive Arm and Link Steering Assembly - Left	1	1
20		1087905-NLA	NLA - Grip, Handle (7/8")	1	1
21		1088108	Handle, Black	1	1

Cyclical Lever Drive - 7 Spoke - 9000SL/XT Only (After 9/01)

NOTE: Installation of the Cyclical Lever Drive (CLD) MUST be performed by a qualified dealer. If a non-approved individual performs any work on these units, the Manufacturer's Warranty is Void. If you need to order the rigging for a chair that has a CLD, use this quote as a reference: SM - 060110080604.

Item Number	Note	Part Number	Description	Quantity Per	
				Package	Assembly
22		1088117	Screw, Socket Button Head (5/16-18 x 1-1/4")	1	1
23		1088110	Plunger	1	1
24		1087420-NLA	NLA - Handle, Adjustment, Tapped Type, Black	1	1
25		1087477	Steering Link Assembly - Right	1	1
25		1087478	Steering Link Assembly - Left	1	1
26		1088097	Support Bracket Assembly - Right	1	1
26		1088098	Support Bracket Assembly - Left	1	1
27	J	1087467	Fork Assembly - Right (6")	1	1
27	J	1087468	Fork Assembly - Left (6")	1	1
27	J	1087469	Fork Assembly - Right (8")	1	1
27	J	1087470	Fork Assembly - Left (8")	1	1
27	K	1194268	Fork Assembly - Right (6")	1	1
27	K	1194297	Fork Assembly - Left (6")	1	1
27	K	1194355	Fork Assembly - Right (8")	1	1
27	K	1194357	Fork Assembly - Left (8")	1	1
28		1087744-NLA	NLA - Bolt, Drive Lever	1	1
29		1087917-NLA	NLA - Nut, Hex (5/16-24)	1	1
	G,I	1087937-NLA	NLA - Instruction Sheet	1	1

NOTE: A - The Cyclical Lever Drive requires the use of treaded rear wheels and is only available on 16", 17" and 18" deep chairs. Hemi seat-to-floor must use space saver arms.
 B - The above options are not available with amputee attachment, offset axle, Super Low seat-to-floor or with adjustable caster journal.
 C - Includes items 2-28. If a customer is changing a CLD from one side to the opposite side, the side that will not have the CLD may need a wheel lock ordered as well.
 D - Includes items 2-10.
 E - Includes items 12-18.
 F - Includes items 20-26.
 G - Not shown.
 H - Specify 71P Silver Vein when ordering. No Longer Available. See Item #1 Chrome CLD Kits as a replacement.
 I - Item is no longer available from the Invacare Service Parts Department. Refer to the Invacare Website under "Product Literature Search". Enter the part number in the "Keywords" field and download a free PDF version copy.
 J - Before 10/12/16.
 K - After 10/11/16.

NOTE: For CLD release handle see page titled, "Fork and Release Handle for Cyclical Lever Drive."