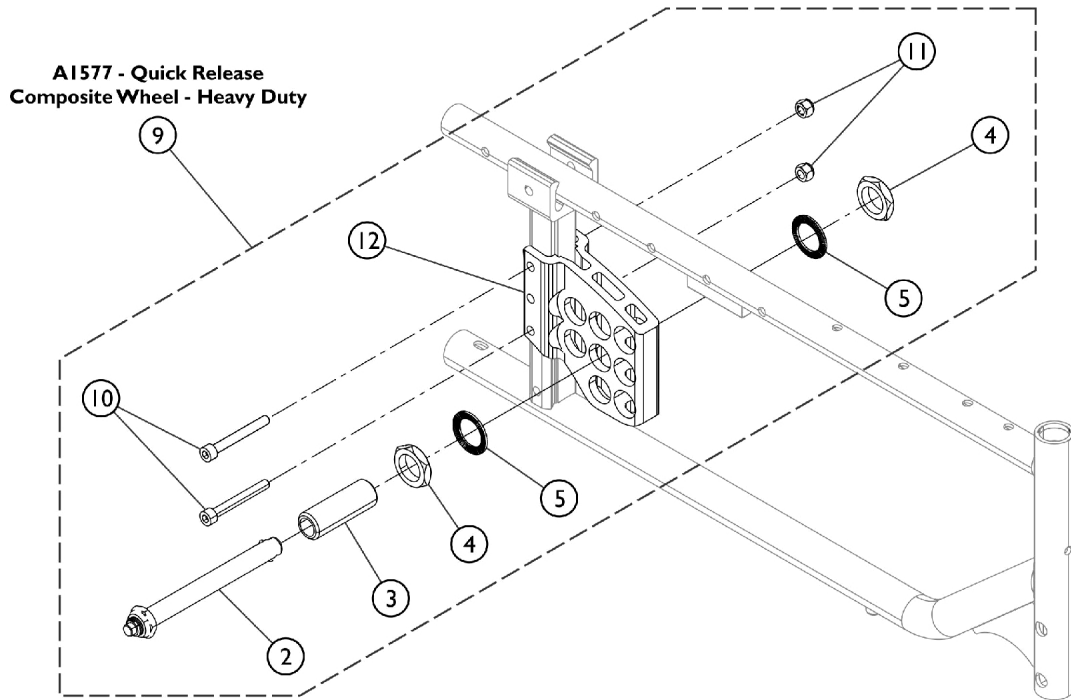
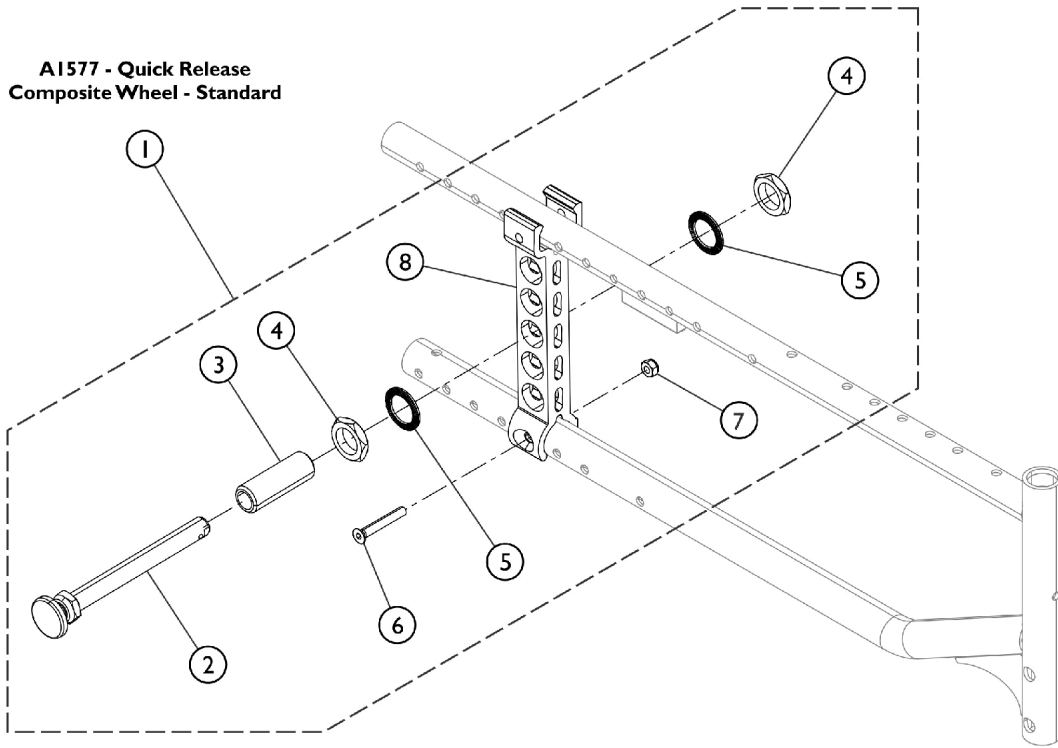


# Axle Plates w/ Hardware (A1577 - Composite Wheels)

## Standard and Heavy Duty

The camber is built into the axle plate. If the flat side is out it is 3 degree.  
If the round surface is outside it is 0 degree.



# Axle Plates w/ Hardware (A1577 - Composite Wheels)

## Standard and Heavy Duty

The camber is built into the axle plate. If the flat side is out it is 3 degree.

If the round surface is outside it is 0 degree.

Item Number	Note	Part Number	Description	Quantity Per	
				Package	Assembly
1	A	1169077	Kit, Hardware, Quick Release Axle Plate (Pair)	1	1
2			Axle, Quick Release Suspension	1	2
3			Bushing, Axle, Threaded	1	2
4			Nut, Hex, Jam (3/4-16)	1	4
5			Washer, Serrated (M20.3 x 30mm x 1.5mm)	1	4
6			Screw, C-Sunk Head (M6 x 1 x 40mm)	1	2
7			NLA - Locknut (M6 x 1)	1	2
8			Plate, Quick Release Axle	1	2
9	B	1523612	Axle Release Plate Assembly w/ Hardware, Quick Extended (Pair)	1	1
2			Quick Release Suspension Axle	1	2
3			Bushing, Axle, Threaded	1	2
4			Nut, Hex, Jam (3/4-16)	1	4
5			Washer, Serrated (M20.3 x 30mm x 1.5mm)	1	4
10			Screw, Socket Head (M6 x 50)	1	4
11			Nut, w/ Insert, HFR (M6)	1	4
12			Bracket, Axle, Quick Release - Right	1	1
12			Bracket, Axle, Quick Release - Left	1	1

NOTE: A - Kit includes items 2 - 8.  
 B - Kit includes items 2, 3, 4, 5, and items 10, 11, and 12.