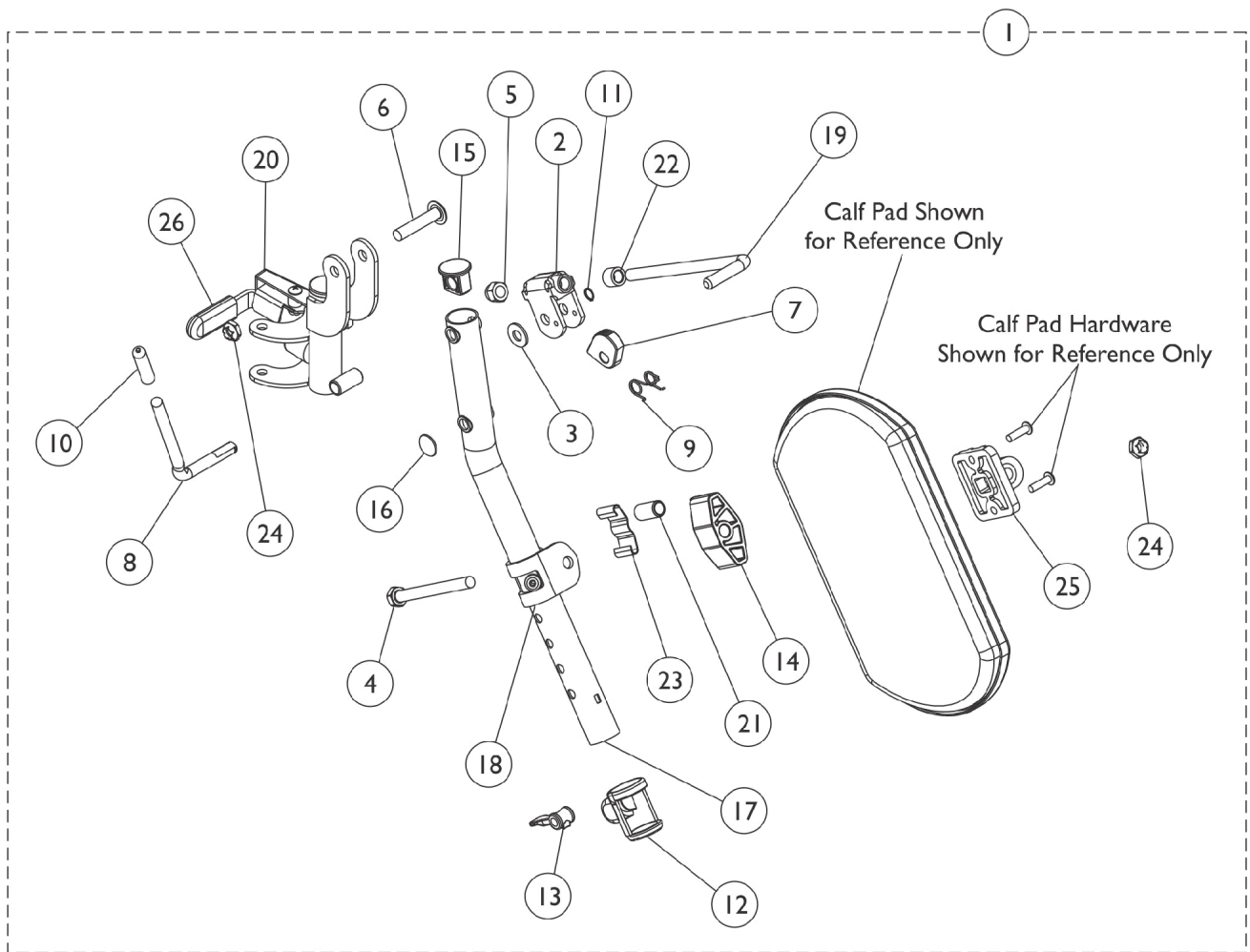


# Legrest Support Assembly

## T94H Series Before 5/16/19

**NOTE: If your chair was built with a serial # starting with "03H" or "03I", please contact an Invacare Parts Specialist for replacement parts at 1-800-333-6900 Ext. 3722.**



# Legrest Support Assembly

## T94H Series Before 5/16/19

**NOTE: If your chair was built with a serial # starting with "03H" or "03I", please contact an Invacare Parts Specialist for replacement parts at 1-800-333-6900 Ext. 3722.**

Item Number	Note	Part Number	Description	Quantity Per	
				Package	Assembly
1	F,A	1110338	Legrest Support Assembly, Hemi, Black - Right	1	1
1	F,A	1110339	Legrest Support Assembly, Hemi, Black - Left	1	1
1	A	1110336	Legrest Support Assembly, Hemi, Black - Right	1	1
1	A	1110337	Legrest Support Assembly, Hemi, Black - Left	1	1
1	D,A	8881180761	Legrest Support Assembly, Hemi, Color - Right	1	1
1	D,A	8881180762	Legrest Support Assembly, Hemi, Color - Left	1	1
2		04528X002	Bracket, Release, Black	1	1
2		1110308	Bracket, Release, Black	1	1
3		1013519	Washer, Nylon (5/16 x 11/16 x 1/16")	1	1
4		1014807	Screw, Hex Head (5/16-24 x 3-1/4")	1	1
5		10261X000	Nut, Acorn (5/16-24)	1	1
6		1030948	Screw, Slotted Truss Head (5/16-24 x 1-1/2")	1	1
7		1037125	Cam, Legrest	1	1
8		1037126	Handle, Release	1	1
9		1037485	Spring, Release	1	1
10		1040060	Tip, Plastic, Black	1	1
11		1040831	Ring, Snap	1	1
12		1048085	Housing, Cam	1	1
13		1048086	Lever, Cam, Black	1	1
14		1091220	Spacer, Legrest	1	1
15		1095433	Plug Button, Black (7/8")	1	1
16	B	1096773	Nut, Push Dome (5/16")	1	1
17	E,B	1110165-NLA	NLA - Tube, Elevating Support, Chrome - Right	1	1
17	E	1110166-NLA	NLA - Tube, Elevating Support, Chrome - Left	1	1
17	B	1110163	Tube, Elevating Support, Black - Right	1	1
17		1110164	NLA - Tube, Elevating Support, Black - Left	1	1
18	E	1110208-NLA	NLA - Bracket, Calf Pad Mounting, Chrome	1	1
18		1110207	Bracket, Calf Pad Mounting, Black	1	1
19		42326X001	Bar, Ratchet	1	1
20	E,C	1110334-NLA	NLA - Legrest Support Tube Assembly, Hemi, Black - Right	1	1
20	E,C	1110335	Legrest Support Tube Assembly, Hemi, Black - Left	1	1
20	B	1110332	NLA - Legrest Support Tube Assembly, Hemi, Black - Right	1	1
20		1110333	Legrest Support Tube Assembly, Hemi, Black - Left	1	1
21		47328X003	Bushing, Pivot (5/16 x 7/16 x 7/8")	1	1
22		47330X003	Spacer (5/16 x 1/2 x 3/8")	1	1
23		48823X008	Spring, Leaf	1	1
24		1107321	Nut, Low Cap (5/16"-24)	1	2
25		04526X019	Plate, Legrest Pad	1	1
26		1006490-NLA	NLA - Tip, Plastic, Black	1	1
26		1127688	Package, Plastic Tip, Black	10	1

# Legrest Support Assembly

## T94H Series Before 5/16/19

**NOTE: If your chair was built with a serial # starting with "03H" or "03I", please contact an Invacare Parts Specialist for replacement parts at 1-800-333-6900 Ext. 3722.**

NOTE: A - Includes items 2-26.  
B - No longer available as a service part individually. Order item #1 as a replacement.  
C - Assembly includes: tip, bumper, screws, plug, spring, nuts, handle release, legrest support and bushing.  
D - Specify 71P Silver Vein frame finish when ordering.  
E - Item #17, 18 and 20 are not for sale on color frame models. See item #1 as a replacement.  
F - After 10/14/14 color changed from Chrome to Black. It is recommended to order both the right and left side to match.