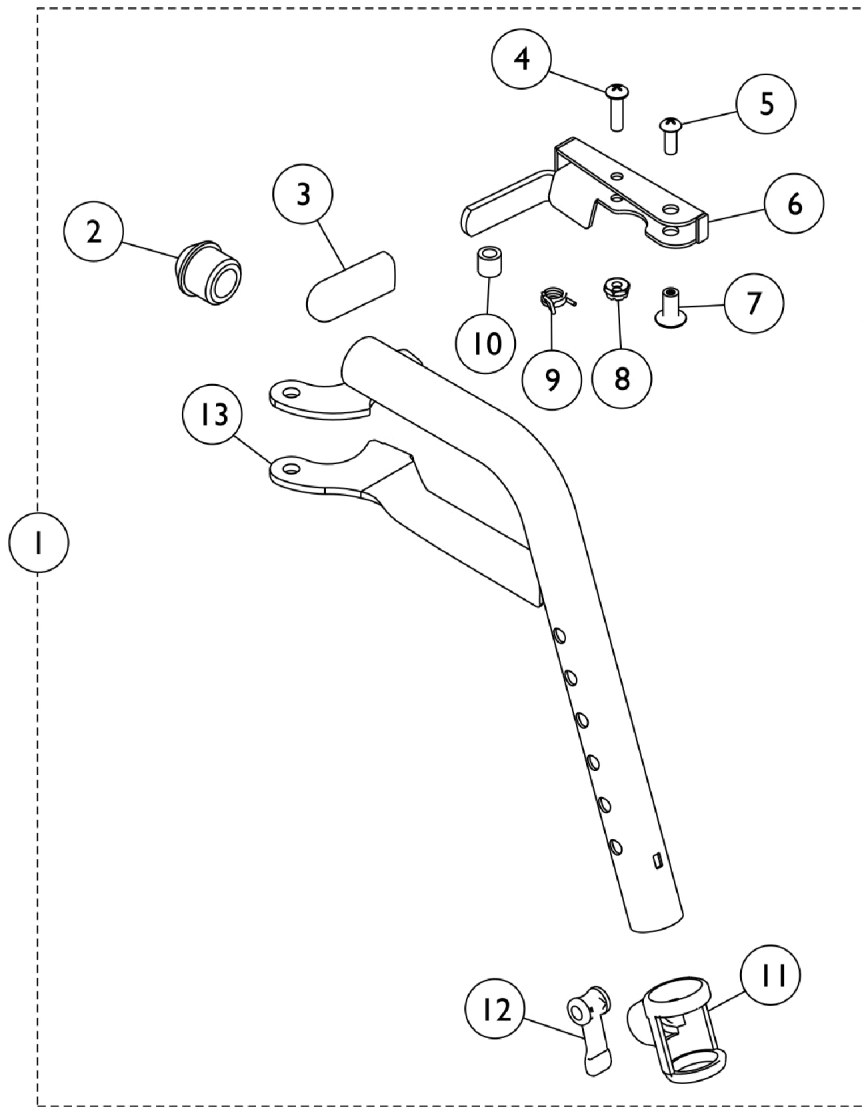


Footrest Support Assembly

T93H Series Before 5/16/19

NOTE: If your chair was built with a serial # starting with "03H" or "03I", please contact an Invacare Parts Specialist for replacement parts at 1-800-333-6900 Ext. 3722.



Footrest Support Assembly

T93H Series Before 5/16/19

NOTE: If your chair was built with a serial # starting with "03H" or "03I", please contact an Invacare Parts Specialist for replacement parts at 1-800-333-6900 Ext. 3722.

Item Number	Note	Part Number	Description	Quantity Per	
				Package	Assembly
1	A	1111274	Footrest Support Assembly, Hemi, Black - Right	1	1
1	A	1111275	Footrest Support Assembly, Hemi, Black - Left	1	1
1	B	8881180774	Footrest Support Assembly, Hemi, Color - Right	1	1
1	B	8881180775	Footrest Support Assembly, Hemi, Color - Left	1	1
2		1020719	Anti-Rattle, Black	1	1
3		1006490-NLA	NLA - Tip, Plastic, Black	1	1
4		40163X008	Screw, Phillips Pan Head (#10-32 x 11/16")	1	1
5		40163X002	Screw, Phillips Round Head (#10-32 x 1/2")	1	1
6	C,D	1110176-NLA	NLA - Handle, Release, Chrome - Right	1	1
6	C,D	1110177-NLA	NLA - Handle, Release, Chrome - Left	1	1
6	E	1110178	Handle, Release, Black - Right	1	1
6	E	1110179	Handle, Release, Black - Left	1	1
7		67005X000	Rivnut (#10-32)	1	1
8		60279X003	Locknut (#10-32)	1	1
9		1008935	Spring, Release - Right	1	1
9		1008936	Spring, Release - Left	1	1
10		47565X057	Bushing (7/32 x 3/8 x 11/32")	1	1
11		1048085	Housing, Cam	1	1
12		1048086	Lever, Cam, Black	1	1
13	C,D	1111270-NLA	NLA - Tube, Footrest Support, Hemi, Chrome - Right	1	1
13	C,D	1111271-NLA	NLA - Tube, Footrest Support, Hemi, Chrome - Left	1	1
13	E	1111268	Tube, Footrest, Support, Hemi, Black - Right	1	1
13	E,F	1111269	NLA - Tube, Footrest, Support, Hemi, Black - Left	1	1

NOTE: A - Includes Items 2-13. After 10/14/14 color changed from Chrome to Black. It is recommended to order both the right and left side to match.
 B - Includes items 2-13. Specify 71P Silver Vein frame finish when ordering.
 C - Item #6 and 13 are not available for sale on color frame models. See item #1 as a replacement.
 D - Before 10/15/14 color was Chrome.
 E - After 10/14/14 color is Black.
 F - Item #13 part number 1111269 is no longer available. Order item #1 as a replacement.