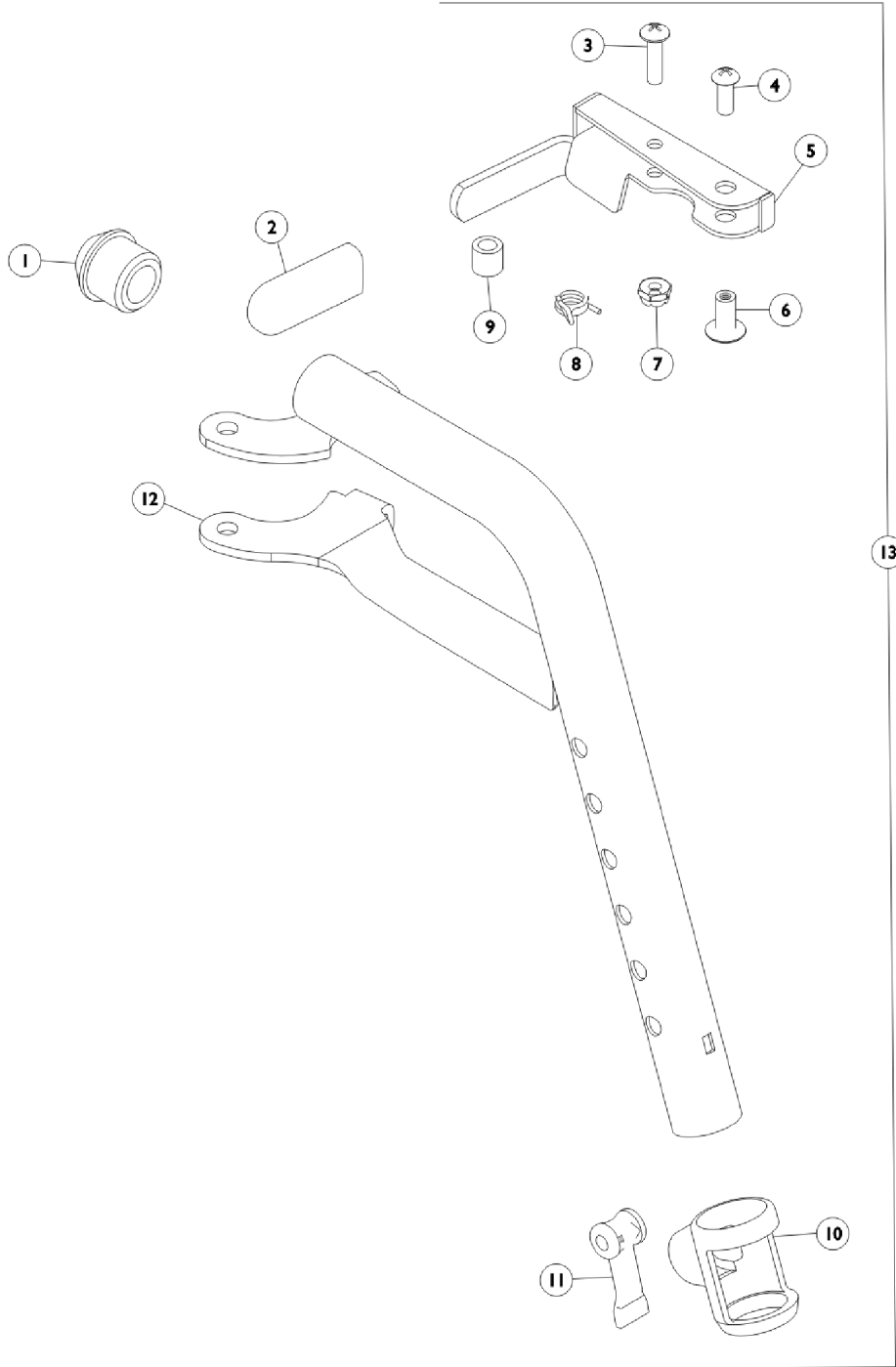


# Footrest Support Assembly

T93H Series Before 5/16/19



## Footrest Support Assembly T93H Series Before 5/16/19

Item Number	Note	Part Number	Description	Quantity Per	
				Package	Assembly
1		1020719	Anti-Rattle, Black	1	1
2		1006490	Tip, Plastic, Black	1	1
3	B,C	1025716	Screw, Phillips Pan Head (#10-32 x 11/16")	1	1
3	D	40163X008	Screw, Phillips Pan Head (#10-32 x 11/16")	1	1
4	B,C	1026114	Screw, Phillips Pan Head (#10-32 x 1/2")	1	1
4	D	40163X002	Screw, Phillips Round Head (#10-32 x 1/2")	1	1
5	B,C,J	1110178	Handle, Release, Black - Right	1	1
5	B,C,J	1110179	Handle, Release, Black - Left	1	1
5	D,H,I	1110176-NLA	NLA - Handle, Release, Chrome - Right	1	1
5	D,H,I	1110177-NLA	NLA - Handle, Release, Chrome - Left	1	1
5	F,H	1087698-NLA	NLA - Handle, Release, Chrome - Right	1	1
5	F,H	1087699-NLA	NLA - Handle, Release, Chrome - Left	1	1
6	B,C	1028846-NLA	NLA - Rivnut (#10-32)	1	1
6	D	67005X000	Rivnut (#10-32)	1	1
7	B,C	1025735	Locknut (#10-32)	1	1
7	D	60279X003	Locknut (#10-32)	1	1
8	B,C	1028707	Spring, Release - Right	1	1
8	B,C	1028708	Spring, Release - Left	1	1
8	D	1008935	Spring, Release - Right	1	1
8	D	1008936	Spring, Release - Left	1	1
9		47565X057	Bushing (7/32 x 3/8 x 11/32")	1	1
10		1048085	Housing, Cam	1	1
11		1048086	Lever, Cam, Black	1	1
12	J	1111268	Tube, Footrest, Support, Hemi, Black - Right	1	1
12	G,J,K	1111269-NLA	NLA - Tube, Footrest, Support, Hemi, Black - Left	1	1
12	H,I	1111270-NLA	NLA - Tube, Footrest Support, Hemi, Chrome - Right	1	1
12	H,I	1111271-NLA	NLA - Tube, Footrest Support, Hemi, Chrome - Left	1	1
13	A	See Chart	Item #13 Footrest Upper Support Assembly - T93H Series	1	1
	F	1087698-NLA	NLA - Handle, Release, Chrome - Right	1	1

NOTE: A - Includes items 1 thru 12.  
 B - For use on Black wheelchairs.  
 C - For use on Color wheelchairs.  
 D - For use on Chrome wheelchairs.  
 F - Not Shown. Order this item when ordering wheelchair with Cyclical Drive only.  
 G - No longer available individually. See Item number 13 for replacement.  
 H - Item #5 and #12 are not available for sale in color. See item #13 as a replacement for wheelchairs without Cyclical Drive Option.  
 I - Before 10/15/14 color was Chrome.  
 J - After 10/14/14 color is Black.  
 K - Item #12 part number 1111269 is no longer available. Order item #13 as a replacement.

# Footrest Support Assembly

T93H Series Before 5/16/19

## Item #13 Footrest Upper Support Assembly - T93H Series

Prior Model Number	Current Model Number	Chair Width	Right Side	Left Side
N/A	T93H A/S/C/AB/CB/SB Color	14 - 22"	8881118241 See Note(s) A	8881118242 See Note(s) A
N/A	T93H A/S/C/AB/CB/SB Black	14 - 22"	1111272	1111273
N/A	T93H A/S/C/AB/CB/SB Black	14 - 22"	1111274 See Note(s) C	1111275 See Note(s) C
N/A	T93H A/S/C/AB/CB/SB Color	14 - 22"	8881180774 See Note(s) B	8881180775 See Note(s) B

NOTE: A - Specify frame finish when ordering. See category titled, "Frame Finishes, Upholstery Colors, Decals and Packaging."  
 B - Specify 71P Silver Vein frame finish when ordering.  
 C - After 10/14/14 color changed from Chrome to Black. It is recommended to order both the right and left side to match.