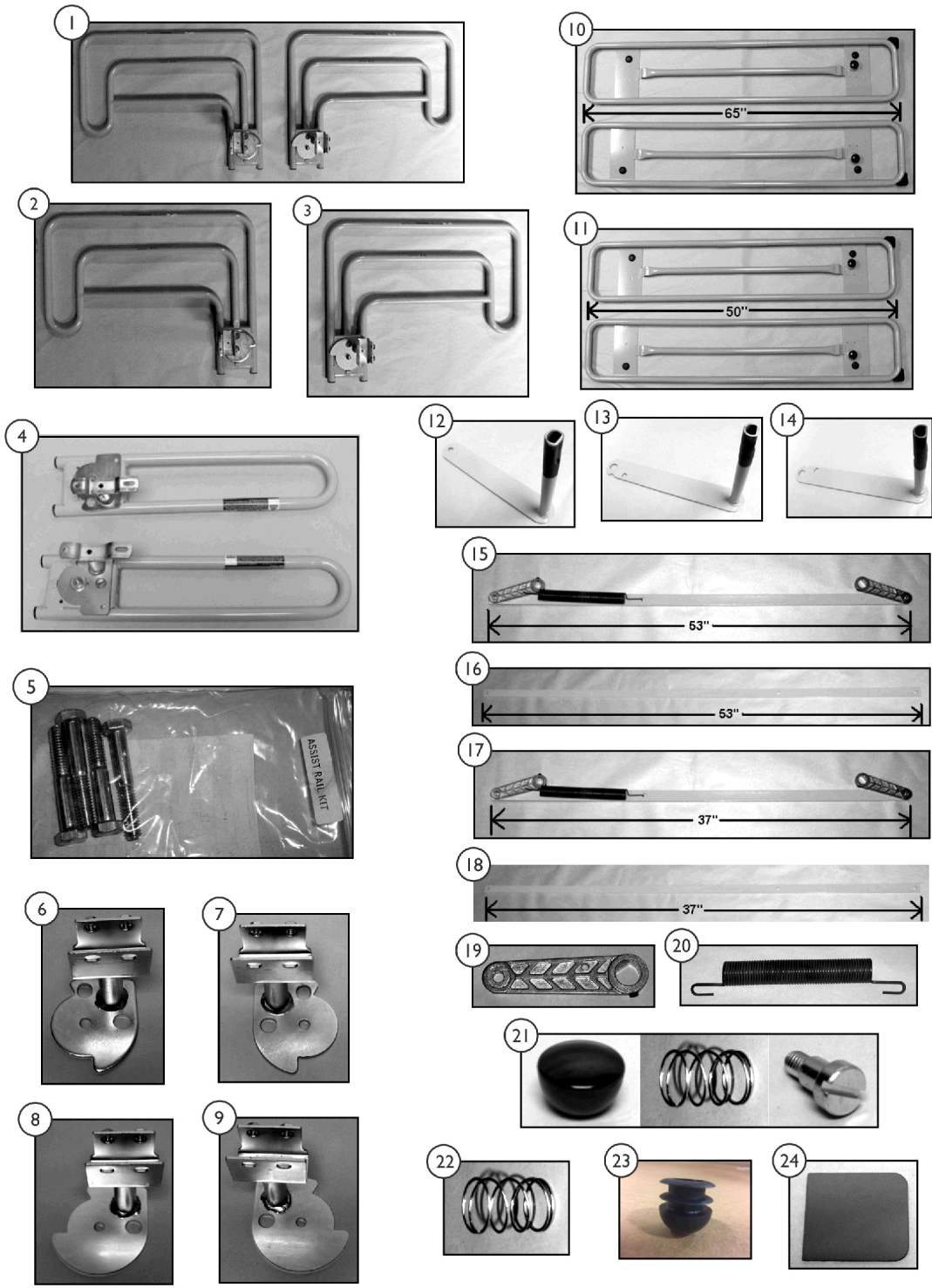


# Bed Rails - BD2380/76



SICC\_117A

## Bed Rails - BD2380/76

Item Number	Note	Part Number	Description	Quantity Per	
				Package	Assembly
1		RAILSASSTAEP R	Assist Rails (Pair), "U" Bracket Style	2	1
2		RAILSASSTAEL T-NLA	NLA - Assist Rail - Left Side	1	1
3		RAILSASSTAER T-NLA	NLA - Assist Rail - Right Side	1	1
4		RAILSBARPRU- NLA	NLA - Assist Bars (Pair), "U" Bracket	2	1
5		KITASSISTR1	Kit, Assist Rail Mounting Hardware	1	1
6		RLBRACKASTR UP-NLA	NLA - U Bracket, No Guard - Left Hand Only	1	1
7		RRBRACKASSI ST-NLA	NLA - U Bracket, Three Position - Right Only	1	1
8		RLBRACKASTR UP-NLA	NLA - U Bracket, No Guard - Left Hand Only	1	1
9		RRBRACKASTR UP-NLA	NLA - U Bracket, No Guard - Right Hand Only	1	1
10		IHECRLFUL-NL A	NLA - Full Rails (Pair)	2	1
		RAILS0080FE1L -NLA	NLA - Full Rail, Left Side	1	1
		RAILS0080FE1R -NLA	NLA - Full Rail, Right Side	1	1
11		IHECRLPAR-NL A	NLA - Partial Rails (Pair)	2	1
		RAILS0080PE1L -NLA	NLA - Partial Rail, Left Side	1	1
		RAILS0080PE1 R-NLA	NLA - Partial Rail, Right Side	1	1
12		SRA0001-NLA	NLA - Short Rail Arm, Right/Left	1	1
13		LRA0001L-NLA	NLA - Long Rail Arm, Left	1	1
14		LRA0001R-NLA	NLA - Long Rail Arm, Right	1	1
15		RLNK0001FASS Y-NLA	NLA - Rail Linkage Assembly, Full	1	1
16		RLNK0001FPNT -NLA	NLA - Rail Linkage, Full Rail	1	1
17	A	RLNK0001PASS Y-NLA	NLA - Rail Linkage Assembly, Partial	1	1
18		RLNK0001PPNT -NLA	NLA - Rail Linkage, Partial Rail	1	1
19	B	HRL0001A	Head End Side Rail Linkage	1	1
20		SPRML324A-NL A	NLA - Spring, Extension	1	1
21		1189259	Kit, Knob - Latch	1	1
			Screw, Shoulder Slotted Head (1/2 x 1/2", 3/8-16)	1	1
			Spring, Compression (3/4 x 1 x 3/64")	1	1
			Knob, LATCH-0002 (3/8-16 x 1-3/8")	1	1
22		1186856	Spring, Compression (3/4 x 1 x 3/64")	1	2
23		1165068	Package, End Plug	10	1
24		RDFL0001-NLA	NLA - Deflector, Rail	1	1

# Bed Rails - BD2380/76

NOTE: A - Specify Left or Right Side.  
B - Order through SFI Medical Solutions