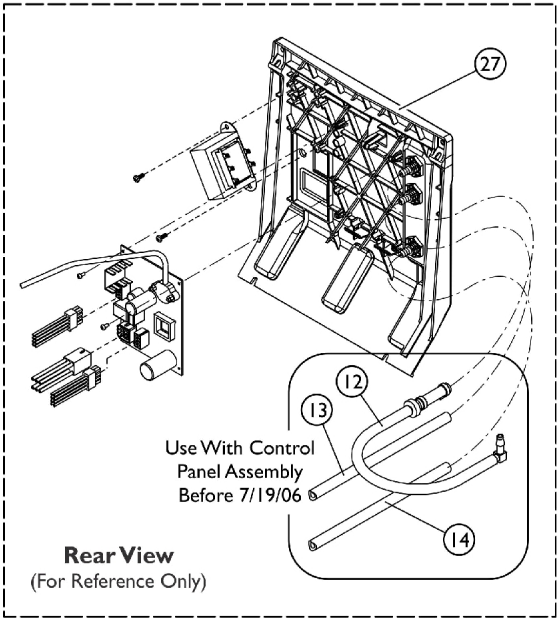
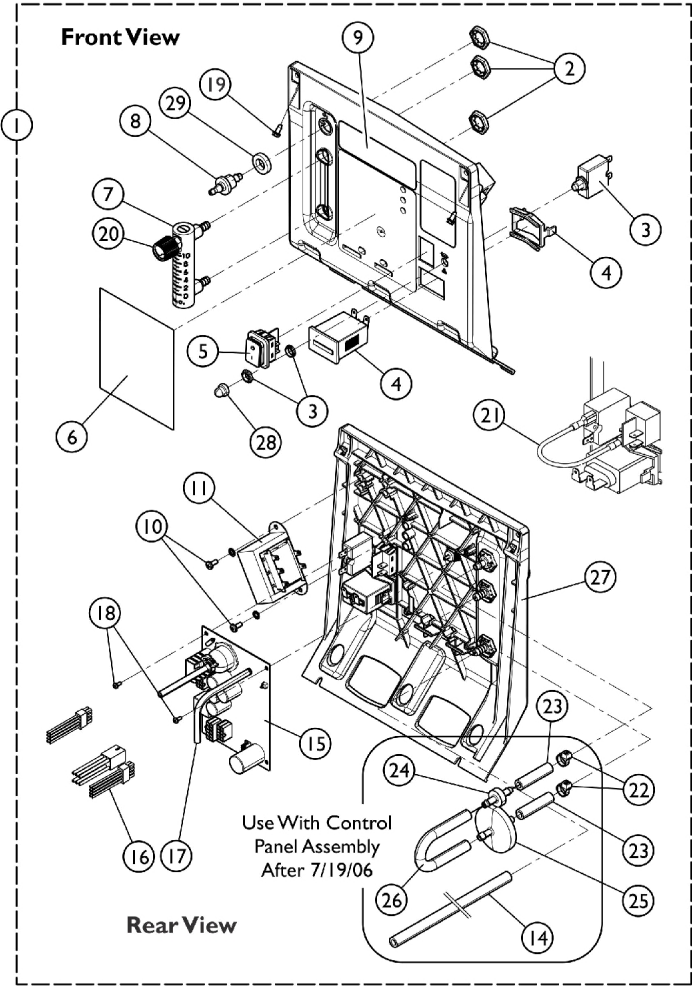


Control Panel and P.C. Board Platinum 10



Control Panel and P.C. Board Platinum 10

Item Number	Note	Part Number	Description	Quantity Per	
				Package	Assembly
1		1132056-NLA	NLA - Control Panel Assembly - 10LX	1	1
1		1130682	Control Panel Assembly - 10LXO2	1	1
2		2000507	Palnut (9/16-18)	1	3
3		1056554	Circuit Breaker (8 AMP)	1	1
4		1098707	Hour Meter Assembly with Clip	1	1
5		1139950	Switch, Powe On/Off	1	1
6		1130062-NLA	NLA - Label, Control Panel - 10LX	1	1
6		1125073	Label, Control Panel - 10LXO2	1	1
7	D,E	1128739-NLA	NLA - Flowmeter without Palnuts	1	1
7	D	1135961	Flowmeter Assembly	1	1
8		1180107	Connector, Barbed, Brass (1/4")	1	1
9		1128738	Label, Logo	1	1
10		1102696	Screw, Phillips Pan Head SEMS (#8-32 x 3/8")	1	2
11		1085200	Transformer Assembly	1	1
12	A,H	1110779-NLA	NLA - Tubing Assembly, Check Valve Discharge	1	1
13	H	1108815-NLA	NLA - Tubing, Silicon (1/4 x 16-1/4")	1	1
14		1108809	Tubing, PVC (1/4 x 12-3/4")	1	1
15		1128737-NLA	NLA - PCB Control Assembly - 10LX	1	1
15	I	1194797	PCB Control Assembly, 10LXO2	1	1
15	J	1128742-NLA	NLA - PCB Control Assembly - 10LXO2	1	1
15		1128742E	WARR RPLMT - PCB Control Assembly - 10LXO2	1	1
16		1108737	Harness, Wire, 10 Pin	1	1
17		1076275	Tubing, Tygon (1/8 x 18")	1	1
18		2001902-NLA	NLA - Screw, Phillips Pan Head (#4-40 x 1/4")	1	2
19		1128404	Screw, Phillips Hex Washer Head (#8-32 x 3/8")	1	2
19		2003065-NLA	NLA - Screw, Phillips Hex Washer Head (#8-32 x 3/8")	1	2
20	C	1128379-NLA	NLA - Package, Knob, Flowmeter, Silver w/ Black Swish (Pkg. of 10)	10	1
20	B	1128380	Package, Knob, Flowmeter, Black w/ Silver Swish	10	1
21		2001764	Jumper Wire Assembly	1	1
22	F,G	2001682	Tie Wrap (8" L)	1	2
23	F,G	1110473	Tubing, PVC (1/4 x 1-3/4")	1	2
24	F,G	2000436	Check Valve, Barb (5/16")	1	1
25	F,G	P0750X030	Filter, Patient HEPA Outlet	1	1
26	F,G	1143144	Tubing, PVC (1/4 x 5")	1	1
27		1081276	Control Panel Only	1	1
28		1112562-NLA	NLA - Tech Only - Seal, Circuit Breaker	1	1
29		1194537	Washer, Foam	1	1

Control Panel and P.C. Board Platinum 10

NOTE: A - Includes Tubing, Check Valve, Elbow and Tie Wrap.
B - Knob is black with silver "swish". Used on Flowmeters with a Slotted Head Screw on top.
C - Knob is silver with black "swish". Used on Flowmeters with an Indented Phillips Head Screw on top.
D - When replacing Flowmeter Assembly Part #1135961 in units built (Before 4/06), it is required that the Patient Outlet Pressure be increased to 9psi. Contact Invacare Technical Support at 1-800-832-4707 for more details.
E - Flowmeter 1128739 is no longer available, refer to Part #1135961 for replacement.
F - "After 7/19/06" the location of the HEPA Filter has changed. The HEPA Filter is now located inside the cabinet.
G - For use with Control Panel Assembly (After 7/19/06).
H - For use with Control Panel Assembly (Before 7/20/06).
I - For use with Control Panel Assembly built (After 9/30/16).
J - For use with Control Panel Assembly built (Before 10/01/16).