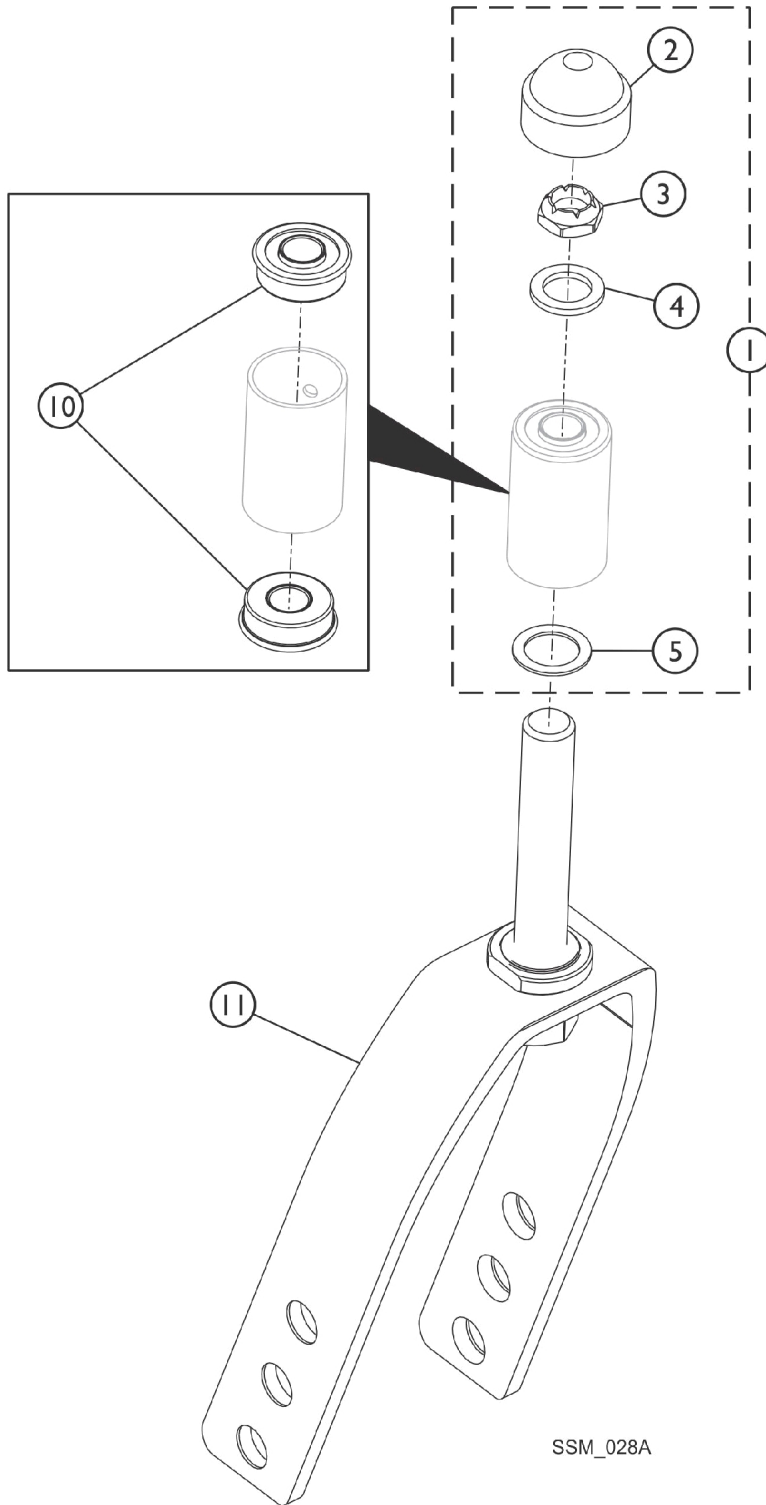


Forks and Hardware

NOTE: If your chair was built with a serial # starting with "03H" or "03I", please contact an Invacare Parts Specialist for replacement parts at 1-800-333-6900 Ext. 3722.



SSM_028A

Forks and Hardware

NOTE: If your chair was built with a serial # starting with "03H" or "03I", please contact an Invacare Parts Specialist for replacement parts at 1-800-333-6900 Ext. 3722.

Item Number	Note	Part Number	Description	Quantity Per	
				Package	Assembly
1	A,D	1089104	Kit, Fork Hardware (Pair)	1	1
2			Cap, Head Tube, Black	1	1
3			Locknut (1/2-20)	1	1
4			Washer, Nylon (5/8 x 1 x 3/32")	1	1
5			Washer, Steel (17/32 x 3/4 x 1/32")	1	1
2	D	1001843	Cap, Head Tube, Black	1	1
2	D	1131189	Package, Head Tube Cap	10	1
1	E	1194269	Kit, Fork Hardware (Pair)	1	1
2			Cap, Head Tube, Black	1	2
3			Locknut (1/2-20)	1	2
2	F	1192854	Cap, Head Tube, Black	1	1
10	D	1001801	Bearing, Flange (1/2")	1	2
10	F	1192848	Bearing, Flange (5/8")	1	2
11	B,D	1089103	Fork and Stem, Aluminum, Black (8" Caster)	1	1
11	B,F	1194266	Fork and Stem, Aluminum, Black (8" Caster)	1	1

NOTE: A - Includes Items 2-5.
 B - Invacare recommends ordering the fork in a quantity of 2.
 D - Before 10/12/16 bearing size was 1/2" (Before 02/21/17 applies to stock models T4_WCB22 and T4_WCB24 only).
 E - After 10/11/16 bearing size changed to 5/8" (After 02/20/17 applies to stock models T4_WCB22 and T4_WCB24 only).
 Includes items 2 and 3. Item 4 and 5 not used After 10/11/16 and (After 02/20/17 for stock models T4_WCB22 and T4_WCB24 only).
 F - After 10/11/16.