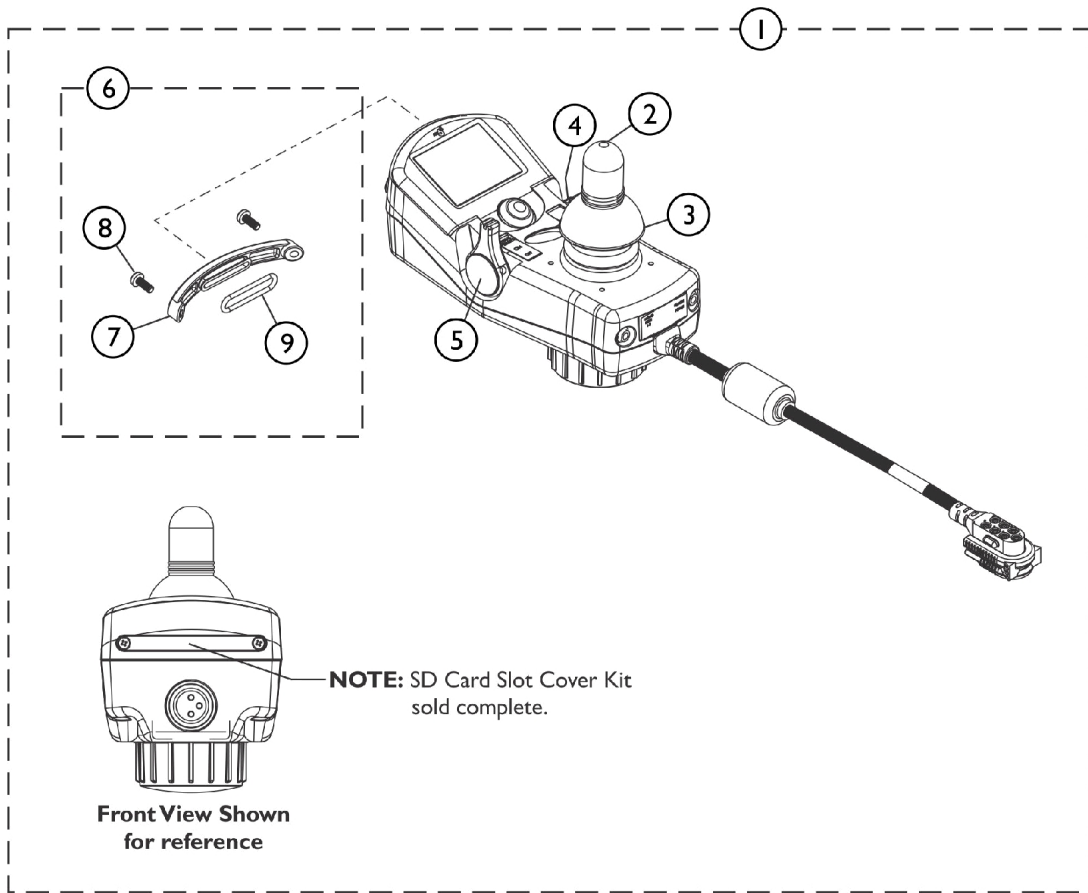
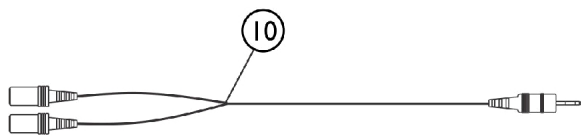


Joystick and Joystick Cables

CMPJ+ (CMPJM6) S/N D16213304-D16213602, S/N H16146144 and After



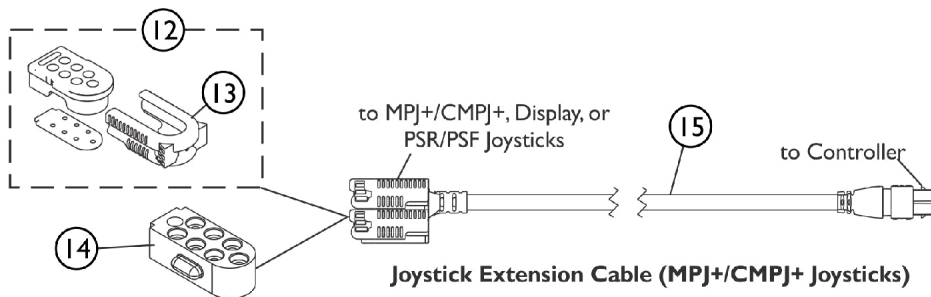
SHEP_150A



Monoport "Y" Phono Cable (MPY)



Egg Switch (EGSBLK)



Joystick Extension Cable (MPJ+/CMPJ+ Joysticks)

Joystick and Joystick Cables

CMPJ+ (CMPJM6) S/N D16213304-D16213602, S/N H16146144 and After

Item Number	Note	Part Number	Description	Quantity Per	
				Package	Assembly
1	A	1164361	Joystick, Color Display, CMPJ+ (CMPJM6)	1	1
1	A	1164361E-NLA	NLA - WARR RPLMT - Joystick, Color Display, CMPJ+ (CMPJM6)	1	1
2		1188691	Knob, Joystick Rubber, Black	1	1
3		1188692	Skirt, Joystick Rubber, Black	1	1
4		1186444	Knob, Speed Adjustment, Black	1	1
5		1186439	Knob, Power/Drive Select, Black	1	1
6		1194475	Kit, SD Card Slot Cover	1	1
7			Cover, Slot Card SD	1	1
8			Screw, Phillips Pan Head (M3 x 8)	1	2
9			O-Ring, SD Card Slot	1	1
10		1140027	Cable, Monoport "Y" Phono (MPY)	1	1
11		1123276	Kit, Switch, Black Egg Reset w/ Hook/Loop Adhesive Back Fastener & Attaching Screws (EGSBLK)	1	1
12	B	1133182	Cap, Top Connector, 7 Pin, Black	1	1
13	G	1145408-NLA	NLA - Latch, Top Connector, Black	1	1
14		1133183-NLA	NLA - Cap, Bottom Connector, 7 Pin	1	1
15	D	1140038-NLA	NLA - Cable, MK6i Joystick Extension, (PWH) (34" L)	1	1
15	E	1133180	Cable, MK6i Joystick Extension, (PWH) (16" L)	1	1
15	F,F1	1140039-NLA	NLA - Cable, MK6i Joystick Extension, (PWH) (58" L)	1	1
	C	1006270	Extension, Joystick, "T" Style (1560) (4" W x 5-1/2" L)	1	1
	C	1006271	Extension, Joystick, Straight Style (1561) (1/2" W x 5" L)	1	1

NOTE: A - Includes items 2-6 also.
 B - Includes Main Body, Gasket, and Latch. Latch is the only item offered individually.
 C - Not Shown
 D - Used on Non-Elevate 3G Storm Series wheelchairs Before 12/10/07.
 E - Used on all wheelchairs with multi-purpose joystick (MPJ/CMPJ) (excluding Note D) and WithOut any of the following: Any power seating; LNX/ELRPW power leg options; or any of the electronics in F1. It is used with MPCTMT and conventional actuators.
 F - Used on all wheelchairs with multi-purpose joystick (MPJ/CMPJ) and With any of the following: Any power seating option; LNX/ELRPW power leg options; or With any of the electronics in F1
 F1 - SNPM6, 5018M6, 5020M6, 1558M6, PACM6, 4WSB, S4WSB, AUX12M6, AUX34M6, RFM, IR, SANODE, ELRPW, ELRPW22, LNX, LNX-L. Also used on all Formula seating SMTACT and MPCTMT.
 G - Item 13 part #1145408 is No Longer Available separately, order item 12 part #1133182