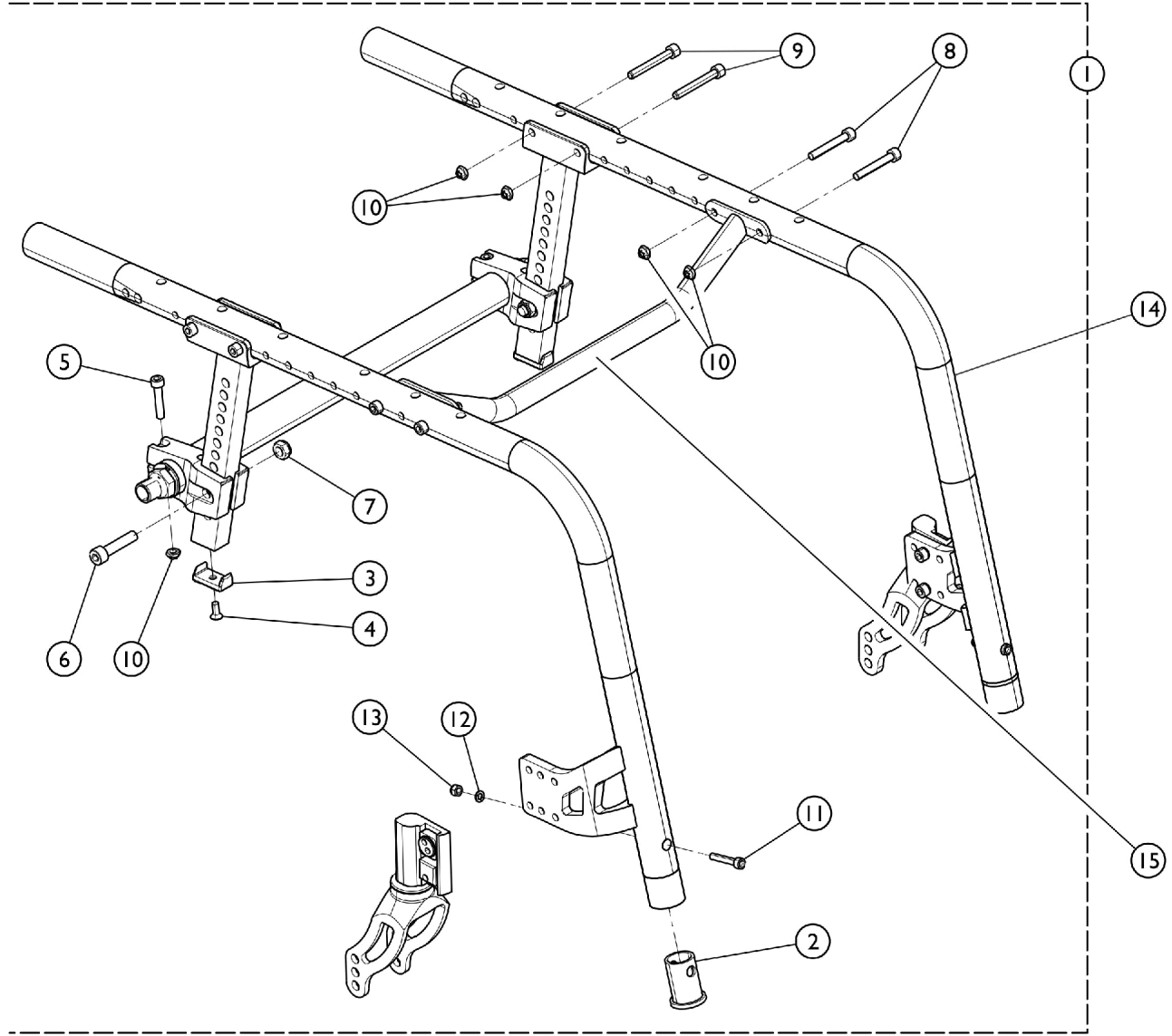


# Frames - Side w/ Hardware



SCM\_212A

## Frames - Side w/ Hardware

Item Number	Note	Part Number	Description	Quantity Per	
				Package	Assembly
1	A	1180305	Kit, Hardware, Frame, Reveal	1	1
2			Spacer, Footrest	1	2
3			Bumper, Seat Support	1	2
4			NLA - Screw, Socket Flat Head (#10-32 x 1/2")	1	2
5			NLA - Screw, Socket Head (M6 x 30mm)	1	2
6			Screw, Socket Head (M8 x 1.25 x 30mm)	1	2
7			NLA - Locknut (M8 x 1.25)	1	2
8			NLA - Screw, Socket Head Cap (M6 x 1 x 40mm)	1	4
9			Screw (M6 x 1 x 45mm)	1	4
10			NLA - Locknut (M6 x 1)	1	10
11			Screw, Socket Head, Cap (M5 x .8 x 30mm)	1	2
12			Washer, Locking Split (#10)	1	2
13			Nut, Lock (M5 x .8)	1	2
14		See Chart	Item #14 - Side Frame Assembly	1	1
15		See Chart	Item #15 - Rigidizer Bar	1	1

NOTE: A - Includes items 2 - 13.

### Item #14 - Side Frame Assembly

Frame Angle	Caster Size	Fork Style	Right	Left
75 Degree	4 in.	STD or FLOSF	8881172595-NLA	8881172596-NLA
75 Degree Tapered	4 in.	STD or FLOSF	8881184043-NLA	8881184044-NLA
75 Degree	5 in.	FLOSF	8881179050	8881179051-NLA
75 Degree Tapered	5 in.	FLOSF	8881184053	8881184054
75 Degree	6 in.	STD	8881179053-NLA	8881179054-NLA
75 Degree Tapered	6 in.	STD	8881184061-NLA	8881184062-NLA
85 Degree Tapered	4 in.	STD or FLOSF	8881184049-NLA	8881184050-NLA
85 Degree	4 in.	STD or FLOSF	8881172613-NLA	8881172614-NLA
85 Degree	5 in.	FLOSF	8881179059-NLA	8881179060-NLA
85 Degree Tapered	5 in.	FLOSF	8881184057	8881184058
85 Degree	6 in.	STD	8881179056-NLA	8881179057-NLA
85 Degree Tapered	6 in.	STD	8881184065-NLA	8881184066-NLA

STD Fork Style based on the Forks used on a T7A Crossfire Wheelchair. See Category "Forks w/ Hardware" as a reference.

# Frames - Side w/ Hardware

## Item #15 - Rigidizer Bar

Description	Part Number
Rigidizer Bar (12 in.)	1172570
Rigidizer Bar (13 in.)	1172571
Rigidizer Bar (14 in.)	1172572
Rigidizer Bar (15 in.)	1172573
Rigidizer Bar (16 in.)	1172574
Rigidizer Bar (17 in.)	1172575
Rigidizer Bar (18 in.)	1172576
Rigidizer Bar (19 in.)	1172577
Rigidizer Bar (20 in.)	1172578