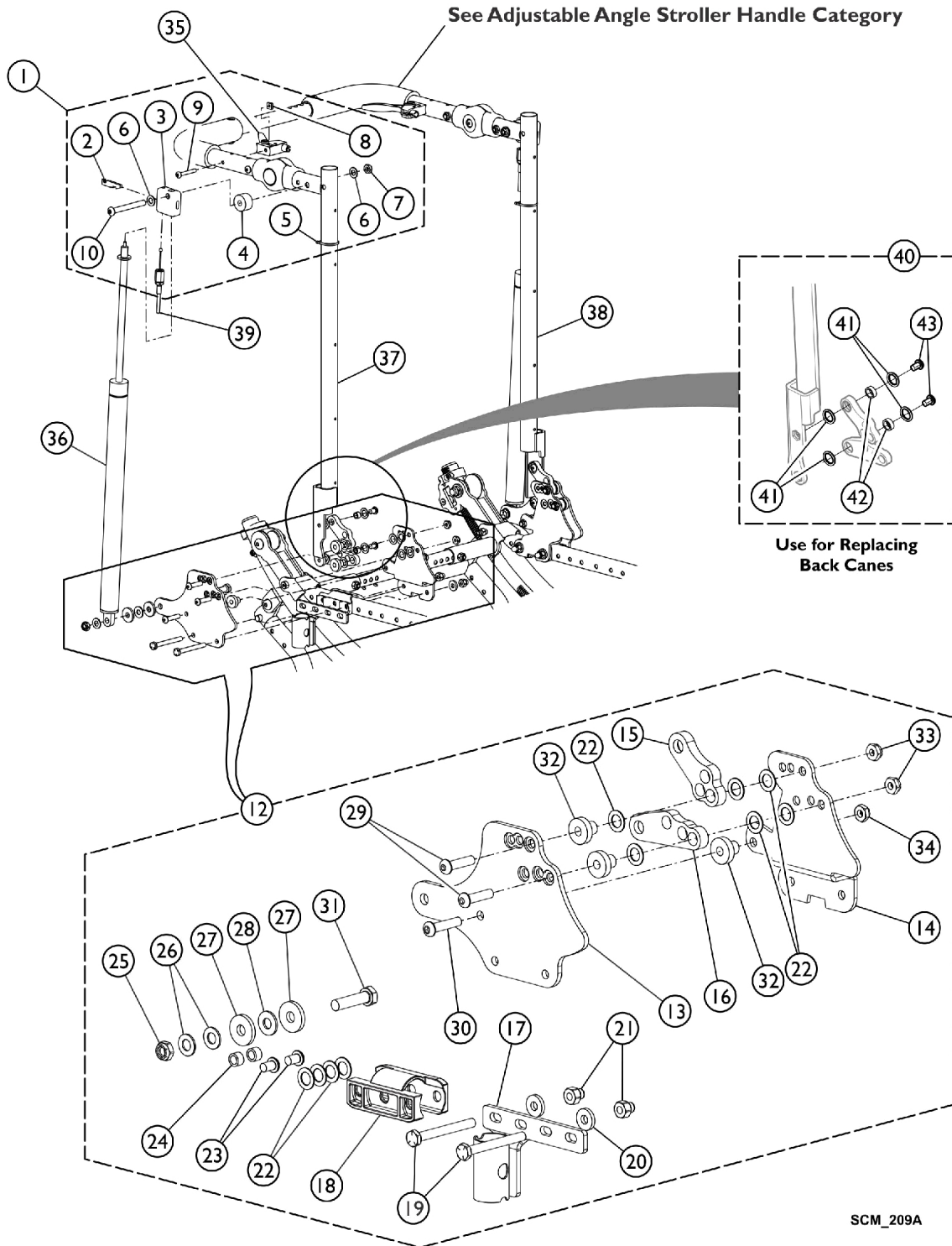


Reclining Back Hardware (LOSHEAR) Option (Before 8/21/15)

Two Point Arms (Except FADJDESK and FADJFULL)

Manual Recliner uses "Stroller Handle - Adjustable Angle - Outside Mount (AASH),
see this category for more information.



Reclining Back Hardware (LOSHEAR) Option (Before 8/21/15)

Two Point Arms (Except FADJDESK and FADJFULL)

Manual Recliner uses "Stroller Handle - Adjustable Angle - Outside Mount (AASH),
see this category for more information.

Item Number	Note	Part Number	Description	Quantity Per	
				Package	Assembly
1	A	1170571	Kit, Hardware, Cylinder Cable Release	1	1
2			Lever, Cylinder Release	1	1
3			Bracket, Cylinder Release, Black	1	1
4			Bushing (5/16 x 1")	1	1
5			Tie Wrap (3-29/32" L)	1	1
6			Locknut (5/16-24)	1	1
7			Washer, Steel (21/64 x 5/8 x 3/64")	1	2
8			Nut, Square (#10-32)	1	1
9			NLA - Screw, Socket Button Head (5/16-24 x 1-3/4")	1	1
10			Screw, Phillip Pan Head (10-32 x 1-3/8")	1	1
12	B,F	1170575-NLA	NLA - Kit, Hardware, Two Point Arms, Reclining Back - Right	1	1
13			Plate, Outer - Right	1	1
14			Plate, Inner - Right	1	1
15			Link, Upper, Reclining Back - Right	1	1
16			Link, Lower, Reclining Back - Right	1	1
17			Arm Cup Assembly, Rear - Right	1	1
18			Universal Washer	1	1
19			Screw, Hex Head (1/4-28 x 2-1/4")	1	2
20			Washer (1/4 x 5/8 x 3/32")	1	2
21			Nut, Hex Nylon (1/4-28)	1	2
22			Washer, Nylon (3/8 x 5/8 x 1/32")	1	10
23			Screw, Button Head, Socket, Cap (1/4-28 x 3/8")	1	2
24			Bushing, Articulation	1	2
25			Locknut (5/16-18)	1	1
26			Washer, Steel (21/64 x 5/8 x 3/64")	1	2
27			Washer, Nylon (5/16 x 7/8 x 1/8")	1	2
28			Washer, Nylon (5/16 x 11/16 x 1/16")	1	1
29			Screw, Button Head, Socket, Cap (1/4-28 x 1")	1	2
30			Screw, Socket Button Head (1/4-28 x 1-1/8")	1	1
31			Screw, Hex Head w/ Patch (5/16-18 x 1-1/4")	1	1
32			Bushing, Pivot	1	3
33			Locknut, Thin (1/4-28)	1	2
34			Locknut (1/4-28)	1	1
12	B,F	1170576-NLA	NLA - Kit, Hardware, Two Point Arms, Reclining Back - Left	1	1
13			Plate, Outer - Left	1	1
14			Plate, Inner - Left	1	1
15			Link, Upper, Reclining Back - Left	1	1
16			Link, Lower, Reclining Back - Left	1	1
17			Arm Cup Assembly, Rear - Left	1	1
18			Universal Washer	1	1
19			Screw, Hex Head (1/4-28 x 2-1/4")	1	2

Reclining Back Hardware (LOSHEAR) Option (Before 8/21/15)

Two Point Arms (Except FADJDESK and FADJFULL)

Manual Recliner uses "Stroller Handle - Adjustable Angle - Outside Mount (AASH),
see this category for more information.

Item Number	Note	Part Number	Description	Quantity Per	
				Package	Assembly
20			Washer (1/4 x 5/8 x 3/32")	1	2
21			Nut, Hex Nylon (1/4-28)	1	2
22			Washer, Nylon (3/8 x 5/8 x 1/32")	1	10
23			Screw, Button Head, Socket, Cap (1/4-28 x 3/8")	1	2
24			Bushing, Articulation	1	2
25			Locknut (5/16-18)	1	1
26			Washer, Steel (21/64 x 5/8 x 3/64")	1	2
27			Washer, Nylon (5/16 x 7/8 x 1/8")	1	2
28			Washer, Nylon (5/16 x 11/16 x 1/16")	1	1
29			Screw, Button Head, Socket, Cap (1/4-28 x 1")	1	2
30			Screw, Socket Button Head (1/4-28 x 1-1/8")	1	1
31			Screw, Hex Head w/ Patch (5/16-18 x 1-1/4")	1	1
32			Bushing, Pivot	1	3
33			Locknut, Thin (1/4-28)	1	2
34			Locknut (1/4-28)	1	1
35		1078318	Handle, Cable Release, Black	1	2
36		1190021	Cylinder, Gas, Recliner	1	2
37	F	1170530-NLA	NLA - Cane, Back, Recliner w/ Upholstery, Black - Right	1	1
38	F	1170531-NLA	NLA - Cane, Back, Recliner w/ Upholstery, Black - Left	1	1
39		1082638	Cable Release Assembly	1	2
40	E	1192514	Kit, Hardware, Loshear Reclining Back	1	1
41			Washer, Nylon (3/8 x 5/8 x 1/32")	1	8
42			Bushing, Articulation	1	4
43			Screw, Button Head, Socket, Cap (1/4-28 x 3/8")	1	4
			Loctite 271, 5 ML	1	1
			Instruction Sheet, Low Shear Back Cane Mounting Hardware	1	1
	C,D	1134425	Package, Plug Button, Black (1")	10	1
	D	1070998	Headrest Extension Tube Assembly, Black - Right	1	1
	D	1070999	Headrest Extension Tube Assembly, Black - Left	1	1

NOTE: A - Includes items 2 - 10.
 B - Includes items 13 - 34. 1170575 and 1170576 is NLA.
 C - Plug Buttons are not used when Headrest Extension Tubes are used.
 D - Not shown in illustration.
 E - Includes Loctite 271, Instruction Sheet, and Items 41, 42, and 43. Use when replacing Back Canes only.
 F - No Longer Available. Please see category "Recliner - Retro-Fit Kit w/ Upholstery" for replacement Back Canes or Reclining Back Hardware.