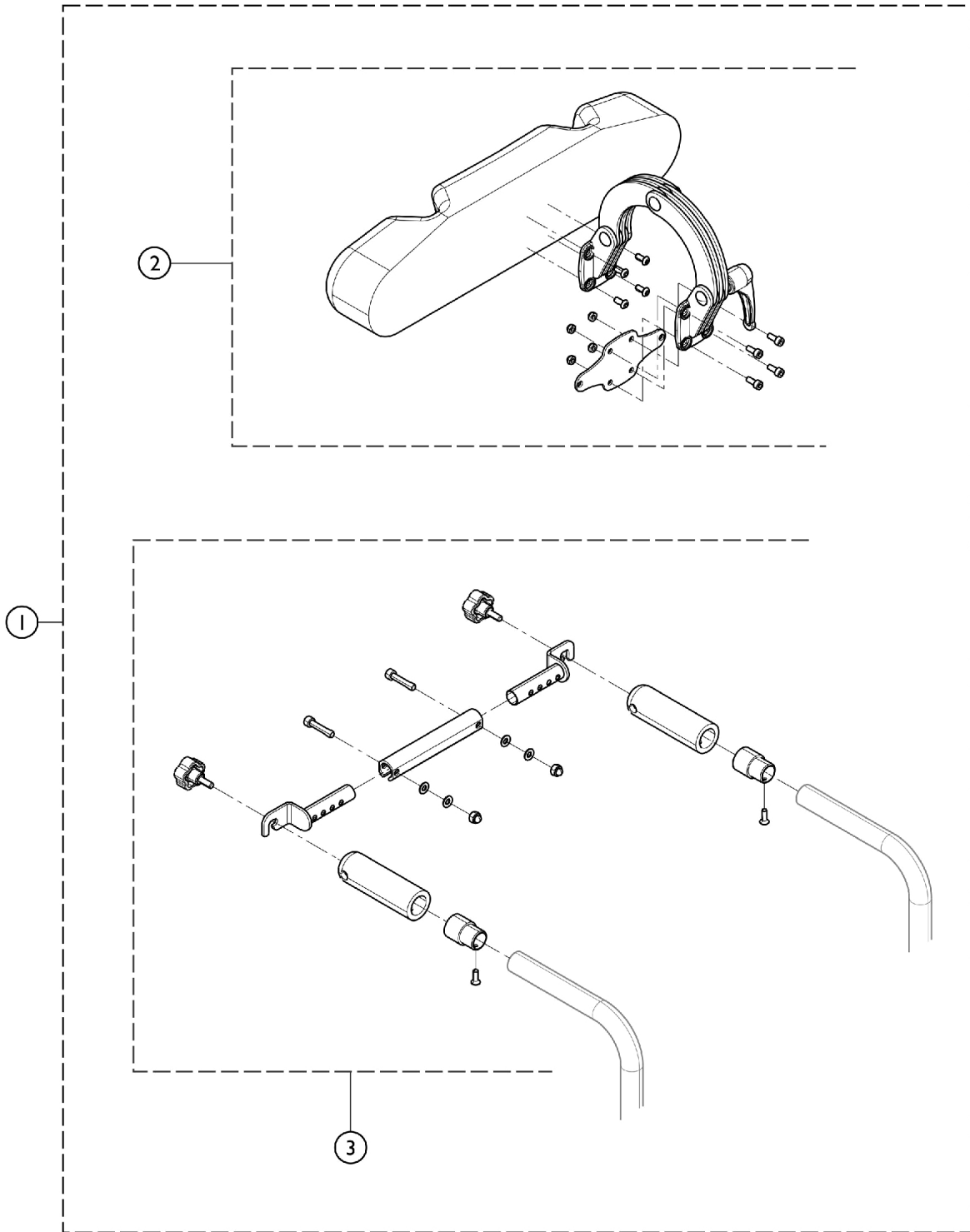


Headrest and Backbrace



Headrest and Backbrace

| Item Number | Note | Part Number | Description | Quantity Per | |
|-------------|------|-------------|---|--------------|----------|
| | | | | Package | Assembly |
| 1 | | 1192337 | Kit, Headrest and Backbrace, Seat (8 - 11", 1" Back Canes) | 1 | 1 |
| 2 | | | Headrest Assembly | 1 | 1 |
| 3 | | | Backbrace Assembly, TLSCP 205-280 | 1 | 1 |
| | | | Instruction Sheet, Service, Myon | 1 | 1 |
| 1 | | 1192338 | Kit, Headrest and Backbrace, Seat (8 - 11", 7/8" Back Canes) | 1 | 1 |
| 2 | | | Headrest Assembly | 1 | 1 |
| 3 | | | Backbrace Assembly, TLSCP 205-280 | 1 | 1 |
| | | | Instruction Sheet, Service, Myon | 1 | 1 |
| 1 | | 1192339 | Kit, Headrest and Backbrace, Seat (12 - 15", 1" Back Canes) | 1 | 1 |
| 2 | | | Headrest Assembly | 1 | 1 |
| 3 | | | Backbrace Assembly, TLSCP 205-280 | 1 | 1 |
| | | | Instruction Sheet, Service, Myon | 1 | 1 |
| 1 | | 1192340 | Kit, Headrest and Backbrace, Seat (12 - 15", 7/8" Back Canes) | 1 | 1 |
| 2 | | | Headrest Assembly | 1 | 1 |
| 3 | | | Backbrace Assembly, TLSCP 205-280 | 1 | 1 |
| | | | Instruction Sheet, Service, Myon | 1 | 1 |

Headrest and Backbrace - Where Used

| Back Type | Part Number |
|--|-------------|
| ABH1216PH, ABH1519PH ABH1620PH, AABH1216 AABH1519, AABH1620 ABH1216, ABH1519, ABH1620 | 1192337 |
| FBH16, FBH20, FBH16F, FBH20F | 1192338 |
| ABH1216PH, ABH1519PH ABH1620PH, AABH1216 AABH1519, AABH1620 ABH1216, ABH1519, ABH1620 | 1192339 |
| FBH16, FBH20, FBH16F, FBH20F | 1192340 |