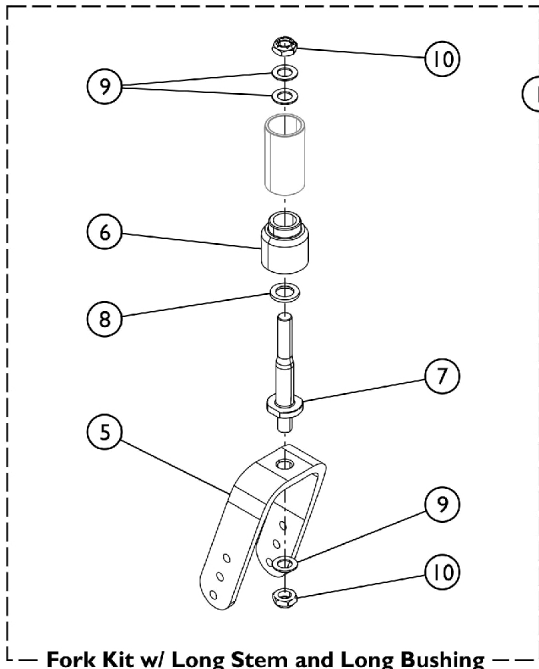


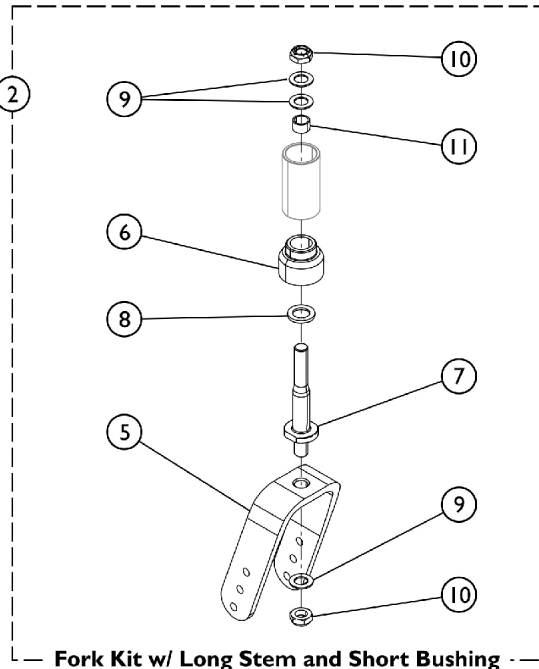
# Fork Assembly (Option 1259, 81DC, 815DC)

When ordering replacement forks, you must also order the Caster Mounting Hardware, see Category "Caster - Front - Mounting Hardware (Option 81DC, 815DC) or Category "Casters - Front and Mounting Hardware (After 6/29/11) or (Before 7/01/11) for Service Parts.

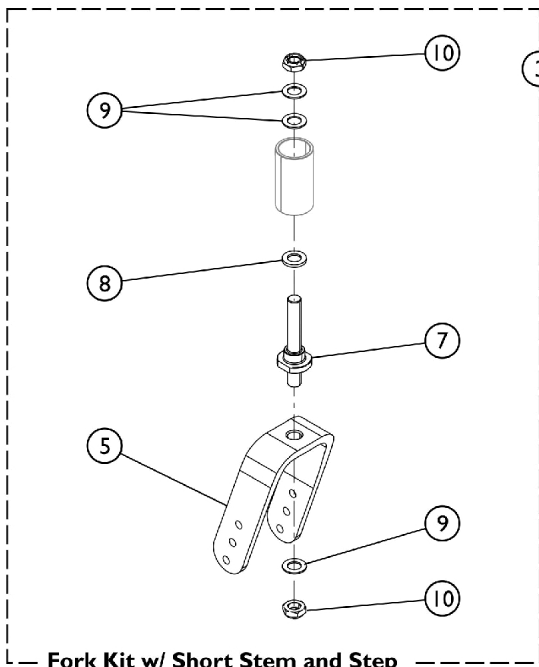
For what Fork to use with which chair, please see chart "Fork Assembly - When to Use" for correct Part Numbers.



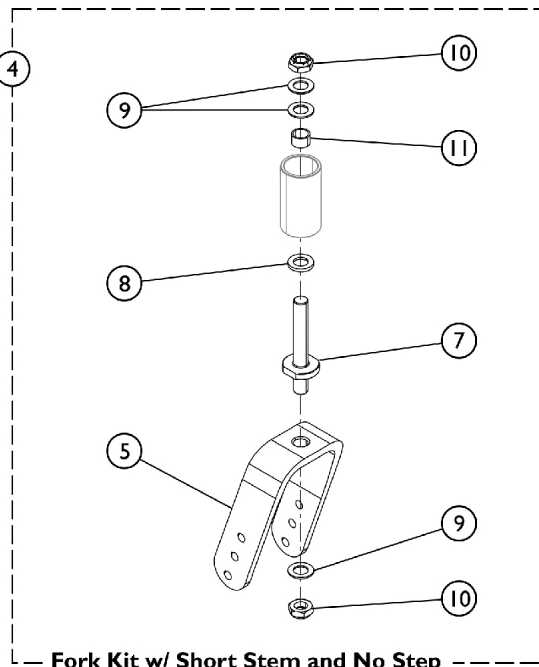
**Fork Kit w/ Long Stem and Long Bushing**  
**1259 Option (16, 17, 18" STF)**  
**81DC, 815DC Option (18, 19" STF)**



**Fork Kit w/ Long Stem and Short Bushing**  
**1259 Option (15-1/2, 16-1/2, 17-1/2" STF)**  
**81DC, 815DC Option (17-1/2, 18-1/2" STF)**



**Fork Kit w/ Short Stem and Step**  
**1259 Option (15", 16", 17" STF)**  
**81DC, 815DC Option (17", 18" STF)**



**Fork Kit w/ Short Stem and No Step**  
**1259 Option (14-1/2", 15-1/2", 16-1/2" STF)**  
**81DC, 815DC Option (16-1/2", 17-1/2" STF)**

# Fork Assembly (Option 1259, 81DC, 815DC)

When ordering replacement forks, you must also order the Caster Mounting Hardware, see Category "Caster - Front - Mounting Hardware (Option 81DC, 815DC) or Category "Casters - Front and Mounting Hardware (After 6/29/11) or (Before 7/01/11) for Service Parts.

For what Fork to use with which chair, please see chart "Fork Assembly - When to Use" for correct Part Numbers.

Item Number	Note	Part Number	Description	Quantity Per	
				Package	Assembly
		See Chart	Fork Assembly - For 8" Casters - Where used	1	1
1	A	1192508	Kit, Fork w/ Long Stem - Long Bushing (1259)	1	1
5			Fork, Caster	1	1
6			Bushing and Bearing Assembly, Long	1	1
7			Stem, Fork	1	1
8			Washer (1 x 1/16 x 1/8")	1	1
9			Washer, Plain (1/2 x 7/8 x 1/16)	1	3
10			Locknut (1/2-20)	1	2
			Instruction Sheet, Fork Replacement	1	1
1	A	1192509	Kit, Fork w/ Long Stem - Long Bushing (81DC, 815DC)	1	1
5			Fork, Caster, Black	1	1
6			Bushing and Bearing Assembly, Long	1	1
7			Stem, Fork	1	1
8			Washer (1 x 1/16 x 1/8")	1	1
9			Washer, Plain (1/2 x 7/8 x 1/16)	1	2
10			Locknut (1/2-20)	1	3
			Instruction Sheet, Fork Replacement	1	1
2	B	1192506	Kit, Fork w/ Long Stem - Short Bushing (1259)	1	1
5			Fork, Caster	1	1
6			Bushing Stem and Bearing, Short	1	1
7			Stem, Fork	1	1
8			Washer (1 x 1/16 x 1/8")	1	1
9			Washer, Plain (1/2 x 7/8 x 1/16)	1	3
10			Locknut (1/2-20)	1	2
11			Spacer (1/2 x 5/8 x 3/8")	1	1
			Instruction Sheet, Fork Replacement	1	1
2	B	1192507	Kit, Fork w/ Long Stem - Short Bushing (81DC, 815DC)	1	1
5			Fork, Caster, Black	1	1
6			Bushing Stem and Bearing, Short	1	1
7			Stem, Fork	1	1
8			Washer (1 x 1/16 x 1/8")	1	1
9			Washer, Plain (1/2 x 7/8 x 1/16)	1	3
10			Locknut (1/2-20)	1	2
11			Spacer (1/2 x 5/8 x 3/8")	1	1
			Instruction Sheet, Fork Replacement	1	1
3	C	1192575	Kit, Fork, Short Stem w/ Step (Option 1259 Caster)	1	1
5			Fork, Caster	1	1
7			Stem, Fork, Short (w/ Step)	1	1
8			Spacer (.255 x .438 x .11)	1	1
9			Washer, Plain (1/2 x 7/8 x 1/16)	1	3

## Fork Assembly (Option 1259, 81DC, 815DC)

When ordering replacement forks, you must also order the Caster Mounting Hardware, see Category "Caster - Front - Mounting Hardware (Option 81DC, 815DC) or Category "Casters - Front and Mounting Hardware (After 6/29/11) or (Before 7/01/11) for Service Parts.

For what Fork to use with which chair, please see chart "Fork Assembly - When to Use" for correct Part Numbers.

Item Number	Note	Part Number	Description	Quantity Per	
				Package	Assembly
10			Locknut (1/2-20)	1	2
3	C	1192576	Kit, Fork, Short Stem w/ Step (Option 81DC, 815DC)	1	1
5			Stem, Fork, Short (w/ Step)	1	1
7			Fork, Caster, Black	1	1
8			Spacer (.255 x .438 x .11)	1	1
9			Washer, Plain (1/2 x 7/8 x 1/16)	1	3
10			Locknut (1/2-20)	1	2
4	D	1192577	Kit, Fork, Short Stem w/o Step (Option 1259)	1	1
5			Fork, Caster	1	1
7			Stem, Fork, Short (w/o Step)	1	1
8			Spacer (1/2 x 5/8 x 3/8")	1	1
9			Washer, Plain (1/2 x 7/8 x 1/16)	1	3
10			Locknut (1/2-20)	1	2
11			Spacer (.255 x .438 x .11)	1	1
4	D	1192578	Kit, Fork, Short Stem w/o Step (Option 81DC, 815DC)	1	1
5			Fork, Caster, Black	1	1
7			Stem, Fork, Short (w/o Step)	1	1
8			Spacer (1/2 x 5/8 x 3/8")	1	1
9			Washer, Plain (1/2 x 7/8 x 1/16)	1	3
10			Locknut (1/2-20)	1	2
11			Spacer (.255 x .438 x .11)	1	1
	E	1088523	Plug Button, Head Tube, Black	1	1

NOTE: A - Kit includes items 5, 6, 7, 8, 9, and 10.  
 B - Kit includes items 5, 6, 7, 8, 9, 10, and 11.  
 C - Kit includes items 5, 7, 8, 9, 10.  
 D - Kit includes items 5, 7, 8, 9, 10, 11.  
 E - Not shown in illustration.

When ordering replacement forks, you must also order the Caster Mounting Hardware, see Category "Caster - Front - Mounting Hardware (Option 81DC, 815DC) or Category "Casters - Front and Mounting Hardware (After 6/29/11) or (Before 7/01/11) for Service Parts.

For when to use each Fork, please see "Fork Assembly - When to Use" chart.

### Fork Kit - Where Used

Caster Option	Bushing and Stem Length	Rear Wheel Size	Seat to Floor Height	Part Number
---------------	-------------------------	-----------------	----------------------	-------------

## Fork Assembly (Option 1259, 81DC, 815DC)

When ordering replacement forks, you must also order the Caster Mounting Hardware, see Category "Caster - Front - Mounting Hardware (Option 81DC, 815DC) or Category "Casters - Front and Mounting Hardware (After 6/29/11) or (Before 7/01/11) for Service Parts.

For what Fork to use with which chair, please see chart "Fork Assembly - When to Use" for correct Part Numbers.

### Fork Kit - Where Used

Caster Option	Bushing and Stem Length	Rear Wheel Size	Seat to Floor Height	Part Number
1259	Long Stem Short Bushing	12COM (Pneumatic and Flat Free) 16COM 20COM 22COM 24COM7	15-1/2", 16-1/2", 17-1/2"	1192506
1259	Long Stem Long Bushing	12COM (Pneumatic and Flat Free) 16COM 18COM 20COM 22COM 24COM7	16", 17", 18"	1192508
1259	Short Stem w/ Step	12COM (Urethane Only) 16COM 18COM 20COM	15", 16", 17"	1192575
1259	Short Stem w/ No Step	12COM (Urethane Wheels) 16COM 18COM 20COM	14-1/2", 15-1/2", 16-1/2"	1192577
81DC, 815DC	Long Stem Short Bushing	16COM 18COM 22COM 24COM7	18-1/2"	1192507
81DC, 815DC	Long Stem Long Bushing	16COM 18COM 22COM 24COM7	18", 19"	1192509
81DC, 815DC	Short Stem w/ Step	12COM	17", 18"	1192576
81DC, 815DC	Short Stem w/ Step	16COM 20COM 22COM 24COM7	17"	1192576
81DC, 815DC	Short Stem w/ No Step	12COM 20COM 22COM 24COM7	16-1/2", 17-1/2"	1192578
81DC, 815DC	Short Stem w/ No Step	16COM	17-1/2"	1192578

## **Fork Assembly (Option 1259, 81DC, 815DC)**

**When ordering replacement forks, you must also order the Caster Mounting Hardware, see Category "Caster - Front - Mounting Hardware (Option 81DC, 815DC) or Category "Casters - Front and Mounting Hardware (After 6/29/11) or (Before 7/01/11) for Service Parts.**

**For what Fork to use with which chair, please see chart "Fork Assembly - When to Use" for correct Part Numbers.**

---