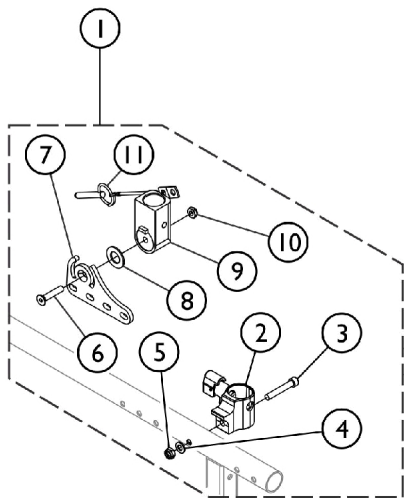


# Flip Back Arm Attaching Hardware

Please see Categories for "Reclining Back Hardware" for Arm Attaching Hardware.

Parts Shown in Illustration are for the Left Side of the Chair



Parts for these kits are specific to the Right and Left Sides of the Chair, however, **Item 7, Flip Bracket** may be reversed in some configurations. See below explanations and the chart on the parts list.

**SDR1519** and Seat Depth is **D16, D17, D18, and D19.**

**SDR1822** and Seat Depth is **D19, D20, D21, and D22.**

\*Left Side = Left Side Kit and Right Side = Right Side Kit

Use **Opposite Side Kit (Right or Left)** on the side of the chair when:

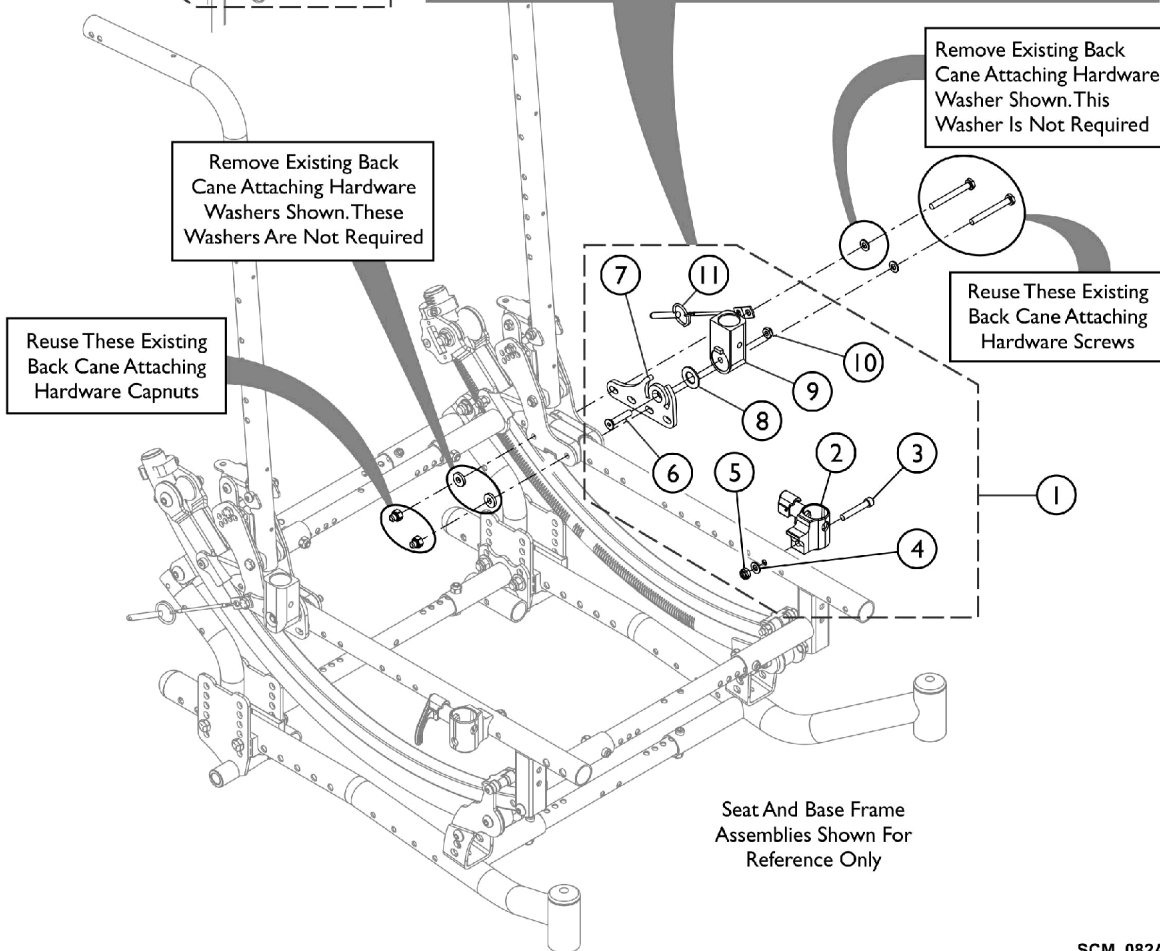
**SDR1216** and Seat Depth is **D15 or D16.**

**SDR1519** and Seat Depth is **D15.**

**SDR1822** and Seat Depth is **D18.**

\*Right Side = Left Side Kit and Left Side = Right Side Kit

\* In cases where the **Opposite Side Kit** (for Item No. 7, Bracket) is needed, and Item No. 2, Arm Socket is also needed you must order both Side Kits to get all the correct parts.



Remove Existing Back Cane Attaching Hardware Washer Shown. This Washer Is Not Required

Remove Existing Back Cane Attaching Hardware Washers Shown. These Washers Are Not Required

Reuse These Existing Back Cane Attaching Hardware Capnuts

Reuse These Existing Back Cane Attaching Hardware Screws

Seat And Base Frame Assemblies Shown For Reference Only

# Flip Back Arm Attaching Hardware

Please see Categories for "Reclining Back Hardware" for Arm Attaching Hardware.

Item Number	Note	Part Number	Description	Quantity Per	
				Package	Assembly
1 2 3 4 5 6 7 8 9 10 11	A,B	See Chart 1164106	Flip Back Hardware - When to Use	1	1
			Kit, Arm Attaching Hardware, Flip Back - Right	1	1
			Arm Socket Assembly, Black - Right	1	1
			NLA - Screw, Socket Head (1/4-28 x 1-1/2")	1	1
			NLA - Washer, Steel (1/4 x 1/2 x 3/64")	1	1
			Locknut (1/4-28)	1	1
			Screw, Socket Flat Head (1/4-20 x 1-1/4")	1	1
			Bracket, Flip Back Arm, Black - Right	1	1
			NLA - Washer, Nylon (35/64 x 1 x 1/16")	1	1
			Bracket, Cup, Flip Back Arm, Black	1	1
			Locknut, Thin (1/4-20)	1	1
1 2 3 4 5 6 7 8 9 10 11	A,B	1164107	Faspin, Lanyard .25 w/ 4"	1	1
			Kit, Arm Attaching Hardware, Flip Back - Left	1	1
			Arm Socket Assembly, Black - Left	1	1
			NLA - Screw, Socket Head (1/4-28 x 1-1/2")	1	1
			NLA - Washer, Steel (1/4 x 1/2 x 3/64")	1	1
			Locknut (1/4-28)	1	1
			Screw, Socket Flat Head (1/4-20 x 1-1/4")	1	1
			Bracket, Flip Back Arm, Black - Left	1	1
			NLA - Washer, Nylon (35/64 x 1 x 1/16")	1	1
			Bracket, Cup, Flip Back Arm, Black	1	1
			Locknut, Thin (1/4-20)	1	1
Faspin, Lanyard .25 w/ 4"	1	1			

NOTE: A - Includes items 2 - 11.  
B - In case where the Opposite Side Kit for Item. 7, Flip Bracket is needed and Item 2, Arm Socket is needed, you must order both side kits to get all the correct parts.

## Flip Back Hardware - When to Use

Seat Depth Range	Seat Depth	Right Side Kit Part Number	Left Side Kit Part Number
Same Side Kits			
SDR1519	D16, D17 D18, D19	1164106	1164107
SDR1822	D19, D20 D21, D22	1164106	1164107
Opposite Side Kits			
SDR1216	D15, D16	1164107	1164106
SDR1519	D15	1164107	1164106
SDR1822	D18	1164107	1164106

In case where the Opposite Side Kit is needed and Item 2, Arm Socket is needed, you must order both Side Kits to get all the correct parts.